

STAPLE FOOD CROPS

A. Cereals

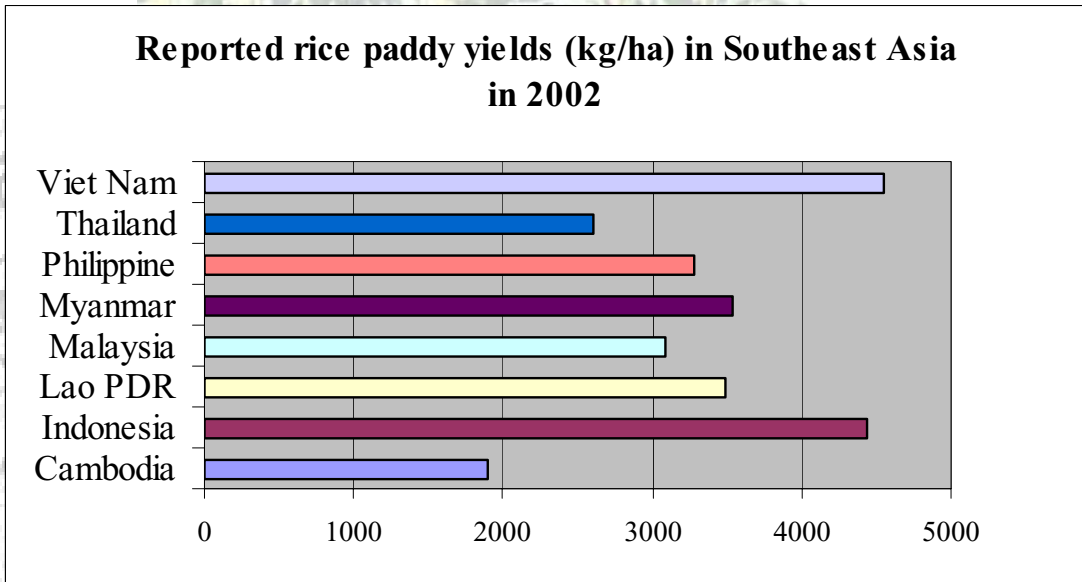


Table 12. Rice paddy : production

Unit: 1000 MT

Country	1992	1999	2000	2001	2002	Annual Growth Rate 1992 - 2002
DEVELOPING COUNTRIES						
SOUTHEAST ASIA						
1 . Cambodia	2 221.0	4 040.9	4 026.1	4 099.0	3 740.0	6.5 %
2 . Indonesia	48 240.0	50 866.4	51 898.0	50 460.8	51 603.8	0.8 %
3 . Lao PDR	1 502.4	2 102.8	2 201.7	2 334.5	2 410.0 *	6.4 %
4 . Malaysia	2 012.7	2 036.6	2 140.8	2 094.0	2 091.0	-0.1 %
5 . Myanmar	14 840.4	20 126.0	21 323.9	21 900.0 *	21 900.0 *	3 %
6 . Philippines	9 513.0	11 786.6	12 389.4	12 954.9	13 270.7	3.1 %
7 . Thailand	19 917.0	24 172.0	25 608.0	26 954.1	25 945.0 *	3.4 %
8 . Viet Nam	21 590.3	31 393.8	32 529.5	31 970.1	34 063.5	4.8 %
SOUTH ASIA						
9 . Bangladesh	27 510.4	34 600.5	37 627.5	36 269.0	38 134.0 *	4.3 %
10 . Bhutan	43.0 F	50.0 F	50.0 F	50.0 F	44.3	1.0 %
11 . India	109 001.2	134 496.3	131 614.1	139 735.0	116 580.0	1.4 %
12 . Maldives						
13 . Nepal	2 584.9	3 834.3	4 216.5	4 164.7	4 130.0 *	4 %
14 . Pakistan	4 674.2	7 733.4	7 203.9	5 823.0	6 343.0 *	2.8 %
15 . Sri Lanka	2 339.7	2 857.1	2 859.9	2 694.5	2 794.0 *	1.4 %
CENTRAL ASIA						
16 . Kazakhstan	467.0	199.3	214.3	198.7	199.1	-6.8 %
17 . Tajikistan	20.2	47.3	82.0	39.8	29.0 *	9.8 %
18 . Uzbekistan	538.9	420.8	154.8	67.8	143.1	-15.3 %
OTHER ASIA						
19 . China	188 291.9	200 403.3	189 814.1	179 304.9	176 553.0	0.0 %
20 . Korea DPR	4 500.0	2 343.0	1 690.0	2 060.2	2 190.0	-7.1 %
21 . Iran (Islamic Rep. of)	2 360.1	2 348.2	1 971.5	1 990.2	2 115.0 *	-1.3 %
22 . Mongolia						
23 . Korea Republic of	7 303.0	7 032.8	7 124.8	7 453.0	6 650.0 *	0 %
PACIFIC ISLANDS						
24 . Cook Islands						
25 . Fiji Islands	22.5	17.3	13.2	14.6	14.7 F	-5.4 %
26 . Kiribati						
27 . Marshall Islands						
28 . Nauru						
29 . Niue						
30 . Palau						
31 . Papua New Guinea	0.6 *	0.7 *	0.7 *	0.8 F	0.8 F	2.2 %
32 . Samoa						
33 . Solomon Islands	0.0 F	4.5 *	4.8 F	5.2 F	5.2 F	33.9 %
34 . Tonga						
35 . Vanuatu						
SUB-TOTAL	469 494.4	542 914.0	536 759.2	532 638.8	510 949.1	1.4 %
DEVELOPED COUNTRIES						
36 . Australia	957.0	1 389.8	1 100.7	1 643.0	1 275.0	4.8 %
37 . Japan	13 216.0	11 468.8	11 863.0	11 320.0	11 111.0	-1.3 %
38 . New Zealand						
SUB-TOTAL	14 173.0	12 858.6	12 963.7	12 963.0	12 386.0	-0.8 %
ASIA & PACIFIC*	483 667.4	555 772.6	549 722.9	545 601.8	523 335.1	1.3 %
REST OF WORLD	44 546.8	55 510.3	52 881.9	52 185.4	52 945.0	2.1 %
WORLD	528 214.2	611 282.9	602 604.9	597 787.2	576 280.1	1.4 %

Table 13. Rice paddy : yield

Unit: kg/ha

Country	1992	1999	2000	2001	2002	Annual Growth Rate 1992 - 2002
DEVELOPING COUNTRIES						
SOUTHEAST ASIA						
1 . Cambodia	1 317.8	1 943.3	2 115.5	2 069.9	1 902.4	4.5 %
2 . Indonesia	4 344.7	4 251.9	4 400.8	4 387.9	4 432.8	0.1 %
3 . Lao PDR	2 655.5	2 930.4	3 060.6	3 126.1	3 492.8	3.2 %
4 . Malaysia	2 991.8	2 941.5	3 062.2	3 139.4	3 090.0	0.0 %
5 . Myanmar	2 935.1	3 240.5	3 383.4	3 532.3	3 532.3	1.7 %
6 . Philippines	2 938.8	2 946.8	3 068.1	3 186.6	3 279.7	1.1 %
7 . Thailand	2 174.4	2 424.5	2 623.5	2 698.1	2 597.1	1.9 %
8 . Viet Nam	3 334.2	4 101.8	4 243.2	4 271.5	4 550.7	2.9 %
SOUTH ASIA						
9 . Bangladesh	2 702.8	3 229.8	3 483.6	3 302.5	3 448.2	3.1 %
10 . Bhutan	1 653.9	1 666.7	1 666.7	1 666.7	2 331.6	1.7 %
11 . India	2 609.2	3 236.1	2 943.6	3 131.5	2 914.5	1.3 %
12 . Maldives						
13 . Nepal	2 048.1	2 472.2	2 702.8	2 745.4	2 666.7	2.4 %
14 . Pakistan	2 368.6	3 074.4	3 031.2	2 754.2	2 881.9	1.7 %
15 . Sri Lanka	3 054.4	3 281.0	3 437.4	3 522.0	3 827.4	2.0 %
CENTRAL ASIA						
16 . Kazakhstan	3 991.5	2 807.0	2 972.3	2 871.4	3 028.8	-1.3 %
17 . Tajikistan	2 018.4	2 709.9	4 115.4	2 796.3	2 900.0	7.1 %
18 . Uzbekistan	2 960.7	2 562.7	1 239.4	1 232.7	2 389.0	-6.0 %
OTHER ASIA						
19 . China	5 795.9	6 334.4	6 264.2	6 152.4	6 265.9	0.9 %
20 . Korea DPR	7 601.4	4 039.7	3 158.9	3 601.8	3 757.4	-6.7 %
21 . Iran (Islamic Rep. of)	3 959.7	3 999.4	3 689.6	3 866.1	3 845.5	-0.4 %
22 . Mongolia						
23 . Korea Republic of	6 312.0	6 596.1	6 644.0	6 881.0	6 315.3	1.0 %
PACIFIC ISLANDS						
24 . Cook Islands						
25 . Fiji Islands	2 153.0	2 763.3	2 497.6	2 248.0	2 261.5	-0.7 %
26 . Kiribati						
27 . Marshall Islands						
28 . Nauru						
29 . Niue						
30 . Palau						
31 . Papua New Guinea	1 937.5	1 857.1	2 000.0	2 000.0	2 285.7	1.3 %
32 . Samoa						
33 . Solomon Islands		3 996.5	4 000.0	4 000.0	4 000.0	0.3 %
34 . Tonga						
35 . Vanuatu						
AVERAGE	3 077.5	3 308.6	3 325.2	3 299.3	3 416.5	1.4 %
DEVELOPED COUNTRIES						
36 . Australia	8 417.0	9 161.5	8 257.3	9 282.5	8 500.0	0.9 %
37 . Japan	6 275.4	6 414.3	6 702.3	6 635.4	6 582.4	1.5 %
38 . New Zealand						
AVERAGE	7 346.2	7 787.9	7 479.8	7 959.0	7 541.2	1.1 %
ASIA & PACIFIC*	3 683.5	4 068.6	3 990.3	4 021.0	4 007.3	1.0 %
REST OF WORLD	2 792.3	3 322.7	3 286.1	3 357.0	3 199.1	1.8 %
WORLD	3 586.9	3 987.4	3 916.6	3 952.8	3 916.4	1.1 %

Table 14. Rice paddy : area harvested

Unit: 1000 ha

Country	1992	1999	2000	2001	2002	Annual Growth Rate 1992 - 2002
DEVELOPING COUNTRIES						
SOUTHEAST ASIA						
1 . Cambodia	1 685.4	2 079.4	1 903.2	1 980.3	1 966.0	1.9 %
2 . Indonesia	11 103.3	11 963.2	11 793.0	11 500.0	11 641.3	0.7 %
3 . Lao PDR	565.7	717.6	719.4	746.8	690.0 *	3.1 %
4 . Malaysia	672.8	692.4	699.1	667.0	676.7	-0.1 %
5 . Myanmar	5 056.2	6 210.8	6 302.5	6 200.0 *	6 200.0 *	1.6 %
6 . Philippines	3 237.0	3 999.8	4 038.1	4 065.4	4 046.3	2.0 %
7 . Thailand	9 159.7	9 969.9	9 761.1	9 989.9	9 990.0 *	1.4 %
8 . Viet Nam	6 475.4	7 653.6	7 666.3	7 484.6	7 485.4	1.8 %
SOUTH ASIA						
9 . Bangladesh	10 178.4	10 713.0	10 801.2	10 661.0	11 059.0 *	1.0 %
10 . Bhutan	26.0 F	30.0 F	30.0 F	30.0 F	19.0	-0.7 %
11 . India	41 775.0	41 561.7	44 712.0	44 622.0	40 000.0 *	0.1 %
12 . Maldives						
13 . Nepal	1 262.1	1 551.0	1 560.0	1 517.0	1 545.0 *	1.5 %
14 . Pakistan	1 973.4	2 515.4	2 376.6	2 114.2	2 201.0 *	1.0 %
15 . Sri Lanka	766.0	870.8	832.0	765.0	730.0 *	-0.6 %
CENTRAL ASIA						
16 . Kazakhstan	117.0	71.0	72.1	69.2	65.7	-5.6 %
17 . Tajikistan	10.0	17.5	19.9	14.2	10.0 *	2.6 %
18 . Uzbekistan	182.0	164.2	124.9	55.0	59.9	-9.9 %
OTHER ASIA						
19 . China	32 487.4	31 637.1	30 301.5	29 144.0	28 177.0 *	-0.8 %
20 . Korea DPR	592.0	580.0	535.0	572.0	582.9	-0.4 %
21 . Iran (Islamic Rep. of)	596.0	587.2	534.3	514.8	550.0 *	-0.9 %
22 . Mongolia						
23 . Korea Republic of	1 157.0	1 066.2	1 072.4	1 083.1	1 053.0 *	-0.7 %
PACIFIC ISLANDS						
24 . Cook Islands						
25 . Fiji Islands	10.4	6.3	5.3	6.5 F	6.5 F	-4.7 %
26 . Kiribati						
27 . Marshall Islands						
28 . Nauru						
29 . Niue						
30 . Palau						
31 . Papua New Guinea	.3 F	.4 F	.4 F	.4 F	.4 F	0.9 %
32 . Samoa						
33 . Solomon Islands	.0 F	1.1	1.2 F	1.3 F	1.3 F	33.5 %
34 . Tonga						
35 . Vanuatu						
SUB-TOTAL	129 088.6	134 659.5	135 861.4	133 803.8	128 756.3	0.4 %
DEVELOPED COUNTRIES						
36 . Australia	113.7	151.7	133.3	177.0	150.0	3.8 %
37 . Japan	2 106.0	1 788.0	1 770.0	1 706.0	1 688.0	-2.8 %
38 . New Zealand						
SUB-TOTAL	2 219.7	1 939.7	1 903.3	1 883.0	1 838.0	-2.4 %
ASIA & PACIFIC*	131 308.3	136 599.2	137 764.7	135 686.8	130 594.3	.3 %
REST OF WORLD	15 953.4	16 706.2	16 092.9	15 545.1	16 549.9	0.3 %
WORLD	147 261.7	153 305.4	153 857.6	151 231.9	147 144.2	0.3 %

Table 15. Wheat : production

Unit: 1000 MT

Country	1992	1999	2000	2001	2002	Annual Growth Rate 1992 - 2002
DEVELOPING COUNTRIES						
SOUTHEAST ASIA						
1 . Cambodia						
2 . Indonesia						
3 . Lao PDR						
4 . Malaysia						
5 . Myanmar	143.3	117.2	93.6	103.0 F	103.0 F	-2.3 %
6 . Philippines						
7 . Thailand	0.7	0.8 F	0.8 *	0.8 *	0.8 *	1.9 %
8 . Viet Nam						
SOUTH ASIA						
9 . Bangladesh	1 065.1	1 908.0	1 840.0	1 673.0	1 606.0	5.7 %
10 . Bhutan	5.0	20.0 *	20.0 *	20.0 *	4.4	6.2 %
11 . India	55 689.5	71 287.5	76 368.9	69 680.9	71 814.3	2.8 %
12 . Maldives						%
13 . Nepal	762.0	1 086.5	1 183.5	1 157.9	1 258.1	5.0 %
14 . Pakistan	15 684.2	17 856.0	21 078.6	19 023.7	18 226.1	2.4 %
15 . Sri Lanka						
CENTRAL ASIA						
16 . Kazakhstan	18 285.0	11 241.9	9 073.5	12 706.8	12 700.0	-0.8 %
17 . Tajikistan	170.4	356.1	406.2	388.5	361.0 *	10.7 %
18 . Uzbekistan	964.0	3 601.8	3 521.7	3 786.0	4 956.0	17.8 %
OTHER ASIA						
19 . China	101 591.3	113 880.1	99 636.1	93 876.2	91 290.2	-0.7 %
20 . Korea DPR	123.0 *	97.0 *	50.0 *	123.9	130.0	-2.2 %
21 . Iran (Islamic Rep. of)	10 178.7	8 673.2	8 087.8	9 458.6	12 000.0 *	-0.8 %
22 . Mongolia	453.2	168.4	138.7	138.7	149.3	-11.8 %
23 . Korea Republic of	0.6	5.6	2.3	2.8	2.8 F	8.4 %
PACIFIC ISLANDS						
24 . Cook Islands						
25 . Fiji Islands						
26 . Kiribati						
27 . Marshall Islands						
28 . Nauru						
29 . Niue						
30 . Palau						
31 . Papua New Guinea						
32 . Samoa						
33 . Solomon Islands						
34 . Tonga						
35 . Vanuatu						
SUB-TOTAL	205 115.9	230 300.0	221 501.8	212 140.8	214 602.0	0.8 %
DEVELOPED COUNTRIES						
36 . Australia	14 738.7	24 757.0	22 108.0	24 854.0	9 385.0	2.6 %
37 . Japan	758.7	583.1	688.2	699.9	827.8	2.0 %
38 . New Zealand	191.0	320.0	326.0	364.0	355.0	6.2 %
SUB-TOTAL	15 688.4	25 660.1	23 122.2	25 917.9	10 567.8	2.7 %
ASIA & PACIFIC*	220 804.3	255 960.1	244 624.0	238 058.7	225 169.8	1.0 %
REST OF WORLD	344 354.1	331 827.4	341 325.7	352 426.7	347 709.2	0.4 %
WORLD	565 158.3	587 787.5	585 949.6	590 485.4	572 878.9	0.7 %

Table 16. Wheat : yield

Unit: kg/ha

Country	1992	1999	2000	2001	2002	Annual Growth Rate 1992 - 2002
DEVELOPING COUNTRIES						
SOUTHEAST ASIA						
1 . Cambodia						
2 . Indonesia						
3 . Lao PDR						
4 . Malaysia						
5 . Myanmar	974.2	1 112.4	1 166.7	981.0	981.0	1.4 %
6 . Philippines						
7 . Thailand	675.3	625.0	666.7	666.7	615.4	-0.3 %
8 . Viet Nam						
SOUTH ASIA						
9 . Bangladesh	1 853.4	2 162.7	2 210.4	2 164.3	2 164.4	2.1 %
10 . Bhutan	909.1	1 538.5	1 538.5	1 538.5	945.7	2.2 %
11 . India	2 394.0	2 590.1	2 778.5	2 708.1	2 770.4	1.7 %
12 . Maldives						%
13 . Nepal	1 333.8	1 695.5	1 793.1	1 806.3	1 885.9	3.8 %
14 . Pakistan	1 991.0	2 169.7	2 490.7	2 325.4	2 262.0	2.2 %
15 . Sri Lanka						
CENTRAL ASIA						
16 . Kazakhstan	1 332.4	1 286.8	902.8	1 180.3	1 089.5	1.7 %
17 . Tajikistan	928.6	1 092.4	1 183.9	1 190.5	1 244.8	3.2 %
18 . Uzbekistan	1 537.5	2 536.7	2 641.7	3 000.0	3 235.0	9.2 %
OTHER ASIA						
19 . China	3 331.2	3 946.6	3 738.2	3 806.2	3 884.7	1.4 %
20 . Korea DPR	1 366.7	2 020.8	847.5	2 162.8	2 063.5	3.5 %
21 . Iran (Islamic Rep. of)	1 468.7	1 830.2	1 585.6	1 703.3	1 904.8	2.0 %
22 . Mongolia	861.1	616.6	776.9	749.4	684.3	-2.0 %
23 . Korea Republic of	3 365.9	3 669.9	2 545.2	3 060.1	3 060.1	-1.5 %
PACIFIC ISLANDS						
24 . Cook Islands						
25 . Fiji Islands						
26 . Kiribati						
27 . Marshall Islands						
28 . Nauru						
29 . Niue						
30 . Palau						
31 . Papua New Guinea						
32 . Samoa						
33 . Solomon Islands						
34 . Tonga						
35 . Vanuatu						
AVERAGE	1 621.5	1 926.3	1 791.1	1 936.2	1 919.4	2.1 %
DEVELOPED COUNTRIES						
36 . Australia	1 781.2	2 006.6	1 820.9	2 143.1	850.8	-1.7 %
37 . Japan	3 537.1	3 454.4	3 760.7	3 554.6	4 001.0	1.1 %
38 . New Zealand	5 306.6	6 060.6	6 209.5	6 500.0	6 339.3	2.0 %
AVERAGE	3 541.6	3 840.5	3 930.4	4 065.9	3 730.4	1.3 %
ASIA & PACIFIC*	2 360.5	2 712.8	2 612.6	2 641.9	2 492.1	1.3 %
REST OF WORLD	2 671.8	2 788.6	2 801.2	2 825.5	2 891.7	1.0 %
WORLD	2 540.9	2 755.0	2 719.3	2 748.5	2 720.2	1.1 %

Table 17. Wheat : area harvested

Unit: 1000 ha

Country	1992	1999	2000	2001	2002	Annual Growth Rate 1992 - 2002
DEVELOPING COUNTRIES						
SOUTHEAST ASIA						
1 . Cambodia						
2 . Indonesia						
3 . Lao PDR						
4 . Malaysia						
5 . Myanmar	147.1	105.3	80.2	105.0 F	105.0 F	-3.6 %
6 . Philippines						
7 . Thailand	1.0	1.2 F	1.2 F	1.2 F	1.3 F	2.3 %
8 . Viet Nam						
SOUTH ASIA						
9 . Bangladesh	574.7	882.2	832.4	773.0	742.0	3.5 %
10 . Bhutan	5.5 F	13.0 *	13.0 *	13.0 *	4.6	4.0 %
11 . India	23 261.9	27 523.3	27 486.0	25 730.6	25 922.5	1.1 %
12 . Maldives						
13 . Nepal	571.3	640.8	660.0	641.0	667.1	1.1 %
14 . Pakistan	7 877.6	8 229.9	8 463.0	8 180.8	8 057.5	0.2 %
15 . Sri Lanka						
CENTRAL ASIA						
16 . Kazakhstan	13 722.9	8 736.3	10 050.1	10 766.1	11 656.5	-2.5 %
17 . Tajikistan	183.5	326.0	343.1	326.4	290.0 *	7.2 %
18 . Uzbekistan	627.0	1 419.9	1 333.1	1 262.0	1 532.0	7.8 %
OTHER ASIA						
19 . China	30 497.2	28 855.0	26 653.3	24 664.1	23 500.1 *	-2.1 %
20 . Korea DPR	90.0 F	48.0 *	59.0 *	57.3	63.0	-5.5 %
21 . Iran (Islamic Rep. of)	6 930.5	4 739.1	5 100.7	5 553.1	6 300.0 *	-2.7 %
22 . Mongolia	526.3	273.1	178.6	185.1	218.2	-10.0 %
23 . Korea Republic of	.2	1.5	.9	.9	.9 F	10.0 %
PACIFIC ISLANDS						
24 . Cook Islands						
25 . Fiji Islands						
26 . Kiribati						
27 . Marshall Islands						
28 . Nauru						
29 . Niue						
30 . Palau						
31 . Papua New Guinea						
32 . Samoa						
33 . Solomon Islands						
34 . Tonga						
35 . Vanuatu						
SUB-TOTAL	85 016.5	81 794.7	81 254.7	78 259.6	79 060.7	-0.8 %
DEVELOPED COUNTRIES						
36 . Australia	8 274.6	12 338.0	12 141.0	11 597.0	11 031.0	4.3 %
37 . Japan	214.5	168.8	183.0	196.9	206.9	0.8 %
38 . New Zealand	36.0 F	52.8	52.5	56.0	56.0	4.1 %
SUB-TOTAL	8 525.1	12 559.6	12 376.5	11 849.9	11 293.9	4.3 %
ASIA & PACIFIC*	93 541.7	94 354.3	93 631.2	90 109.5	90 354.6	-0.3 %
REST OF WORLD	128 887.2	118 995.9	121 848.0	124 732.0	120 244.2	-0.6 %
WORLD	222 428.8	213 350.1	215 479.2	214 841.5	210 598.8	-0.4 %

Table 18. Maize : production

Unit: 1000 MT

Country	1992	1999	2000	2001	2002	Annual Growth Rate 1992 - 2002
DEVELOPING COUNTRIES						
SOUTHEAST ASIA						
1 . Cambodia	60.0	95.3	157.0	185.6	168.1	15.0 %
2 . Indonesia	7 995.5	9 204.0	9 677.0	9 347.2	9 277.3	3.3 %
3 . Lao PDR	58.7	96.1	117.0	111.9	113.0 F	10.2 %
4 . Malaysia	36.0 *	57.0 *	65.0 *	67.0 *	70.0 *	7.3 %
5 . Myanmar	208.3	349.1	364.6	524.0 *	660.0 *	10.2 %
6 . Philippines	4 619.0	4 584.6	4 511.1	4 525.0	4 319.3	-0.2 %
7 . Thailand	3 672.0	4 286.2	4 462.0	4 466.0	4 170.0	2.1 %
8 . Viet Nam	747.9	1 753.1	2 005.9	2 122.8	2 314.7	11.2 %
SOUTH ASIA						
9 . Bangladesh	2.7	4.0	10.0	10.0 F	10.0 F	16.6 %
10 . Bhutan	40.0	70.0 *	70.0 *	70.0 *	48.5	2.6 %
11 . India	9 992.1	11 509.6	12 043.2	13 301.9	10 570.0	2.7 %
12 . Maldives	.0 *	.0 F	.0 F	.0 F	.0 F	-18.8 %
13 . Nepal	1 290.5	1 685.9	1 414.9	1 484.1	1 510.8	2.3 %
14 . Pakistan	1 183.6	1 652.0	1 643.2	1 664.4	1 689.0 F	3.7 %
15 . Sri Lanka	28.8	31.5	31.1	28.8	28.8 F	-0.6 %
CENTRAL ASIA						
16 . Kazakhstan	370.0	197.6	248.8	320.4	435.2	1.5 %
17 . Tajikistan	32.3	35.7	37.8	42.0	35.0 *	3.5 %
18 . Uzbekistan	367.2	167.9	131.4	100.0 *	232.0 *	-9.0 %
OTHER ASIA						
19 . China	95 772.9	128 287.2	106 179.8	114 254.0	123 175.0	2.0 %
20 . Korea DPR	3 718.0	1 235.0	1 041.0	1 483.0	1 651.0	-9.6 %
21 . Iran (Islamic Rep. of)	200.0 F	1 155.7	1 119.7	1 064.2	1 200.0 F	19.6 %
22 . Mongolia						
23 . Korea Republic of	92.2	79.3	64.2	57.0	60.0 *	-3.9 %
PACIFIC ISLANDS						
24 . Cook Islands						
25 . Fiji Islands	1.0	1.3 F	1.3 F	1.3 F	1.3 F	3.3 %
26 . Kiribati						
27 . Marshall Islands						
28 . Nauru						
29 . Niue						
30 . Palau						
31 . Papua New Guinea	3.5 F	6.5 F	7.2 F	8.3 F	8.5 F	8.9 %
32 . Samoa						
33 . Solomon Islands						
34 . Tonga						
35 . Vanuatu	.7 F	.7 F	.7 F	.7 F	.7 F	0.4 %
SUB-TOTAL	130 492.8	166 545.3	145 403.8	155 239.5	161 748.0	2.0 %
DEVELOPED COUNTRIES						
36 . Australia	269.0	338.0	406.0	345.0	521.0	7.6 %
37 . Japan	.7 F	.2 F	.2 F	.2 F	.2 F	-12.4 %
38 . New Zealand	163.8	197.0	181.0	177.0	156.6	1.7 %
SUB-TOTAL	433.5	535.2	587.2	522.2	677.7	5.6 %
ASIA & PACIFIC*	130 926.3	167 080.5	145 991.0	155 761.7	162 425.8	2.0 %
REST OF WORLD	402 599.8	440 293.8	446 305.7	458 705.6	440 163.5	1.9 %
WORLD	533 526.1	607 374.2	592 296.7	614 467.2	602 589.2	1.9 %

Table 19. Maize : yield

Unit: kg/ha

Country	1992	1999	2000	2001	2002	Annual Growth Rate 1992 - 2002
DEVELOPING COUNTRIES						
SOUTHEAST ASIA						
1 . Cambodia	1 250.0	1 594.8	2 734.5	2 761.2	2 512.1	9.7 %
2 . Indonesia	2 203.0	2 662.9	2 764.9	2 844.6	2 818.5	3.1 %
3 . Lao PDR	1 826.6	2 359.7	2 387.8	2 550.0	2 511.1	4.1 %
4 . Malaysia	1 714.3	2 111.1	2 407.4	3 045.5	3 043.5	5.2 %
5 . Myanmar	1 518.6	1 716.3	1 731.3	2 096.0	2 135.9	2.7 %
6 . Philippines	1 326.5	1 735.1	1 797.0	1 819.8	1 803.1	2.8 %
7 . Thailand	2 970.9	3 554.3	3 693.2	3 591.0	3 677.3	2.7 %
8 . Viet Nam	1 564.6	2 534.1	2 747.1	2 920.4	2 856.2	5.7 %
SOUTH ASIA						
9 . Bangladesh	931.9	1 234.6	2 059.7	2 000.0	2 000.0	9.3 %
10 . Bhutan	1 000.0	1 555.6	1 555.6	1 555.6	1 564.5	3.8 %
11 . India	1 675.8	1 792.2	1 821.6	2 017.5	1 704.8	1.8 %
12 . Maldives	1 000.0					
13 . Nepal	1 664.7	2 101.4	1 727.5	1 800.0	1 829.1	1.5 %
14 . Pakistan	1 364.4	1 717.8	1 740.7	1 767.6	1 768.6	2.8 %
15 . Sri Lanka	1 039.0	1 089.7	1 083.9	1 118.2	1 118.2	1.3 %
CENTRAL ASIA						
16 . Kazakhstan	3 140.9	3 016.8	3 335.1	3 712.6	4 135.0	4.1 %
17 . Tajikistan	2 961.3	3 035.8	3 163.4	4 666.0	2 692.3	3.4 %
18 . Uzbekistan	3 722.6	2 950.8	2 556.4	2 631.6	5 948.7	-0.4 %
OTHER ASIA						
19 . China	4 534.7	4 945.8	4 599.2	4 699.8	5 021.8	0.2 %
20 . Korea DPR	5 773.3	2 147.8	2 098.8	2 988.1	3 326.0	-6.9 %
21 . Iran (Islamic Rep. of)	4 444.4	6 200.3	6 165.6	6 161.3	6 000.0	3.5 %
22 . Mongolia						
23 . Korea Republic of	4 390.6	3 940.3	4 061.6	4 011.8	4 285.7	-0.4 %
PACIFIC ISLANDS						
24 . Cook Islands						
25 . Fiji Islands	2 161.4	2 549.0	2 549.0	2 549.0	2 549.0	4.7 %
26 . Kiribati						
27 . Marshall Islands						
28 . Nauru						
29 . Niue						
30 . Palau						
31 . Papua New Guinea	2 916.7	5 416.7	5 538.5	5 533.3	5 666.7	7.9 %
32 . Samoa						
33 . Solomon Islands						
34 . Tonga						
35 . Vanuatu	507.7	538.5	538.5	538.5	538.5	0.4 %
AVERAGE	2 304.2	2 500.1	2 594.3	2 775.2	2 860.3	2.3 %
DEVELOPED COUNTRIES						
36 . Australia	5 172.1	5 121.2	4 936.0	4 600.0	5 602.2	0.6 %
37 . Japan	2 518.0	2 400.0	2 465.8	2 465.8	2 465.8	-0.2 %
38 . New Zealand	9 119.6	10 130.6	10 226.0	10 411.8	10 436.6	1.5 %
AVERAGE	5 603.2	5 883.9	5 875.9	5 825.8	6 168.2	1.0 %
ASIA & PACIFIC*	3 368.3	3 838.0	3 581.2	3 727.8	3 902.1	1.0 %
REST OF WORLD	4 101.8	4 621.2	4 578.6	4 713.8	4 531.7	2.0 %
WORLD	3 893.7	4 375.6	4 284.5	4 417.6	4 342.8	1.7 %

Table 20. Maize : area harvested

Unit: 1000 ha

Country	1992	1999	2000	2001	2002	Annual Growth Rate 1992 - 2002
DEVELOPING COUNTRIES						
SOUTHEAST ASIA						
1 . Cambodia	48.0	59.7	57.4	67.2	66.9	4.8 %
2 . Indonesia	3 629.3	3 456.4	3 500.0	3 285.9	3 291.6	0.2 %
3 . Lao PDR	32.1	40.7	49.0	43.9	45.0 F	5.8 %
4 . Malaysia	21.0 *	27.0 *	27.0 *	22.0 *	23.0 *	2.0 %
5 . Myanmar	137.2	203.4	210.6	250.0 *	309.0 *	7.4 %
6 . Philippines	3 482.0	2 642.2	2 510.3	2 486.6	2 395.5	-2.9 %
7 . Thailand	1 236.0	1 205.9	1 208.2	1 243.7	1 134.0 *	-0.7 %
8 . Viet Nam	478.0	691.8	730.2	726.9	810.4	5.2 %
SOUTH ASIA						
9 . Bangladesh	2.9	3.2	4.9	5.0 F	5.0 F	6.7 %
10 . Bhutan	40.0 F	45.0 *	45.0 *	45.0 *	31.0	-1.2 %
11 . India	5 962.5	6 422.1	6 611.3	6 593.2	6 200.0 *	0.9 %
12 . Maldives	.0 F	.0 F	.0 F	.0 F	.0 F	-18.8 %
13 . Nepal	775.2	802.3	819.0	824.5	826.0	0.8 %
14 . Pakistan	867.5	961.7	944.0	941.6	955.0 F	0.9 %
15 . Sri Lanka	27.7	28.9	28.6	25.7	25.7 F	-1.9 %
CENTRAL ASIA						
16 . Kazakhstan	117.8	65.5	74.6	86.3	105.2	-2.5 %
17 . Tajikistan	10.9	11.8	11.9	9.0	13.0 *	0.1 %
18 . Uzbekistan	98.6	56.9	51.4	38.0 *	39.0 *	-8.7 %
OTHER ASIA						
19 . China	21 120.0	25 938.9	23 086.4	24 310.7	24 528.0 *	1.8 %
20 . Korea DPR	644.0	575.0	496.0	496.3	496.4	-2.9 %
21 . Iran (Islamic Rep. of)	45.0 F	186.4	181.6	172.7	200.0 F	15.5 %
22 . Mongolia						
23 . Korea Republic of	21.0 *	20.1	15.8	14.2	14.0 *	-3.5 %
PACIFIC ISLANDS						
24 . Cook Islands						
25 . Fiji Islands	.4	.5 F	.5 F	.5 F	.5 F	-1.4 %
26 . Kiribati						
27 . Marshall Islands						
28 . Nauru						
29 . Niue						
30 . Palau						
31 . Papua New Guinea	1.2 F	1.2 F	1.3 F	1.5 F	1.5 F	1.0 %
32 . Samoa						
33 . Solomon Islands						
34 . Tonga						
35 . Vanuatu	1.3 F	1.3 F	1.3 F	1.3 F	1.3 F	0.0 %
SUB-TOTAL	38 799.8	43 447.9	40 666.4	41 691.7	41 517.0	1.1 %
DEVELOPED COUNTRIES						
36 . Australia	52.0	66.0	82.3	75.0	93.0	7.0 %
37 . Japan	.3	.1	.1	.1 F	.1 F	-12.2 %
38 . New Zealand	18.0	19.4	17.7	17.0	15.0	0.2 %
SUB-TOTAL	70.2	85.5	100.0	92.1	108.1	5.5 %
ASIA & PACIFIC*	38 870.0	43 533.5	40 766.4	41 783.7	41 625.1	1.1 %
REST OF WORLD	98 152.6	95 276.8	97 475.6	97 311.0	97 130.3	0.0 %
WORLD	137 022.6	138 810.3	138 242.0	139 094.7	138 755.4	0.3 %

Table 21. Millet : production

Unit: 1000 MT

Country	1992	1999	2000	2001	2002	Annual Growth Rate 1992 - 2002
DEVELOPING COUNTRIES						
SOUTHEAST ASIA						
1 . Cambodia						
2 . Indonesia						
3 . Lao PDR						
4 . Malaysia						
5 . Myanmar	137.3	168.8	168.9	170.0 F	170.0 F	2.7 %
6 . Philippines						
7 . Thailand						
8 . Viet Nam						
SOUTH ASIA						
9 . Bangladesh	65.4	55.0	55.0	57.0 F	57.0 F	-1.2 %
10 . Bhutan	6.5 F	7.0 F	7.0 F	7.0 F	3.8	-2.4 %
11 . India	12 280.9	8 689.9	10 077.3	11 433.5	6 150.0	-2.2 %
12 . Maldives	.0 *	.0	.0	.0 F	.0 F	2.4 %
13 . Nepal	236.8	291.4	269.9	282.9	282.6	1.2 %
14 . Pakistan	203.1	155.6	199.0	216.4	180.0 *	1.0 %
15 . Sri Lanka	5.3	4.9	5.0	4.3	4.3 F	-3.9 %
CENTRAL ASIA						
16 . Kazakhstan	447.0	43.8	62.3	65.3	39.2	-16.4 %
17 . Tajikistan						
18 . Uzbekistan	.5	3.5 *	2.7 *	1.6 *	3.6 *	20.7 %
OTHER ASIA						
19 . China	3 317.6	2 318.6	2 125.7	1 966.8	2 070.8 *	-6.6 %
20 . Korea DPR	50.0 F	20.0 F	45.0 F	45.0 F	45.0 F	1.9 %
21 . Iran (Islamic Rep. of)	7.0 F	10.0 F	9.0 F	9.0 F	8.0 F	4.5 %
22 . Mongolia						
23 . Korea Republic of	1.7	1.6	1.8	1.5 F	1.5 F	-1.8 %
PACIFIC ISLANDS						
24 . Cook Islands						
25 . Fiji Islands						
26 . Kiribati						
27 . Marshall Islands						
28 . Nauru						
29 . Niue						
30 . Palau						
31 . Papua New Guinea						
32 . Samoa						
33 . Solomon Islands						
34 . Tonga						
35 . Vanuatu						
SUB-TOTAL	16 759.0	11 770.2	13 028.6	14 260.2	9 015.7	-3.1 %
DEVELOPED COUNTRIES						
36 . Australia	43.0	43.0 F	56.8	60.0 F	63.0 F	8.5 %
37 . Japan	.6 F	.3	.3 F	.3 F	.3 F	-10.3 %
38 . New Zealand						
SUB-TOTAL	43.6	43.3	57.1	60.3	63.3	8.2 %
ASIA & PACIFIC*	16 802.6	11 813.5	13 085.7	14 320.5	9 079.0	-3.0 %
REST OF WORLD	12 804.5	15 440.0	14 605.3	14 809.1	14 259.3	1.7 %
WORLD	29 607.1	27 253.5	27 690.9	29 129.6	23 338.3	-.6 %

Table 22. Millet : yield

Unit: kg/ha

Country	1992	1999	2000	2001	2002	Annual Growth Rate 1992 - 2002
DEVELOPING COUNTRIES						
SOUTHEAST ASIA						
1 . Cambodia						
2 . Indonesia						
3 . Lao PDR						
4 . Malaysia						
5 . Myanmar	674.8	671.3	675.6	680.0	680.0	0.2 %
6 . Philippines						
7 . Thailand						
8 . Viet Nam						
SOUTH ASIA						
9 . Bangladesh	742.3	750.9	750.9	712.5	712.5	-0.1 %
10 . Bhutan	833.3	875.0	875.0	875.0	612.9	-1.4 %
11 . India	846.7	727.7	774.5	912.7	683.3	0.6 %
12 . Maldives	1 000.0	1 000.0	800.0	1 000.0	1 000.0	-1.8 %
13 . Nepal	1 173.4	1 103.9	1 024.6	1 088.4	1 094.7	-0.2 %
14 . Pakistan	416.8	497.1	510.8	518.8	450.0	1.6 %
15 . Sri Lanka	605.8	739.9	737.4	742.2	742.2	1.4 %
CENTRAL ASIA						
16 . Kazakhstan	522.7	441.5	477.8	629.1	735.4	3.3 %
17 . Tajikistan						
18 . Uzbekistan	610.4	3 500.0	2 700.0	3 200.0	7 200.0	21.7 %
OTHER ASIA						
19 . China	1 776.3	1 744.2	1 700.2	1 712.3	1 881.8	-1.6 %
20 . Korea DPR	1 111.1	1 000.0	1 000.0	1 000.0	1 000.0	-0.2 %
21 . Iran (Islamic Rep. of)	1 400.0	833.3	818.2	818.2	800.0	-5.7 %
22 . Mongolia						
23 . Korea Republic of	1 384.6	965.9	1 231.6	1 176.5	1 176.5	-1.2 %
PACIFIC ISLANDS						
24 . Cook Islands						
25 . Fiji Islands						
26 . Kiribati						
27 . Marshall Islands						
28 . Nauru						
29 . Niue						
30 . Palau						
31 . Papua New Guinea						
32 . Samoa						
33 . Solomon Islands						
34 . Tonga						
35 . Vanuatu						
AVERAGE	935.6	1 060.8	1 005.5	1 076.1	1 340.7	2.1 %
DEVELOPED COUNTRIES						
36 . Australia	1 253.6	1 228.6	1 457.4	1 500.0	1 536.6	5.3 %
37 . Japan	1 714.3	1 000.0	1 000.0	1 000.0	1 000.0	-7.3 %
38 . New Zealand						
AVERAGE	1 483.9	1 114.3	1 228.7	1 250.0	1 268.3	-1.6 %
ASIA & PACIFIC*	917.6	822.8	845.2	961.2	806.9	-0.1 %
REST OF WORLD	668.3	712.0	675.2	669.0	643.9	0.3 %
WORLD	790.1	756.2	746.1	786.6	698.8	-0.1 %

Table 23. Millet : area harvested

Unit: 1000 ha

Country	1992	1999	2000	2001	2002	Annual Growth Rate 1992 - 2002
DEVELOPING COUNTRIES						
SOUTHEAST ASIA						
1 . Cambodia						
2 . Indonesia						
3 . Lao PDR						
4 . Malaysia						
5 . Myanmar	203.4	251.4	250.0	250.0 F	250.0 F	2.5 %
6 . Philippines						
7 . Thailand						
8 . Viet Nam						
SOUTH ASIA						
9 . Bangladesh	88.1	73.2	73.2	80.0 F	80.0 F	-1.1 %
10 . Bhutan	7.8 F	8.0 F	8.0 F	8.0 F	6.2	-1.0 %
11 . India	14 505.2	11 942.4	13 012.2	12 527.2	9 000.0 *	-2.7 %
12 . Maldives	.0 F	.0	.0 F	.0 F	.0 F	4.2 %
13 . Nepal	201.8	264.0	263.5	259.9	258.1	1.4 %
14 . Pakistan	487.3	313.0	389.6	417.1	400.0 *	-0.6 %
15 . Sri Lanka	8.7	6.7	6.7	5.7	5.7 F	-5.3 %
CENTRAL ASIA						
16 . Kazakhstan	855.2	99.2	130.4	103.8	53.3	-19.0 %
17 . Tajikistan						
18 . Uzbekistan	.8	1.0 *	1.0 *	.5 *	.5 *	-0.9 %
OTHER ASIA						
19 . China	1 867.7	1 329.4	1 250.3	1 148.6	1 100.4 *	-5.1 %
20 . Korea DPR	45.0 F	20.0 F	45.0 *	45.0 F	45.0 F	2.1 %
21 . Iran (Islamic Rep. of)	5.0 F	12.0 F	11.0 F	11.0 F	10.0 F	10.8 %
22 . Mongolia						
23 . Korea Republic of	1.2	1.7	1.4	1.3	1.3 F	-0.5 %
PACIFIC ISLANDS						
24 . Cook Islands						
25 . Fiji Islands						
26 . Kiribati						
27 . Marshall Islands						
28 . Nauru						
29 . Niue						
30 . Palau						
31 . Papua New Guinea						
32 . Samoa						
33 . Solomon Islands						
34 . Tonga						
35 . Vanuatu						
SUB-TOTAL	18 277.3	14 321.9	15 442.3	14 858.1	11 210.6	-3.0 %
DEVELOPED COUNTRIES						
36 . Australia	34.3	35.0 F	39.0	40.0 F	41.0 F	3.1 %
37 . Japan	.4 F	.3	.3 F	.3 F	.3 F	-3.3 %
38 . New Zealand						
SUB-TOTAL	34.6	35.3	39.3	40.3	41.3	3.0 %
ASIA & PACIFIC*	18 311.9	14 357.2	15 481.6	14 898.4	11 251.9	-3.0 %
REST OF WORLD	19 159.6	21 684.6	21 630.8	22 135.0	22 143.8	1.4 %
WORLD	37 471.5	36 041.8	37 112.4	37 033.4	33 395.7	-0.5 %

Table 24. Cereals : production

Unit: 1000 MT

Country	1992	1999	2000	2001	2002	Annual Growth Rate 1992 - 2002
DEVELOPING COUNTRIES						
SOUTHEAST ASIA						
1 . Cambodia	2 281.0	4 136.2	4 183.1	4 284.6	3 908.1	6.7 %
2 . Indonesia	56 235.5	60 070.4	61 575.0	59 808.0	60 881.0	1.1 %
3 . Lao PDR	1 561.1	2 198.9	2 318.7	2 446.4	2 523.0	6.6 %
4 . Malaysia	2 048.7	2 093.6	2 205.8	2 161.0	2 161.0	0.1 %
5 . Myanmar	15 342.4	20 776.1	21 965.9	22 713.0	22 849.0	3.5 %
6 . Philippines	14 132.3	16 371.2	16 900.5	17 479.9	17 589.9	2.1 %
7 . Thailand	23 864.0	28 647.7	30 275.7	31 634.0	30 484.4	3.2 %
8 . Viet Nam	22 338.2	33 146.9	34 535.4	34 092.9	36 378.2	5.1 %
SOUTH ASIA						
9 . Bangladesh	28 654.3	36 573.5	39 538.5	38 014.0	39 811.0	4.3 %
10 . Bhutan	105.8	159.3	159.3	159.3	106.9	1.8 %
11 . India	201 468.4	236 206.0	239 079.9	243 375.2	213 590.1	1.4 %
12 . Maldives	.0	.0	.0	.0 F	.0 F	-8.1 %
13 . Nepal	4 901.8	6 930.0	7 115.6	7 120.0	7 212.2	3.6 %
14 . Pakistan	22 123.4	27 754.8	30 460.7	27 048.0	26 767.9	2.5 %
15 . Sri Lanka	2 373.9	2 893.6	2 896.1	2 727.6	2 827.1	1.4 %
CENTRAL ASIA						
16 . Kazakhstan	29 649.0	14 248.4	11 547.1	15 913.8	15 952.1	-4.5 %
17 . Tajikistan	275.7	474.3	544.9	486.6	440.3 *	8.0 %
18 . Uzbekistan	2 177.6	4 304.0	3 915.6	4 032.9	5 510.4	8.7 %
OTHER ASIA						
19 . China	404 275.1	455 192.4	407 335.8	398 395.1	402 000.6	0.1 %
20 . Korea DPR	8 681.0	3 845.0	2 951.0	3 877.7	4 181.0	-8.0 %
21 . Iran (Islamic Rep. of)	15 810.8	14 186.1	12 874.0	14 945.1	17 323.0	-0.8 %
22 . Mongolia	495.5	169.8	140.4	140.5	151.3	-12.2 %
23 . Korea Republic of	7 845.7	7 458.4	7 428.9	7 905.5	7 105.5	0.1 %
PACIFIC ISLANDS						
24 . Cook Islands						
25 . Fiji Islands	23.5	18.6	14.5	15.9	16.0 F	-4.9 %
26 . Kiribati						
27 . Marshall Islands						
28 . Nauru						
29 . Niue						
30 . Palau						
31 . Papua New Guinea	5.4	10.6	11.3	12.6 F	12.8 F	9.0 %
32 . Samoa						
33 . Solomon Islands	.0 F	4.5 *	4.8 F	5.2 F	5.2 F	33.9 %
34 . Tonga						
35 . Vanuatu	.7 F	.7 F	.7 F	.7 F	.7 F	0.4 %
SUB-TOTAL	866 670.8	977 870.9	939 979.1	938 795.6	919 788.8	1.0 %
DEVELOPED COUNTRIES						
36 . Australia	25 096.7	35 369.8	34 447.9	39 257.5	17 655.5	2.4 %
37 . Japan	14 285.7	12 282.7	12 796.0	12 254.8	12 184.5	-1.2 %
38 . New Zealand	736.2	872.7	854.4	882.8	954.8	1.8 %
SUB-TOTAL	40 118.6	48 525.2	48 098.3	52 395.1	30 794.7	1.2 %
ASIA & PACIFIC*	906 789	1 026 396	988 077	991 191	950 584	1.0 %
REST OF WORLD	1 066 434	1 059 153	1 076 186	1 115 710	1 078 802	0.7 %
WORLD	1 973 224	2 085 549	2 064 263	2 106 900	2 029 386	0.8 %

Table 25.Cereals : yield

Unit: kg/ha

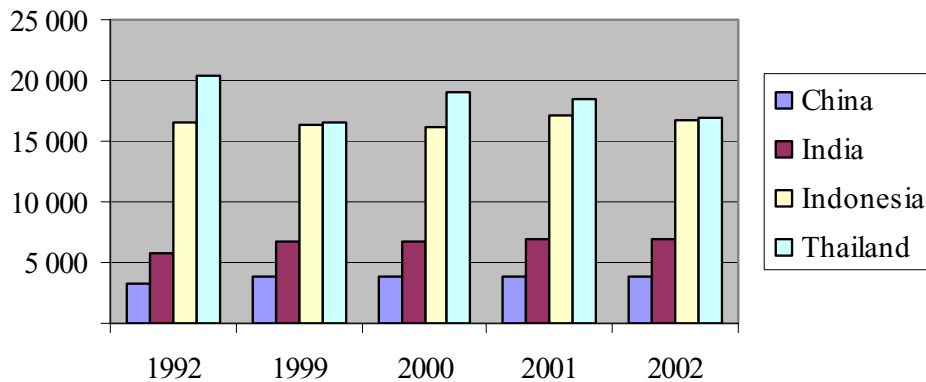
Country	1992	1999	2000	2001	2002	Annual Growth Rate 1992 - 2002
DEVELOPING COUNTRIES						
SOUTHEAST ASIA						
1 . Cambodia	1 315.9	1 933.5	2 133.6	2 092.6	1 922.4	4.7 %
2 . Indonesia	3 817.1	3 895.7	4 026.4	4 044.9	4 077.0	0.5 %
3 . Lao PDR	2 611.0	2 899.8	3 017.7	3 094.1	3 432.7	3.2 %
4 . Malaysia	2 953.1	2 910.3	3 037.9	3 136.4	3 088.5	0.1 %
5 . Myanmar	2 750.8	3 050.0	3 190.7	3 316.3	3 307.6	1.7 %
6 . Philippines	2 103.3	2 464.8	2 580.9	2 667.9	2 730.6	2.3 %
7 . Thailand	2 254.2	2 537.0	2 730.3	2 785.0	2 692.2	2.0 %
8 . Viet Nam	3 212.6	3 971.9	4 113.1	4 151.9	4 385.1	2.9 %
SOUTH ASIA						
9 . Bangladesh	2 638.3	3 131.0	3 373.8	3 298.3	3 348.0	3.1 %
10 . Bhutan	1 152.3	1 456.1	1 456.1	1 456.1	1 591.5	2.5 %
11 . India	2 024.8	2 398.2	2 334.7	2 429.5	2 339.7	1.8 %
12 . Maldives	1 000.0	1 000.0	800.0	1 000.0	1 000.0	-1.3 %
13 . Nepal	1 726.0	2 106.5	2 136.3	2 177.0	2 169.8	2.4 %
14 . Pakistan	1 881.5	2 217.8	2 407.9	2 230.9	2 207.8	2.2 %
15 . Sri Lanka	2 957.7	3 192.0	3 338.2	3 424.2	3 712.4	2.1 %
CENTRAL ASIA						
16 . Kazakhstan	1 338.4	1 303.8	943.7	1 218.4	1 143.7	1.6 %
17 . Tajikistan	1 036.6	1 217.5	1 323.3	1 278.9	1 307.9	3.0 %
18 . Uzbekistan	1 777.2	2 455.2	2 435.4	2 822.4	3 229.3	6.6 %
OTHER ASIA						
19 . China	4 366.0	4 947.1	4 789.3	4 800.5	4 963.4	1.1 %
20 . Korea DPR	5 615.1	2 867.3	2 367.4	3 020.7	3 206.9	-6.1 %
21 . Iran (Islamic Rep. of)	1 615.4	2 047.8	1 833.3	1 931.2	2 047.6	2.0 %
22 . Mongolia	833.9	615.0	779.0	749.4	685.6	-1.6 %
23 . Korea Republic of	6 067.0	6 367.5	6 374.1	6 602.5	6 088.6	1.0 %
PACIFIC ISLANDS						
24 . Cook Islands						
25 . Fiji Islands	2 153.9	2 747.5	2 503.0	2 270.9	2 283.5	-0.4 %
26 . Kiribati						
27 . Marshall Islands						
28 . Nauru						
29 . Niue						
30 . Palau						
31 . Papua New Guinea	2 683.2	3 981.1	4 109.1	4 064.5	4 196.7	5.4 %
32 . Samoa						
33 . Solomon Islands		3 996.5	4 000.0	4 000.0	4 000.0	0.3 %
34 . Tonga						
35 . Vanuatu	507.7	538.5	538.5	538.5	538.5	0.4 %
AVERAGE	2 310.9	2 675.9	2 691.6	2 763.1	2 803.6	2.3 %
DEVELOPED COUNTRIES						
36 . Australia	1 886.1	2 111.3	1 962.6	2 248.8	1 084.3	-0.7 %
37 . Japan	5 876.8	5 998.9	6 256.8	6 112.4	6 089.6	1.2 %
38 . New Zealand	5 437.2	6 168.6	6 273.1	6 467.4	6 343.8	2.0 %
AVERAGE	4 400.0	4 759.6	4 830.9	4 942.8	4 505.9	1.3 %
ASIA & PACIFIC*	2 844.4	3 280.5	3 172.9	3 226.9	3 196.2	1.4 %
REST OF WORLD	2 732.3	2 975.5	2 972.1	3 020.3	2 989.9	1.4 %
WORLD	2 782.7	3 118.2	3 064.9	3 114.1	3 083.1	1.4 %

Table 26. Cereals: area harvested

Unit: 1000 ha

Country	1992	1999	2000	2001	2002	Annual Growth Rate 1992 - 2002
DEVELOPING COUNTRIES						
SOUTHEAST ASIA						
1 . Cambodia	1 733.4	2 139.2	1 960.6	2 047.5	2 032.9	2.0 %
2 . Indonesia	14 732.7	15 419.6	15 293.0	14 785.9	14 932.9	0.6 %
3 . Lao PDR	597.9	758.3	768.4	790.6	735.0	3.3 %
4 . Malaysia	693.8	719.4	726.1	689.0	699.7	0.0 %
5 . Myanmar	5 577.5	6 811.9	6 884.3	6 849.0	6 908.0	1.8 %
6 . Philippines	6 719.2	6 642.0	6 548.4	6 552.0	6 441.8	-0.2 %
7 . Thailand	10 586.7	11 292.1	11 088.9	11 358.7	11 323.3	1.1 %
8 . Viet Nam	6 953.4	8 345.4	8 396.5	8 211.5	8 295.8	2.1 %
SOUTH ASIA						
9 . Bangladesh	10 860.8	11 681.0	11 719.5	11 525.5	11 890.9	1.1 %
10 . Bhutan	91.8 F	109.4	109.4	109.4	67.2	-0.7 %
11 . India	99 499.5	98 493.4	102 402.4	100 175.5	91 288.8	-0.3 %
12 . Maldives	.0 F	.0	.0 F	.0 F	.0 F	-6.9 %
13 . Nepal	2 840.0	3 289.9	3 330.7	3 270.6	3 323.9	1.2 %
14 . Pakistan	11 758.2	12 514.6	12 650.4	12 124.3	12 124.1	0.3 %
15 . Sri Lanka	802.6	906.5	867.5	796.6	761.5	-0.7 %
CENTRAL ASIA						
16 . Kazakhstan	22 152.4	10 928.0	12 236.6	13 061.4	13 947.3	-6.1 %
17 . Tajikistan	266.0	389.6	411.8	380.5	336.7	4.8 %
18 . Uzbekistan	1 225.3	1 753.0	1 607.8	1 428.9	1 706.4	2.0 %
OTHER ASIA						
19 . China	92 596.3	92 012.3	85 051.7	82 989.9	80 993.3	-0.9 %
20 . Korea DPR	1 546.0	1 341.0	1 246.5	1 283.7	1 303.7	-2.1 %
21 . Iran (Islamic Rep. of)	9 787.4	6 927.6	7 022.1	7 738.8	8 460.0	-2.7 %
22 . Mongolia	594.2	276.1	180.2	187.5	220.7	-10.8 %
23 . Korea Republic of	1 293.2	1 171.3	1 165.5	1 197.4	1 167.0	-0.8 %
PACIFIC ISLANDS						
24 . Cook Islands						
25 . Fiji Islands	10.9	6.8	5.8	7.0 F	7.0 F	-4.6 %
26 . Kiribati						
27 . Marshall Islands						
28 . Nauru						
29 . Niue						
30 . Palau						
31 . Papua New Guinea	2.0 F	2.7 F	2.8 F	3.1 F	3.1 F	3.5 %
32 . Samoa						
33 . Solomon Islands	.0 F	1.1	1.2 F	1.3 F	1.3 F	33.5 %
34 . Tonga						
35 . Vanuatu	1.3 F	1.3 F	1.3 F	1.3 F	1.3 F	0.0 %
SUB-TOTAL	302 922.2	293 933.4	291 679.4	287 566.9	278 973.6	-0.6 %
DEVELOPED COUNTRIES						
36 . Australia	13 306.5	16 752.7	17 552.3	17 457.5	16 282.5	3.2 %
37 . Japan	2 430.9	2 047.5	2 045.1	2 004.9	2 000.9	-2.4 %
38 . New Zealand	135.4	141.5	136.2	136.5	150.5	-0.2 %
SUB-TOTAL	15 872.8	18 941.7	19 733.6	19 598.9	18 433.9	2.4 %
ASIA & PACIFIC*	318 794.9	312 875.1	311 413.0	307 165.9	297 407.4	-0.4 %
REST OF WORLD	390 311.9	355 960.0	362 099.1	369 404.0	360 812.9	-0.8 %
WORLD	709 106.8	668 835.1	673 512.1	676 569.9	658 220.4	-0.6 %

Countries in Asia-Pacific region with largest production (1000 MT) of cassava



STAPLE FOOD CROPS

B. Root Crops

Countries in Asia-Pacific region with highest annual growth rates for production of roots and tubers

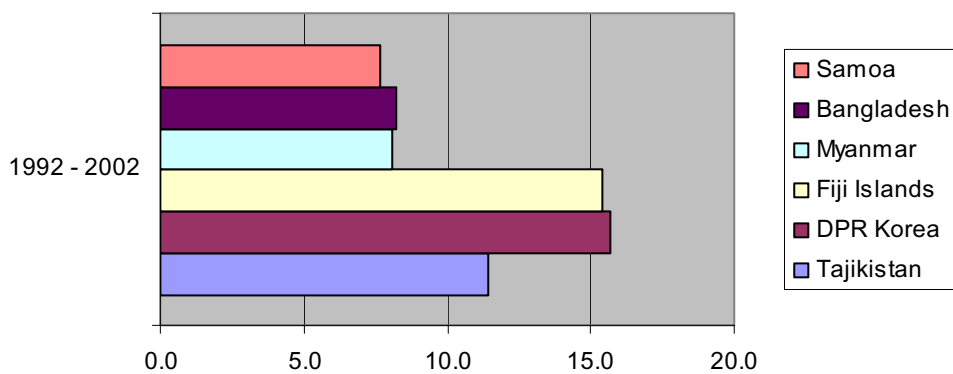


Table 27. Cassava : production

Unit: 1000 MT

Country	1992	1999	2000	2001	2002	Annual Growth Rate 1992 - 2002
DEVELOPING COUNTRIES						
SOUTHEAST ASIA						
1 . Cambodia	150.0	228.5	147.8	142.3	186.8	9.2 %
2 . Indonesia	16 515.9	16 438.1	16 089.1	17 054.6	16 723.3	0.1 %
3 . Lao PDR	67.0 *	71.0 *	71.0 *	71.0 F	70.0 F	0.5 %
4 . Malaysia	430.0 F	380.0 F	380.0 F	380.0 F	370.0 F	-1.8 %
5 . Myanmar	40.7	88.1	77.2	96.8	96.8 F	6.4 %
6 . Philippines	1 797.8	1 890.3	1 765.7	1 652.0	1 652.0 F	-1.1 %
7 . Thailand	20 356.0	16 506.6	19 064.0	18 396.0	16 870.0	-1.3 %
8 . Viet Nam	2 567.9	1 800.5	1 986.3	2 806.2	4 157.7	1.7 %
SOUTH ASIA						
9 . Bangladesh						
10 . Bhutan						
11 . India	5 832.5	6 700.0 F	6 800.0 F	6 900.0 F	6 900.0 F	2.4 %
12 . Maldives	.0 F	.0	.0	.1	.1 F	12.9 %
13 . Nepal						
14 . Pakistan						
15 . Sri Lanka	302.2	251.5	249.1	233.6	234.0 F	-3.1 %
CENTRAL ASIA						
16 . Kazakhstan						
17 . Tajikistan						
18 . Uzbekistan						
OTHER ASIA						
19 . China	3 357.3 F	3 750.7 F	3 800.9 F	3 851.3 F	3 851.3 F	1.5 %
20 . DPR Korea						
21 . Iran (Islamic Rep. of)						
22 . Mongolia						
23 . Rep.of Korea						
PACIFIC ISLANDS						
24 . Cook Islands	3.99 F	3.00 F	3.00 F	3.00 F	3.00 F	-2.6 %
25 . Fiji Islands	8.06	26.90	31.94	32.58	33.00 F	13.7 %
26 . Kiribati						
27 . Marshall Islands						
28 . Nauru						
29 . Niue	.04 F	.04 F	.04 F	.04 F	.04 F	0.0 %
30 . Palau						
31 . Papua New Guinea	113.00 *	120.00 *	120.00 *	125.00 F	125.00 F	1.1 %
32 . Samoa	.25 F	.30 F	.30 F	.30 F	.30 F	2.4 %
33 . Solomon Islands	1.50 F	2.10 F	2.30 F	2.30 F	2.30 F	4.5 %
34 . Tonga	28.86	16.00 F	9.07	9.07 F	9.07 F	-15.6 %
35 . Vanuatu						
SUB-TOTAL	51 573.0	48 273.8	50 597.8	51 756.2	51 284.7	0.0 %
DEVELOPED COUNTRIES						
36 . Australia						
37 . Japan						
38 . New Zealand						
SUB-TOTAL						
ASIA & PACIFIC*	51 573.0	48 273.8	50 597.8	51 756.2	51 284.7	0.0 %
REST OF WORLD	110 588.2	123 387.1	127 969.4	131 532.7	133 567.9	2.0 %
WORLD	162 161.3	171 660.9	178 567.2	183 288.9	184 852.5	1.4 %

Table 28. Cassava : yield

Unit: kg/ha

Country	1992	1999	2000	2001	2002	Annual Growth Rate 1992 - 2002
DEVELOPING COUNTRIES						
SOUTHEAST ASIA						
1 . Cambodia	9 375.0	16 318.8	9 607.5	10 468.1	10 263.7	6.2 %
2 . Indonesia	12 222.0	12 176.3	12 530.5	12 940.7	12 963.8	0.8 %
3 . Lao PDR	13 400.0	13 653.9	13 653.9	13 653.9	13 461.5	0.0 %
4 . Malaysia	10 487.8	10 000.0	10 000.0	10 000.0	9 736.8	-0.7 %
5 . Myanmar	9 234.7	11 394.0	10 072.8	10 685.1	10 685.1	1.8 %
6 . Philippines	8 799.6	8 453.2	8 399.8	7 607.0	7 607.0	-1.2 %
7 . Thailand	14 033.2	15 492.8	16 857.7	17 959.3	16 378.6	2.5 %
8 . Viet Nam	9 048.3	7 988.0	8 359.9	10 633.6	12 602.9	2.2 %
SOUTH ASIA						
9 . Bangladesh						
10 . Bhutan						
11 . India	23 246.3	25 000.0	25 185.2	25 555.6	25 555.6	0.9 %
12 . Maldives	3 000.0	3 900.0	2 071.4	4 500.0	4 500.0	3.9 %
13 . Nepal						
14 . Pakistan						
15 . Sri Lanka	8 845.3	8 546.0	8 433.0	8 556.0	8 509.1	-0.8 %
CENTRAL ASIA						
16 . Kazakhstan						
17 . Tajikistan						
18 . Uzbekistan						
OTHER ASIA						
19 . China	14 562.4	15 957.1	15 965.1	16 040.5	16 040.5	1.0 %
20 . DPR Korea						
21 . Iran (Islamic Rep. of)						
22 . Mongolia						
23 . Rep.of Korea						
PACIFIC ISLANDS						
24 . Cook Islands	33 250.0	17 647.1	17 647.1	17 647.1	17 647.1	-4.3 %
25 . Fiji Islands	5 078.1	13 450.0	13 309.6	13 575.8	13 750.0	11.4 %
26 . Kiribati						
27 . Marshall Islands						
28 . Nauru						
29 . Niue	5 142.9	5 142.9	5 142.9	5 142.9	5 142.9	0.0 %
30 . Palau						
31 . Papua New Guinea	10 660.4	10 909.1	10 909.1	10 869.6	10 869.6	0.2 %
32 . Samoa	12 500.0	12 500.0	12 500.0	12 500.0	12 500.0	0.0 %
33 . Solomon Islands	16 666.7	16 153.9	16 428.6	16 428.6	16 428.6	-0.4 %
34 . Tonga	16 463.8	13 168.7	12 957.1	12 957.1	12 957.1	-2.1 %
35 . Vanuatu						
AVERAGE	12 421.9	12 518.5	12 106.9	12 511.6	12 505.3	0.5 %
DEVELOPED COUNTRIES						
36 . Australia						
37 . Japan						
38 . New Zealand						
AVERAGE						
ASIA & PACIFIC*	13 270.8	13 886.0	14 535.4	15 038.8	14 694.4	1.5 %
REST OF WORLD	8 672.4	9 423.1	9 587.6	9 588.3	9 694.7	1.1 %
WORLD	9 746.5	10 359.4	10 611.0	10 681.5	10 705.2	1.1 %

Table 29. Cassava : area harvested

Unit: 1000 ha

Country	1992	1999	2000	2001	2002	Annual Growth Rate 1992 - 2002
DEVELOPING COUNTRIES						
SOUTHEAST ASIA						
1 . Cambodia	16.0	14.0	15.4	13.6	18.2	2.8 %
2 . Indonesia	1 351.3	1 350.0	1 284.0	1 317.9	1 290.0 F	-0.7 %
3 . Lao PDR	5.0 F	5.2 F	5.2 F	5.2 F	5.2 F	0.5 %
4 . Malaysia	41.0 F	38.0 F	38.0 F	38.0 F	38.0 F	-1.1 %
5 . Myanmar	4.4	7.7	7.7	9.1	9.1 F	4.5 %
6 . Philippines	204.3	223.6	210.2	217.2	217.2 F	0.1 %
7 . Thailand	1 450.6	1 065.4	1 130.9	1 024.3	1 030.0 F	-3.7 %
8 . Viet Nam	283.8	225.4	237.6	263.9	329.9	-0.5 %
SOUTH ASIA						
9 . Bangladesh						
10 . Bhutan						
11 . India	250.9	268.0 F	270.0 F	270.0 F	270.0 F	1.5 %
12 . Maldives	.0 F	.0	.0	.0 F	.0 F	8.6 %
13 . Nepal						
14 . Pakistan						
15 . Sri Lanka	34.2	29.4	29.5	27.3	27.5 F	-2.3 %
CENTRAL ASIA						
16 . Kazakhstan						
17 . Tajikistan						
18 . Uzbekistan						
OTHER ASIA						
19 . China	230.5 F	235.1 F	238.1 F	240.1 F	240.1 F	0.5 %
20 . DPR Korea						
21 . Iran (Islamic Rep. of)						
22 . Mongolia						
23 . Rep.of Korea						
PACIFIC ISLANDS						
24 . Cook Islands	.12	.17 F	.17 F	.17 F	.17 F	1.8 %
25 . Fiji Islands	1.59	2.00 F	2.40 F	2.40 F	2.40 F	2.1 %
26 . Kiribati						
27 . Marshall Islands						
28 . Nauru						
29 . Niue	.01 F	.01 F	.01 F	.01 F	.01 F	0.0 %
30 . Palau						
31 . Papua New Guinea	10.60 *	11.00 *	11.00 *	11.50 F	11.50 F	0.9 %
32 . Samoa	.02 F	.02 F	.02 F	.02 F	.02 F	2.4 %
33 . Solomon Islands	.09 F	.13 F	.14 F	.14 F	.14 F	4.9 %
34 . Tonga	1.75 *	1.22 *	.70 F	.70 F	.70 F	-13.9 %
35 . Vanuatu						
SUB-TOTAL	3 886.2	3 476.4	3 481.0	3 441.5	3 490.1	-1.4 %
DEVELOPED COUNTRIES						
36 . Australia						
37 . Japan						
38 . New Zealand						
SUB-TOTAL						
ASIA & PACIFIC*	3 886.2	3 476.4	3 481.0	3 441.5	3 490.1	-1.4 %
REST OF WORLD	12 751.7	13 094.1	13 347.5	13 718.0	13 777.4	0.8 %
WORLD	16 637.9	16 570.5	16 828.5	17 159.5	17 267.5	0.3 %

Table 30. Sweet potatoes : production

Unit: 1000 MT

Country	1992	1999	2000	2001	2002	Annual Growth Rate 1992 - 2002
DEVELOPING COUNTRIES						
SOUTHEAST ASIA						
1 . Cambodia	60.0	32.5	28.2	26.3	25.5	-7.0 %
2 . Indonesia	2 171.0	1 665.5	1 828.0	1 749.0	1 746.3	-2.2 %
3 . Lao PDR	105.1	80.6	117.5	100.8	102.0 F	-1.6 %
4 . Malaysia	40.7 F	41.0 F	41.0 F	41.0 F	41.0 F	-0.1 %
5 . Myanmar	26.9 F	30.6	38.1	57.4	57.4 F	8.2 %
6 . Philippines	676.6	557.4	554.0	545.4	549.3	-2.9 %
7 . Thailand	98.0 F	100.1	90.9	97.4	97.4 F	0.0 %
8 . Viet Nam	2 593.0	1 744.6	1 611.3	1 655.1	1 725.1	-3.6 %
SOUTH ASIA						
9 . Bangladesh	470.2	383.0	378.0	357.0	346.0	-2.7 %
10 . Bhutan						
11 . India	1 130.7	1 152.4	1 007.4	1 200.0 F	1 200.0 F	-0.4 %
12 . Maldives	.0 *	.0	.0	.2	.2 F	20.6 %
13 . Nepal						
14 . Pakistan	5.6	9.3	9.1	9.2	9.1	5.2 %
15 . Sri Lanka	60.2	51.6	51.8	48.5	48.5 F	-2.4 %
CENTRAL ASIA						
16 . Kazakhstan						
17 . Tajikistan						
18 . Uzbekistan						
OTHER ASIA						
19 . China	104 637.4 *	126 143.7	118 175.9	113 785.1	114 289.1 *	0.7 %
20 . DPR Korea	288.0	490.0 *	290.0 *	320.0 F	340.0 F	8.4 %
21 . Iran (Islamic Rep. of)						
22 . Mongolia						
23 . Rep.of Korea	314.8	428.1	344.9	273.1	250.0 F	0.4 %
PACIFIC ISLANDS						
24 . Cook Islands	1.69 F	1.40 F	1.40 F	1.40 F	1.40 F	-2.6 %
25 . Fiji Islands	1.64	5.10	6.07	6.19 F	6.19 F	9.2 %
26 . Kiribati						
27 . Marshall Islands						
28 . Nauru						
29 . Niue	.25 F	.25 F	.25 F	.25 F	.25 F	0.1 %
30 . Palau						
31 . Papua New Guinea	475.00 *	480.00 *	480.00 *	490.00 F	490.00 F	0.5 %
32 . Samoa						
33 . Solomon Islands	60.00 F	75.00 F	79.00 F	84.00 F	84.00 F	3.4 %
34 . Tonga	3.84	3.08	8.00	5.50 F	5.50 F	1.0 %
35 . Vanuatu						
SUB-TOTAL	113 220.7	133 475.3	125 140.9	120 852.7	121 414.3	0.6 %
DEVELOPED COUNTRIES						
36 . Australia	5.9	6.0 F	6.0 F	6.0 F	6.0 F	-2.3 %
37 . Japan	1 295.0	1 008.0	1 073.4	1 063.0	1 030.0	-1.6 %
38 . New Zealand	19.4	17.0	17.5	16.0	16.0	-4.4 %
SUB-TOTAL	1 320.3	1 031.0	1 096.9	1 085.0	1 052.0	-1.7 %
ASIA & PACIFIC*	114 541.0	134 506.3	126 237.8	121 937.7	122 466.3	0.6 %
REST OF WORLD	9 105.4	12 163.6	12 730.1	13 662.1	13 664.1	4.5 %
WORLD	123 646.4	146 669.9	138 967.9	135 599.8	136 130.4	0.9 %

Table 31. Sweet potatoes : yield

Unit: kg/ha

Country	1992	1999	2000	2001	2002	Annual Growth Rate 1992 - 2002
DEVELOPING COUNTRIES						
SOUTHEAST ASIA						
1 . Cambodia	6 000.0	3 488.1	3 789.9	3 721.1	3 711.9	-4.1 %
2 . Indonesia	9 448.1	9 669.8	9 422.7	9 663.0	10 272.4	0.4 %
3 . Lao PDR	7 272.3	6 176.3	6 056.7	6 174.1	6 250.0	-2.5 %
4 . Malaysia	11 000.0	11 081.1	11 081.1	11 081.1	11 081.1	0.1 %
5 . Myanmar	5 380.0	5 649.2	5 741.6	6 701.9	6 701.9	2.5 %
6 . Philippines	4 806.5	4 211.5	4 338.8	4 379.3	4 394.6	-1.2 %
7 . Thailand	10 103.1	13 077.6	12 090.4	12 071.7	12 071.7	2.2 %
8 . Viet Nam	6 404.1	6 456.7	6 336.2	6 763.8	7 199.9	1.6 %
SOUTH ASIA						
9 . Bangladesh	9 647.7	9 278.6	9 247.9	9 090.7	9 091.9	-0.6 %
10 . Bhutan						
11 . India	8 283.5	8 574.4	8 836.8	8 888.9	8 888.9	0.7 %
12 . Maldives	221.4	1 655.2	816.3	2 250.0	2 250.0	31.3 %
13 . Nepal						
14 . Pakistan	10 436.8	11 233.9	10 977.1	10 416.8	10 038.6	0.5 %
15 . Sri Lanka	6 056.8	6 157.5	6 271.2	6 183.4	6 183.4	-0.8 %
CENTRAL ASIA						
16 . Kazakhstan						
17 . Tajikistan						
18 . Uzbekistan						
OTHER ASIA						
19 . China	16 710.0	21 215.0	20 289.9	20 661.0	19 018.9	1.6 %
20 . DPR Korea	14 400.0	13 424.7	12 608.7	11 428.6	11 333.3	-1.8 %
21 . Iran (Islamic Rep. of)						
22 . Mongolia						
23 . Rep.of Korea	20 075.2	21 288.2	21 356.2	21 473.4	20 833.3	1.1 %
PACIFIC ISLANDS						
24 . Cook Islands	30 727.3	28 000.0	28 000.0	28 000.0	28 000.0	0.2 %
25 . Fiji Islands	9 133.3	10 700.2	8 243.2	8 250.7	8 250.7	2.2 %
26 . Kiribati						
27 . Marshall Islands						
28 . Nauru						
29 . Niue	17 500.0	17 857.1	17 857.1	17 857.1	17 857.1	0.1 %
30 . Palau						
31 . Papua New Guinea	4 750.0	4 705.9	4 705.9	4 757.3	4 757.3	0.2 %
32 . Samoa						
33 . Solomon Islands	14 634.2	14 423.1	14 363.6	14 000.0	14 000.0	-0.5 %
34 . Tonga	12 371.0	12 369.5	12 345.7	12 222.2	12 222.2	0.7 %
35 . Vanuatu						
AVERAGE	10 698.2	10 940.6	10 671.7	10 728.9	10 655.0	0.4 %
DEVELOPED COUNTRIES						
36 . Australia	12 754.8	17 142.9	17 142.9	17 142.9	17 142.9	3.0 %
37 . Japan	23 502.7	22 651.7	24 732.7	25 130.0	24 523.8	1.1 %
38 . New Zealand	17 636.4	17 000.0	14 450.9	13 333.3	13 333.3	-5.3 %
AVERAGE	17 964.6	18 931.5	18 775.5	18 535.4	18 333.3	-0.4 %
ASIA & PACIFIC*	15 327.1	19 338.8	18 558.6	18 820.1	17 582.9	1.6 %
REST OF WORLD	5 287.9	5 451.3	5 121.5	5 103.7	4 879.5	-0.4 %
WORLD	13 447.1	15 965.6	14 962.5	14 810.0	13 940.1	0.6 %

Table 32. Sweet potatoes : area harvested

Unit: 1000 ha

Country	1992	1999	2000	2001	2002	Annual Growth Rate 1992 - 2002
DEVELOPING COUNTRIES						
SOUTHEAST ASIA						
1 . Cambodia	10.0	9.3	7.4	7.1	6.9	-3.1 %
2 . Indonesia	229.8	172.2	194.0	181.0	170.0 F	-2.6 %
3 . Lao PDR	14.5	13.1	19.4	16.3	16.3 F	0.9 %
4 . Malaysia	3.7 F	3.7 F	3.7 F	3.7 F	3.7 F	-0.2 %
5 . Myanmar	5.0 F	5.4	6.6	8.6	8.6 F	5.6 %
6 . Philippines	140.8	132.3	127.7	124.5	125.0 F	-1.7 %
7 . Thailand	9.7 F	7.7	7.5	8.1	8.1 F	-2.1 %
8 . Viet Nam	404.9	270.2	254.3	244.7	239.6	-5.1 %
SOUTH ASIA						
9 . Bangladesh	48.7	41.3	40.9	39.3	38.1	-2.1 %
10 . Bhutan						
11 . India	136.5	134.4	114.0	135.0 F	135.0 F	-1.1 %
12 . Maldives	.1 F	.0	.0	.1 F	.1 F	-8.2 %
13 . Nepal						
14 . Pakistan	.5	.8	.8	.9	.9	4.6 %
15 . Sri Lanka	9.9	8.4	8.3	7.9	7.9 F	-1.7 %
CENTRAL ASIA						
16 . Kazakhstan						
17 . Tajikistan						
18 . Uzbekistan						
OTHER ASIA						
19 . China	6 262.0 *	5 946.0	5 824.4	5 507.3	6 009.3 F	-0.8 %
20 . DPR Korea	20.0 F	36.5 F	23.0 F	28.0 F	30.0 F	10.3 %
21 . Iran (Islamic Rep. of)						
22 . Mongolia						
23 . Rep.of Korea	15.7	20.1	16.1	12.7	12.0 F	-0.8 %
PACIFIC ISLANDS						
24 . Cook Islands	.06	.05 F	.05 F	.05 F	.05 F	-2.8 %
25 . Fiji Islands	.18	.48	.74	.75 F	.75 F	6.9 %
26 . Kiribati						
27 . Marshall Islands						
28 . Nauru						
29 . Niue	.01 F	.01 F	.01 F	.01 F	.01 F	0.0 %
30 . Palau						
31 . Papua New Guinea	100.00 *	102.00 *	102.00 *	103.00 F	103.00 F	0.3 %
32 . Samoa						
33 . Solomon Islands	4.10 F	5.20 F	5.50 F	6.00 F	6.00 F	4.0 %
34 . Tonga	.31	.25	.65	.45 F	.45 F	0.3 %
35 . Vanuatu						
SUB-TOTAL	7 416.4	6 909.4	6 757.2	6 435.3	6 921.5	-1.0 %
DEVELOPED COUNTRIES						
36 . Australia	.5	.4 F	.4 F	.4 F	.4 F	-5.2 %
37 . Japan	55.1	44.5	43.4	42.3	42.0 F	-2.7 %
38 . New Zealand	1.1 F	1.0	1.2	1.2	1.2	1.0 %
SUB-TOTAL	56.7	45.9	45.0	43.9	43.6	-2.6 %
ASIA & PACIFIC*	7 473.1	6 955.3	6 802.1	6 479.1	6 965.1	-1.0 %
REST OF WORLD	1 721.9	2 231.3	2 485.6	2 676.9	2 800.3	4.9 %
WORLD	9 195.0	9 186.6	9 287.8	9 156.0	9 765.4	0.3 %

Table 33. Potatoes : production

Unit: 1000 MT

Country	1992	1999	2000	2001	2002	Annual Growth Rate 1992 - 2002
DEVELOPING COUNTRIES						
SOUTHEAST ASIA						
1 . Cambodia						
2 . Indonesia	702.6	924.1	977.3	954.3	850.0 F	1.5 %
3 . Lao PDR	35.0 *	33.0 *	33.0 *	34.0 F	35.0 F	0.2 %
4 . Malaysia						
5 . Myanmar	156.3	244.6	254.7	318.6	318.6 F	8.7 %
6 . Philippines	64.7	63.6	63.5	66.0	68.0 F	-1.6 %
7 . Thailand	30.0 F	100.1	90.9	84.1	84.1 F	12.9 %
8 . Viet Nam	259.3	330.0 F	316.0	340.0 F	377.5	3.0 %
SOUTH ASIA						
9 . Bangladesh	1 379.3	2 762.0	2 933.0	3 216.0	3 216.0 F	10.6 %
10 . Bhutan	34.1 F	34.1 F	34.1 F	34.1 F	22.0	-2.0 %
11 . India	16 387.9	23 610.7	24 713.2	22 142.7	24 000.0	4.7 %
12 . Maldives						
13 . Nepal	732.9	1 091.2	1 182.5	1 313.7	1 472.8	7.2 %
14 . Pakistan	859.8	1 810.4	1 868.4	1 666.1	1 721.6	8.3 %
15 . Sri Lanka	78.6	27.2	48.4	57.7	57.7 F	-6.9 %
CENTRAL ASIA						
16 . Kazakhstan	2 569.7	1 694.7	1 692.6	2 185.0	2 257.0	-1.5 %
17 . Tajikistan	167.4	239.6	303.2	318.0	400.0	11.4 %
18 . Uzbekistan	365.3	657.8	731.1	735.5	730.0 F	6.7 %
OTHER ASIA						
19 . China	37 826.2	56 141.1	66 325.2	64 596.1	65 052.1 *	5.5 %
20 . DPR Korea	867.0	1 473.0 *	1 870.0	2 268.0	1 884.0	17.5 %
21 . Iran (Islamic Rep. of)	2 708.3	3 433.1	3 658.0	3 485.8	3 500.0 F	2.1 %
22 . Mongolia	78.5	63.8	58.9	58.0	65.6	0.0 %
23 . Rep.of Korea	726.1	678.3	704.6	605.0	750.0 F	1.1 %
PACIFIC ISLANDS						
24 . Cook Islands						
25 . Fiji Islands	.09	.08 F	.08 F	.08 F	.08 F	2.8 %
26 . Kiribati						
27 . Marshall Islands						
28 . Nauru						
29 . Niue						
30 . Palau						
31 . Papua New Guinea	.34 F	.50 F	.54 F	.54 F	.54 F	5.1 %
32 . Samoa						
33 . Solomon Islands						
34 . Tonga						
35 . Vanuatu						
SUB-TOTAL	66 029.3	95 412.9	107 859.3	104 479.4	106 862.5	5.2 %
DEVELOPED COUNTRIES						
36 . Australia	1 150.1	1 326.8	1 199.6	1 250.0 F	1 260.0 F	1.2 %
37 . Japan	3 494.0	2 963.0	2 898.0	2 959.0	2 980.0 F	-1.9 %
38 . New Zealand	317.2	500.0	500.0	500.0	500.0	3.5 %
SUB-TOTAL	4 961.3	4 789.8	4 597.6	4 709.0	4 740.0	-0.6 %
ASIA & PACIFIC*	70 990.6	100 202.7	112 457.0	109 188.4	111 602.5	4.9 %
REST OF WORLD	205 790.3	200 694.9	216 904.2	202 654.8	195 838.0	-0.4 %
WORLD	276 780.9	300 897.6	329 361.2	311 843.2	307 440.4	1.2 %

Table 34. Potatoes : yield

Unit: kg/ha

Country	1992	1999	2000	2001	2002	Annual Growth Rate 1992 - 2002
DEVELOPING COUNTRIES						
SOUTHEAST ASIA						
1 . Cambodia						
2 . Indonesia	14 381.9	14 719.9	13 375.9	13 514.7	13 076.9	-1.7 %
3 . Lao PDR	7 000.0	6 600.0	6 226.4	6 181.8	6 363.6	-0.9 %
4 . Malaysia						
5 . Myanmar	10 148.2	10 438.2	9 902.0	10 866.2	10 866.2	1.0 %
6 . Philippines	13 017.7	12 129.7	12 279.9	12 390.4	12 363.6	-1.5 %
7 . Thailand	8 571.4	15 403.4	12 992.0	12 010.0	12 010.0	5.3 %
8 . Viet Nam	10 089.5	11 785.7	11 275.1	11 333.3	11 758.5	2.1 %
SOUTH ASIA						
9 . Bangladesh	10 793.1	11 281.0	12 059.1	12 916.3	12 916.3	1.8 %
10 . Bhutan	13 640.0	13 640.0	13 640.0	13 640.0	7 096.8	-2.9 %
11 . India	15 904.4	17 880.1	18 442.7	18 280.1	17 021.3	1.5 %
12 . Maldives						
13 . Nepal	8 591.6	9 259.9	9 643.6	10 182.4	10 901.8	2.2 %
14 . Pakistan	11 370.9	16 541.3	16 908.6	16 414.8	16 365.0	3.8 %
15 . Sri Lanka	11 010.8	12 520.7	13 292.2	13 571.8	13 571.8	2.3 %
CENTRAL ASIA						
16 . Kazakhstan	10 592.3	10 842.6	10 638.6	13 323.2	13 889.2	3.1 %
17 . Tajikistan	12 876.9	11 712.4	11 903.7	13 233.0	17 391.3	0.3 %
18 . Uzbekistan	8 509.2	13 562.9	14 005.8	14 478.4	14 313.7	5.1 %
OTHER ASIA						
19 . China	12 624.7	12 699.6	14 036.0	13 684.1	14 778.8	0.5 %
20 . DPR Korea	12 041.7	7 877.0	9 946.8	12 083.1	9 515.2	-1.4 %
21 . Iran (Islamic Rep. of)	16 287.9	20 929.5	21 662.9	19 968.9	20 000.0	0.7 %
22 . Mongolia	9 023.0	7 282.4	7 472.7	6 639.9	7 183.1	-1.0 %
23 . Rep.of Korea	20 987.7	24 525.6	23 954.6	24 502.9	30 000.0	2.2 %
PACIFIC ISLANDS						
24 . Cook Islands						
25 . Fiji Islands	8 454.5	8 000.0	8 000.0	8 000.0	8 000.0	2.1 %
26 . Kiribati						
27 . Marshall Islands						
28 . Nauru						
29 . Niue						
30 . Palau						
31 . Papua New Guinea	4 533.3	4 166.7	4 153.9	4 153.9	4 153.9	-1.3 %
32 . Samoa						
33 . Solomon Islands						
34 . Tonga						
35 . Vanuatu						
AVERAGE	11 384.1	12 445.4	12 536.9	12 789.5	12 888.0	1.1 %
DEVELOPED COUNTRIES						
36 . Australia	28 922.0	32 126.5	28 452.7	29 761.9	30 000.0	0.3 %
37 . Japan	31 364.5	30 327.5	30 634.3	31 817.2	30 408.2	-0.1 %
38 . New Zealand	39 650.0	41 666.7	42 315.5	50 000.0	50 000.0	1.1 %
AVERAGE	33 312.2	34 706.9	33 800.8	37 193.0	36 802.7	0.6 %
ASIA & PACIFIC*	13 737.3	14 087.7	15 050.9	14 864.7	15 400.8	0.6 %
REST OF WORLD	15 667.6	15 982.3	17 190.4	16 459.4	16 578.5	0.4 %
WORLD	15 122.6	15 297.2	16 394.7	15 863.5	16 130.7	0.3 %

Table 35. Potatoes : area harvested

Unit: 1000 ha

Country	1992	1999	2000	2001	2002	Annual Growth Rate 1992 - 2002
DEVELOPING COUNTRIES						
SOUTHEAST ASIA						
1 . Cambodia						
2 . Indonesia	48.9	62.8	73.1	70.6	65.0 F	3.2 %
3 . Lao PDR	5.0 F	5.0 F	5.3 F	5.5 F	5.5 F	1.2 %
4 . Malaysia						
5 . Myanmar	15.4	23.4	25.7	29.3	29.3 F	7.7 %
6 . Philippines	5.0	5.2	5.2	5.3	5.5 F	0.0 %
7 . Thailand	3.5 F	6.5 F	7.0 F	7.0 F	7.0 F	7.2 %
8 . Viet Nam	25.7	28.0 F	28.0	30.0 F	32.1	0.9 %
SOUTH ASIA						
9 . Bangladesh	127.8	244.8	243.2	249.0	249.0 F	8.6 %
10 . Bhutan	2.5 F	2.5 F	2.5 F	2.5 F	3.1	1.0 %
11 . India	1 030.4	1 320.5	1 340.0	1 211.3	1 410.0	3.1 %
12 . Maldives						
13 . Nepal	85.3	117.8	122.6	129.0	135.1	4.9 %
14 . Pakistan	75.6	109.4	110.5	101.5	105.2	4.4 %
15 . Sri Lanka	7.1	2.2	3.6	4.3	4.3 F	-9.0 %
CENTRAL ASIA						
16 . Kazakhstan	242.6	156.3	159.1	164.0	162.5	-4.5 %
17 . Tajikistan	13.0	20.5	25.5	24.0	23.0 F	11.1 %
18 . Uzbekistan	42.9	48.5	52.2	50.8	51.0 F	1.5 %
OTHER ASIA						
19 . China	2 996.2	4 420.7	4 725.4	4 720.5	4 401.7 F	5.0 %
20 . DPR Korea	72.0 F	187.0	188.0	187.7	198.0	19.1 %
21 . Iran (Islamic Rep. of)	166.3	164.0	168.9	174.6	175.0 F	1.4 %
22 . Mongolia	8.7	8.8	7.9	8.7	9.1	1.0 %
23 . Rep.of Korea	34.6	27.7	29.4	24.7	25.0 F	-1.1 %
PACIFIC ISLANDS						
24 . Cook Islands						
25 . Fiji Islands	.01	.01 F	.01 F	.01 F	.01 F	0.6 %
26 . Kiribati						
27 . Marshall Islands						
28 . Nauru						
29 . Niue						
30 . Palau						
31 . Papua New Guinea	.08 F	.12 F	.13 F	.13 F	.13 F	6.5 %
32 . Samoa						
33 . Solomon Islands						
34 . Tonga						
35 . Vanuatu						
SUB-TOTAL	5 008.6	6 961.8	7 323.2	7 200.5	7 096.5	4.4 %
DEVELOPED COUNTRIES						
36 . Australia	39.8	41.3	42.2	42.0 F	42.0 F	0.9 %
37 . Japan	111.4	97.7	94.6	93.0	98.0 F	-1.7 %
38 . New Zealand	8.0 F	12.0	11.8	10.0	10.0	2.4 %
SUB-TOTAL	159.2	151.0	148.6	145.0	150.0	-0.8 %
ASIA & PACIFIC*	5 167.7	7 112.8	7 471.8	7 345.5	7 246.5	4.3 %
REST OF WORLD	13 134.8	12 557.3	12 617.8	12 312.4	11 812.8	-0.7 %
WORLD	18 302.5	19 670.1	20 089.5	19 657.9	19 059.3	0.9 %

Table 36. Taro : production

Unit: 1000 MT

Country	1992	1999	2000	2001	2002	Annual Growth Rate 1992 - 2002
DEVELOPING COUNTRIES						
SOUTHEAST ASIA						
1 . Cambodia						
2 . Indonesia						
3 . Lao PDR						
4 . Malaysia						
5 . Myanmar						
6 . Philippines	96.6	97.3	95.9	96.9	96.9 F	1.8 %
7 . Thailand	56.0 F	56.0 F	56.0 F	61.6 F	61.6 F	1.0 %
8 . Viet Nam						
SOUTH ASIA						
9 . Bangladesh						
10 . Bhutan						
11 . India						
12 . Maldives	.8 F	.3	.2	.3	.3 F	-12.9 %
13 . Nepal						
14 . Pakistan						
15 . Sri Lanka						
CENTRAL ASIA						
16 . Kazakhstan						
17 . Tajikistan						
18 . Uzbekistan						
OTHER ASIA						
19 . China	1 276.2 F	1 493.1 F	1 540.7 F	1 547.6 F	1 547.6 F	2.1 %
20 . DPR Korea						
21 . Iran (Islamic Rep. of)						
22 . Mongolia						
23 . Rep.of Korea	.0	.0	.0	.0	.0	0.0 %
PACIFIC ISLANDS						
24 . Cook Islands						
25 . Fiji Islands	5.88	25.91	30.26	37.88	37.88 F	21.4 %
26 . Kiribati	1.40 F	1.60	1.60 F	1.70 F	1.70 F	1.9 %
27 . Marshall Islands						
28 . Nauru						
29 . Niue	3.00 F	3.20 F	3.20 F	3.20 F	3.20 F	0.3 %
30 . Palau						
31 . Papua New Guinea	205.00 F	170.00 F	172.00 F	174.00 F	174.00 F	-2.0 %
32 . Samoa	10.00 F	20.00 F	15.00	15.00	17.00	10.3 %
33 . Solomon Islands	28.80 F	32.00 F	34.00 F	36.00 F	36.00 F	3.1 %
34 . Tonga	12.58	3.24	3.72	3.70 F	3.70 F	-14.3 %
35 . Vanuatu						
SUB-TOTAL	1 696.2	1 902.6	1 952.6	1 977.9	1 979.9	1.8 %
DEVELOPED COUNTRIES						
36 . Australia						
37 . Japan	304.6	247.7	230.5	218.1	210.0 F	-2.9 %
38 . New Zealand						
SUB-TOTAL	304.6	247.7	230.5	218.1	210.0	-2.9 %
ASIA & PACIFIC*	2 000.8	2 150.3	2 183.1	2 196.0	2 189.9	1.2 %
REST OF WORLD	3 252.6	6 704.9	6 701.6	6 820.6	7 030.7	9.8 %
WORLD	5 253.5	8 855.1	8 884.8	9 016.6	9 220.5	7.1 %

Table 37. Taro : yield

Unit: kg/ha

Country	1992	1999	2000	2001	2002	Annual Growth Rate 1992 - 2002
DEVELOPING COUNTRIES						
SOUTHEAST ASIA						
1 . Cambodia						
2 . Indonesia						
3 . Lao PDR						
4 . Malaysia						
5 . Myanmar						
6 . Philippines	3 448.3	5 308.6	5 329.9	5 367.5	5 367.5	6.3 %
7 . Thailand	10 980.4	11 200.0	11 200.0	11 200.0	11 200.0	0.3 %
8 . Viet Nam						
SOUTH ASIA						
9 . Bangladesh						
10 . Bhutan						
11 . India						
12 . Maldives	10 000.0	5 075.5	2 353.7	5 800.0	5 800.0	-10.2 %
13 . Nepal						
14 . Pakistan						
15 . Sri Lanka						
CENTRAL ASIA						
16 . Kazakhstan						
17 . Tajikistan						
18 . Uzbekistan						
OTHER ASIA						
19 . China	15 153.9	17 431.8	17 799.1	17 812.6	17 812.6	1.6 %
20 . DPR Korea						
21 . Iran (Islamic Rep. of)						
22 . Mongolia						
23 . Rep.of Korea						
PACIFIC ISLANDS						
24 . Cook Islands						
25 . Fiji Islands	3 167.7	19 063.3	9 480.3	12 219.4	12 219.4	15.7 %
26 . Kiribati	4 000.0	4 210.5	4 210.5	4 250.0	4 250.0	0.6 %
27 . Marshall Islands						
28 . Nauru						
29 . Niue	6 976.7	7 441.9	7 441.9	7 441.9	7 441.9	0.3 %
30 . Palau						
31 . Papua New Guinea	6 406.3	5 483.9	5 375.0	5 437.5	5 437.5	-2.4 %
32 . Samoa	4 000.0	4 702.6	5 000.0	5 000.0	4 857.1	3.2 %
33 . Solomon Islands	22 153.9	20 000.0	20 000.0	20 000.0	20 000.0	-1.2 %
34 . Tonga	7 281.4	6 864.4	7 440.0	9 250.0	9 250.0	-0.4 %
35 . Vanuatu						
AVERAGE	7 797.4	8 898.5	7 969.2	8 648.2	8 636.3	0.5 %
DEVELOPED COUNTRIES						
36 . Australia						
37 . Japan	12 184.0	11 795.2	12 260.6	12 829.4	12 352.9	0.2 %
38 . New Zealand						
AVERAGE	12 184.0	11 795.2	12 260.6	12 829.4	12 352.9	0.2 %
ASIA & PACIFIC*	10 959.9	12 683.8	12 868.8	13 023.4	12 948.8	1.6 %
REST OF WORLD	4 131.2	5 236.7	5 227.8	5 237.7	5 012.1	2.7 %
WORLD	5 416.5	6 107.4	6 120.8	6 130.2	5 866.0	1.3 %

Table 38. Taro : area harvested

Unit: 1000 ha

Country	1992	1999	2000	2001	2002	Annual Growth Rate 1992 - 2002
DEVELOPING COUNTRIES						
SOUTHEAST ASIA						
1 . Cambodia						
2 . Indonesia						
3 . Lao PDR						
4 . Malaysia						
5 . Myanmar						
6 . Philippines	28.0 F	18.3	18.0	18.0	18.0 F	-4.3 %
7 . Thailand	5.1 F	5.0 F	5.0 F	5.5 F	5.5 F	0.8 %
8 . Viet Nam						
SOUTH ASIA						
9 . Bangladesh						
10 . Bhutan						
11 . India						
12 . Maldives	.1 F	.1	.1	.1 F	.1 F	-3.1 %
13 . Nepal						
14 . Pakistan						
15 . Sri Lanka						
CENTRAL ASIA						
16 . Kazakhstan						
17 . Tajikistan						
18 . Uzbekistan						
OTHER ASIA						
19 . China	84.2 F	85.7 F	86.6 F	86.9 F	86.9 F	0.5 %
20 . DPR Korea						
21 . Iran (Islamic Rep. of)						
22 . Mongolia						
23 . Rep.of Korea	.0	.0	.0	.0	.0	0.0 %
PACIFIC ISLANDS						
24 . Cook Islands						
25 . Fiji Islands	1.86	1.36	3.19	3.10	3.10 F	4.9 %
26 . Kiribati	.35 F	.38	.38 F	.40 F	.40 F	1.4 %
27 . Marshall Islands						
28 . Nauru						
29 . Niue	.43 F	.43 F	.43 F	.43 F	.43 F	0.0 %
30 . Palau						
31 . Papua New Guinea	32.00 F	31.00 F	32.00 F	32.00 F	32.00 F	0.5 %
32 . Samoa	2.50 F	4.25	3.00	3.00	3.50	6.8 %
33 . Solomon Islands	1.30 F	1.60 F	1.70 F	1.80 F	1.80 F	4.4 %
34 . Tonga	1.73	.47	.50 F	.40 F	.40 F	-14.0 %
35 . Vanuatu						
SUB-TOTAL	157.6	148.5	150.8	151.6	152.1	-0.1 %
DEVELOPED COUNTRIES						
36 . Australia						
37 . Japan	25.0	21.0	18.8	17.0 F	17.0 F	-3.1 %
38 . New Zealand						
SUB-TOTAL	25.0	21.0	18.8	17.0	17.0	-3.1 %
ASIA & PACIFIC*	182.6	169.5	169.6	168.6	169.1	-0.4 %
REST OF WORLD	787.3	1 280.4	1 281.9	1 302.2	1 402.7	6.9 %
WORLD	969.9	1 449.9	1 451.6	1 470.8	1 571.9	5.8 %

Table 39. Roots and tubers : production

Unit: 1000 MT

Country	1992	1999	2000	2001	2002	Annual Growth Rate 1992 - 2002
DEVELOPING COUNTRIES						
SOUTHEAST ASIA						
1 . Cambodia	226.0	279.5	194.9	188.5	232.3	4.5 %
2 . Indonesia	19 709.5	19 377.7	19 244.5	20 107.9	19 669.6	-0.1 %
3 . Lao PDR	207.1	184.6	221.5	205.8	207.0 F	-0.7 %
4 . Malaysia	520.7 F	469.0 F	466.0 F	465.0 F	455.0 F	-1.6 %
5 . Myanmar	223.9	363.3	370.1	472.8	472.8 F	8.1 %
6 . Philippines	2 801.5	2 823.6	2 697.8	2 569.6	2 575.5	-1.1 %
7 . Thailand	20 590.0	16 817.9	19 357.9	18 696.0	17 170.0	-1.2 %
8 . Viet Nam	5 420.2	3 875.1	3 913.6	4 801.3	6 260.3	-0.3 %
SOUTH ASIA						
9 . Bangladesh	1 849.5	3 145.0	3 311.0	3 573.0	3 562.0	8.3 %
10 . Bhutan	55.1 F	55.9 F	55.9 F	55.9 F	43.8	-1.0 %
11 . India	23 351.1	31 463.1	32 520.6	30 242.7	32 100.0	3.9 %
12 . Maldives	7.4	7.4	7.8	8.3	8.3 F	0.7 %
13 . Nepal	873.9	1 191.2	1 282.5	1 418.7	1 576.8	6.1 %
14 . Pakistan	1 212.9	2 239.7	2 307.5	2 115.3	2 170.7	6.9 %
15 . Sri Lanka	440.9	330.3	349.3	339.8	340.2 F	-3.5 %
CENTRAL ASIA						
16 . Kazakhstan	2 569.7	1 694.7	1 692.6	2 185.0	2 257.0	-1.5 %
17 . Tajikistan	167.4	239.6	303.2	318.0	400.0	11.4 %
18 . Uzbekistan	365.3	657.8	731.1	735.5	730.0 F	6.7 %
OTHER ASIA						
19 . China	147 121.2	187 542.5	189 856.8	183 794.6	184 754.6	2.2 %
20 . DPR Korea	1 155.0	1 963.0 *	2 160.0	2 588.0	2 224.0	15.7 %
21 . Iran (Islamic Rep. of)	2 708.3	3 433.1	3 658.0	3 485.8	3 500.0 F	2.1 %
22 . Mongolia	78.5	63.8	58.9	58.0	65.6	0.0 %
23 . Rep.of Korea	1 040.9	1 106.4	1 049.5	878.1	1 000.0	0.9 %
PACIFIC ISLANDS						
24 . Cook Islands	10.18	6.40 F	6.40 F	6.40 F	6.40 F	-3.2 %
25 . Fiji Islands	19.45	63.45	77.02	85.50	85.91 F	15.4 %
26 . Kiribati	7.60 F	8.80	8.60 F	8.90 F	8.90 F	1.9 %
27 . Marshall Islands						
28 . Nauru						
29 . Niue	3.40 F	3.61 F	3.61 F	3.61 F	3.61 F	0.3 %
30 . Palau						
31 . Papua New Guinea	1 270.34	1 260.50	1 279.54	1 301.54 F	1 301.54 F	0.3 %
32 . Samoa	14.05 F	25.60 F	20.60	20.60	22.70	7.7 %
33 . Solomon Islands	112.60 F	133.60 F	144.80 F	153.80 F	153.80 F	3.6 %
34 . Tonga	55.50	27.30	26.33	23.17 F	23.17 F	-11.4 %
35 . Vanuatu	38.00 F	44.00 F	45.00 F	45.00 F	45.00 F	2.3 %
SUB-TOTAL	234 227.0	280 897.4	287 422.8	280 952.2	283 426.5	2.0 %
DEVELOPED COUNTRIES						
36 . Australia	1 156.1	1 332.8	1 205.6	1 256.0 F	1 266.0 F	1.2 %
37 . Japan	5 334.4	4 486.7	4 478.6	4 516.1	4 496.0	-1.7 %
38 . New Zealand	336.6	517.0	517.5	516.0	516.0	3.2 %
SUB-TOTAL	6 827.1	6 336.5	6 201.7	6 288.1	6 278.0	-0.8 %
ASIA & PACIFIC*	241 054.4	287 234.2	293 624.8	287 240.6	289 704.8	1.9 %
REST OF WORLD	361 876.8	386 326.2	408 175.8	398 576.7	395 024.3	1.0 %
WORLD	602 931.1	673 560.4	701 800.6	685 817.3	684 729.1	1.4 %

Table 40. Roots and tubers : yield

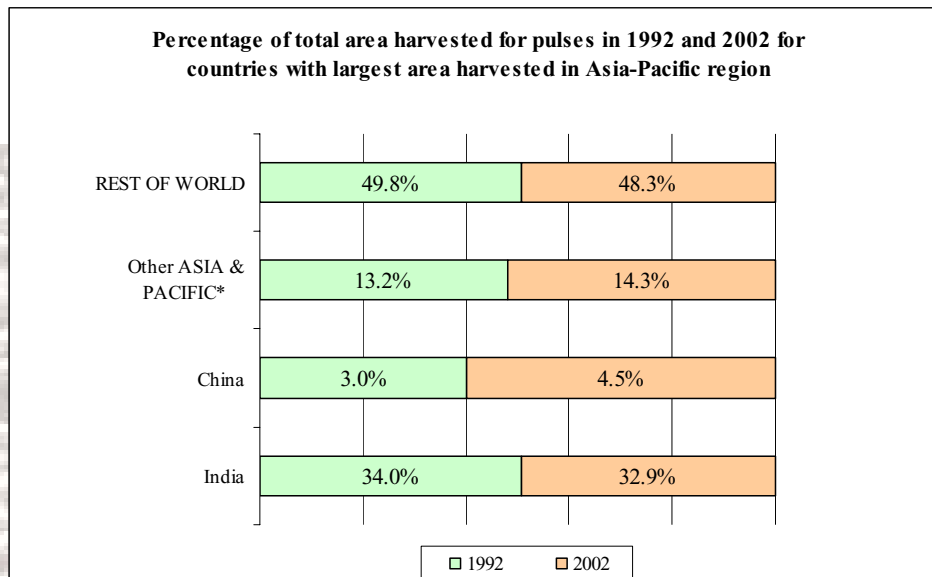
Unit: kg/ha

Country	1992	1999	2000	2001	2002	Annual Growth Rate 1992 - 2002
DEVELOPING COUNTRIES						
SOUTHEAST ASIA						
1 . Cambodia	8 370.4	11 214.8	7 968.2	8 436.5	8 675.8	3.7 %
2 . Indonesia	11 635.1	11 736.7	11 900.8	12 294.6	12 363.0	0.7 %
3 . Lao PDR	8 469.7	7 939.8	7 408.0	7 615.1	7 661.0	-1.5 %
4 . Malaysia	9 696.5	9 305.6	9 338.7	9 356.1	9 154.9	-0.6 %
5 . Myanmar	9 025.0	9 931.6	9 244.5	10 071.7	10 071.7	1.4 %
6 . Philippines	6 855.6	6 727.2	6 704.5	6 343.0	6 347.7	-0.7 %
7 . Thailand	13 977.7	15 442.0	16 760.1	17 812.8	16 270.8	2.5 %
8 . Viet Nam	7 587.1	7 400.9	7 527.2	8 914.4	10 406.0	2.5 %
SOUTH ASIA						
9 . Bangladesh	10 476.9	10 992.1	11 654.6	12 395.1	12 409.3	1.7 %
10 . Bhutan	10 596.2	10 750.0	10 750.0	10 750.0	7 551.7	-1.5 %
11 . India	16 470.0	18 261.7	18 863.5	18 711.1	17 686.0	1.4 %
12 . Maldives	4 516.9	4 620.6	4 448.1	4 595.6	4 595.6	-0.5 %
13 . Nepal	7 712.8	8 641.9	8 992.4	9 456.9	9 910.9	2.4 %
14 . Pakistan	12 453.4	16 556.8	16 864.1	16 450.8	16 406.5	2.8 %
15 . Sri Lanka	8 606.4	8 261.1	8 429.1	8 624.4	8 591.4	-0.6 %
CENTRAL ASIA						
16 . Kazakhstan	10 592.3	10 842.6	10 638.6	13 323.2	13 889.2	3.1 %
17 . Tajikistan	12 876.9	11 712.4	11 903.7	13 233.0	17 391.3	0.3 %
18 . Uzbekistan	8 509.2	13 562.9	14 005.8	14 478.4	14 313.7	5.1 %
OTHER ASIA						
19 . China	15 364.6	17 546.4	17 457.5	17 411.8	17 204.1	0.8 %
20 . DPR Korea	12 554.4	8 783.0	10 237.0	11 998.2	9 754.4	-1.6 %
21 . Iran (Islamic Rep. of)	16 287.9	20 929.5	21 662.9	19 968.9	20 000.0	0.7 %
22 . Mongolia	9 023.0	7 282.4	7 472.7	6 639.9	7 183.1	-1.0 %
23 . Rep.of Korea	20 703.1	23 162.7	23 033.6	23 472.9	27 027.0	1.9 %
PACIFIC ISLANDS						
24 . Cook Islands	29 507.3	20 000.0	20 000.0	20 000.0	20 000.0	-2.5 %
25 . Fiji Islands	3 160.7	12 073.8	9 705.7	10 773.1	10 825.7	15.5 %
26 . Kiribati	7 835.1	8 148.2	8 113.2	8 090.9	8 090.9	0.4 %
27 . Marshall Islands						
28 . Nauru						
29 . Niue	5 873.9	6 206.5	6 206.5	6 206.5	6 206.5	0.3 %
30 . Palau						
31 . Papua New Guinea	7 369.6	7 218.5	7 223.7	7 245.7	7 245.7	-0.2 %
32 . Samoa	4 296.6	4 869.7	5 144.9	5 144.9	5 017.7	2.0 %
33 . Solomon Islands	18 016.0	16 847.4	16 955.5	16 645.0	16 645.0	-0.8 %
34 . Tonga	11 964.4	12 106.4	11 968.2	11 821.4	11 821.4	-0.7 %
35 . Vanuatu	8 444.4	8 800.0	8 181.8	8 181.8	8 181.8	-0.2 %
AVERAGE	10 900.9	11 496.1	11 461.4	11 764.5	11 840.6	0.9 %
DEVELOPED COUNTRIES						
36 . Australia	28 735.1	32 000.6	28 359.6	29 657.6	29 893.7	0.4 %
37 . Japan	25 892.6	25 362.9	26 138.7	27 205.4	26 338.6	0.4 %
38 . New Zealand	36 989.0	39 769.2	39 725.2	46 071.4	46 071.4	0.9 %
AVERAGE	30 538.9	32 377.6	31 407.8	34 311.5	34 101.3	0.6 %
ASIA & PACIFIC*	14 239.4	16 011.7	16 173.9	16 260.2	16 002.0	1.1 %
REST OF WORLD	11 340.1	11 367.6	11 791.6	11 345.7	11 272.5	-0.1 %
WORLD	12 345.0	12 972.1	13 299.2	12 990.1	12 883.6	0.4 %

Table 41. Roots and tubers : area harvested

Unit: 1000 ha

Country	1992	1999	2000	2001	2002	Annual Growth Rate 1992 - 2002
DEVELOPING COUNTRIES						
SOUTHEAST ASIA						
1 . Cambodia	27.0	24.9	24.5	22.3	26.8	0.8 %
2 . Indonesia	1 694.0	1 651.0	1 617.1	1 635.5	1 591.0	F -0.8 %
3 . Lao PDR	24.5	23.3	29.9	27.0	27.0	F 0.9 %
4 . Malaysia	53.7	50.4	49.9	49.7	49.7	F -1.1 %
5 . Myanmar	24.8	36.6	40.0	46.9	46.9	F 6.6 %
6 . Philippines	408.6	419.7	402.4	405.1	405.7	F -0.4 %
7 . Thailand	1 473.1	1 089.1	1 155.0	1 049.6	1 055.3	F -3.6 %
8 . Viet Nam	714.4	523.6	519.9	538.6	601.6	-2.7 %
SOUTH ASIA						
9 . Bangladesh	176.5	286.1	284.1	288.3	287.0	6.4 %
10 . Bhutan	5.2	5.2	5.2	5.2	5.8	F 0.5 %
11 . India	1 417.8	1 722.9	1 724.0	1 616.3	1 815.0	2.5 %
12 . Maldives	1.6	1.6	1.7	1.8	1.8	F 1.2 %
13 . Nepal	113.3	137.8	142.6	150.0	159.1	3.5 %
14 . Pakistan	97.4	135.3	136.8	128.6	132.3	3.9 %
15 . Sri Lanka	51.2	40.0	41.4	39.4	39.6	F -2.9 %
CENTRAL ASIA						
16 . Kazakhstan	242.6	156.3	159.1	164.0	162.5	-4.5 %
17 . Tajikistan	13.0	20.5	25.5	24.0	23.0	F 11.1 %
18 . Uzbekistan	42.9	48.5	52.2	50.8	51.0	F 1.5 %
OTHER ASIA						
19 . China	9 575.3	10 688.4	10 875.4	10 555.8	10 739.0	F 1.4 %
20 . DPR Korea	92.0	223.5	211.0	215.7	228.0	F 17.6 %
21 . Iran (Islamic Rep. of)	166.3	164.0	168.9	174.6	175.0	F 1.4 %
22 . Mongolia	8.7	8.8	7.9	8.7	9.1	1.0 %
23 . Rep. of Korea	50.3	47.8	45.6	37.4	37.0	-1.0 %
PACIFIC ISLANDS						
24 . Cook Islands	.35	.32	.32	.32	.32	F -0.7 %
25 . Fiji Islands	6.16	5.26	7.94	7.94	7.94	F -0.1 %
26 . Kiribati	.97	1.08	1.06	1.10	1.10	F 1.5 %
27 . Marshall Islands						
28 . Nauru						
29 . Niue	.58	.58	.58	.58	.58	F 0.0 %
30 . Palau						
31 . Papua New Guinea	172.38	174.62	177.13	179.63	179.63	F 0.5 %
32 . Samoa	3.27	5.26	4.00	4.00	4.52	F 5.5 %
33 . Solomon Islands	6.25	7.93	8.54	9.24	9.24	F 4.5 %
34 . Tonga	4.64	2.26	2.20	1.96	1.96	F -10.8 %
35 . Vanuatu	4.50	5.00	5.50	5.50	5.50	F 2.5 %
SUB-TOTAL	16 673.3	17 707.5	17 927.3	17 445.7	17 880.1	0.8 %
DEVELOPED COUNTRIES						
36 . Australia	40.2	41.6	42.5	42.4	42.4	F 0.8 %
37 . Japan	206.0	176.9	171.3	166.0	170.7	F -2.0 %
38 . New Zealand	9.1	13.0	13.0	11.2	11.2	F 2.2 %
SUB-TOTAL	255.4	231.5	226.9	219.6	224.3	-1.4 %
ASIA & PACIFIC*	16 928.7	17 939.1	18 154.2	17 665.2	18 104.4	0.8 %
REST OF WORLD	31 911.4	33 984.9	34 615.9	35 130.4	35 043.1	1.1 %
WORLD	48 840.0	51 923.9	52 770.1	52 795.6	53 147.5	1.0 %



STAPLE FOOD CROPS

C. Pulses

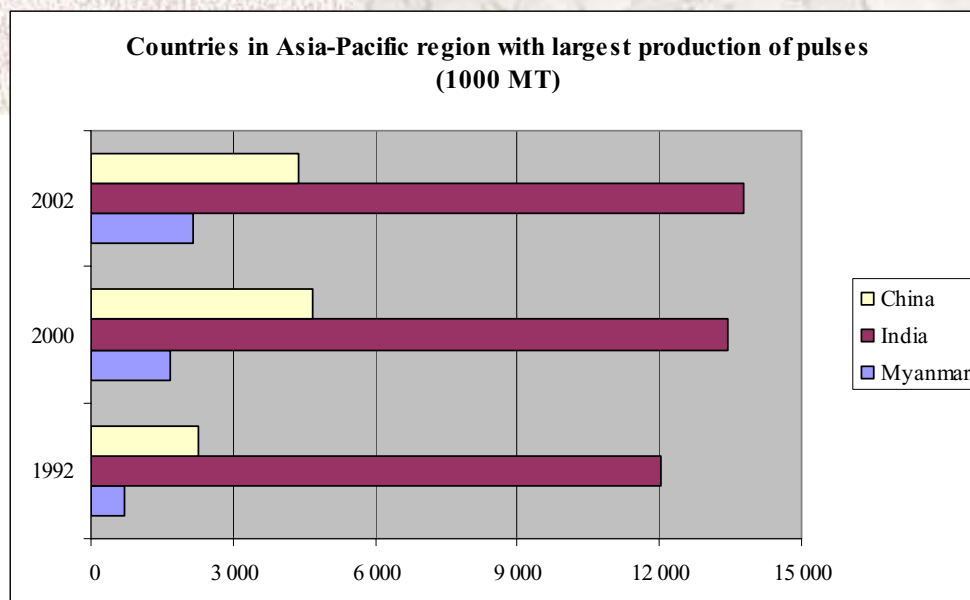


Table 42. Pulses : production

Unit: 1000 MT

Country	1992	1999	2000	2001	2002	Annual Growth Rate 1992 - 2002
DEVELOPING COUNTRIES						
SOUTHEAST ASIA						
1 . Cambodia	14.0	15.9	15.1	17.2	19.6	2.1 %
2 . Indonesia	852.8	266.0	290.9	302.0	305.3	-11.6 %
3 . Lao PDR	13.2	14.8	14.6	16.6	17.0 F	2.5 %
4 . Malaysia						
5 . Myanmar	691.1	1 544.5	1 665.2	2 140.7	2 140.7 F	11.9 %
6 . Philippines	57.9	58.2	56.0	55.7	55.7 F	-0.8 %
7 . Thailand	313.4	301.4	281.9	293.7	316.0	-0.2 %
8 . Viet Nam	187.6	245.1	244.6	242.0	236.9	2.4 %
SOUTH ASIA						
9 . Bangladesh	519.6	385.7	383.0	367.0	346.0	-4.5 %
10 . Bhutan	1.6 F	1.6 F	1.6 F	1.6 F	1.6 F	0.0 %
11 . India	12 013.4	14 958.5	13 447.0	10 655.2	13 772.8	0.1 %
12 . Maldives	.0 F	.1 F	.1 F	.1 F	.1 F	4.6 %
13 . Nepal	157.0	211.0	220.5	225.8	230.4	2.8 %
14 . Pakistan	939.7	1 088.9	935.2	761.1	721.2	-0.5 %
15 . Sri Lanka	41.1	25.9	23.8	22.0	22.0 F	-7.3 %
CENTRAL ASIA						
16 . Kazakhstan	113.7 *	16.1 *	17.9	24.6	32.3	-14.7 %
17 . Tajikistan	8.5	8.1	5.2	5.7	5.2 *	-0.7 %
18 . Uzbekistan	6.3	16.0	15.0	13.0	29.6 *	15.4 %
OTHER ASIA						
19 . China	2 273.3 F	4 704.4 *	4 696.5 *	5 121.5 *	4 372.0 F	3.7 %
20 . DPR Korea	310.0 F	280.0 F	290.0 F	300.0 F	300.0 F	0.1 %
21 . Iran (Islamic Rep. of)	673.9	471.0	561.6	558.2	551.0 F	-2.5 %
22 . Mongolia	1.2	1.2 F	1.0 F	1.1 F	1.1 F	-1.0 %
23 . Rep. of Korea	37.2	30.3	28.7	32.0	32.0 F	-0.7 %
PACIFIC ISLANDS						
24 . Cook Islands						
25 . Fiji Islands	.66	1.20 F	1.20 F	1.20 F	1.20 F	11.3 %
26 . Kiribati						
27 . Marshall Islands						
28 . Nauru						
29 . Niue						
30 . Palau						
31 . Papua New Guinea	2.15 F	2.40 F	2.50 F	2.70 F	2.70 F	2.2 %
32 . Samoa						
33 . Solomon Islands	2.50 F	3.50 F	3.50 F	3.80 F	3.80 F	4.3 %
34 . Tonga						
35 . Vanuatu						
SUB-TOTAL	19 231.9	24 651.9	23 202.6	21 164.4	23 516.1	0.9 %
DEVELOPED COUNTRIES						
36 . Australia	2 009.7	2 987.6	2 152.0	2 507.0	1 359.0	-0.4 %
37 . Japan	105.5	103.2	104.3	95.8	101.1	0.0 %
38 . New Zealand	81.3	53.2	65.0	40.0	26.3	-6.7 %
SUB-TOTAL	2 196.5	3 144.0	2 321.3	2 642.8	1 486.4	-0.6 %
ASIA & PACIFIC*	21 428.4	27 795.9	25 523.9	23 807.2	25 002.5	0.8 %
REST OF WORLD	29 273.6	28 826.8	29 012.9	29 217.2	30 162.3	-0.2 %
WORLD	50 702.0	56 622.7	54 536.8	53 024.4	55 164.8	0.3 %

Table 43. Pulses : yield

Unit: kg/ha

Country	1992	1999	2000	2001	2002	Annual Growth Rate 1992 - 2002
DEVELOPING COUNTRIES						
SOUTHEAST ASIA						
1 . Cambodia	583.3	595.0	659.5	632.8	614.6	0.5 %
2 . Indonesia	1 510.9	886.7	941.4	909.7	543.2	-8.5 %
3 . Lao PDR	835.8	953.3	967.0	1 015.2	1 039.1	2.0 %
4 . Malaysia						
5 . Myanmar	656.4	714.8	710.7	755.6	755.6	1.8 %
6 . Philippines	906.1	763.8	724.9	723.5	723.5	-2.6 %
7 . Thailand	781.1	839.6	841.4	838.3	972.3	1.4 %
8 . Viet Nam	623.1	728.6	710.2	711.8	716.4	1.4 %
SOUTH ASIA						
9 . Bangladesh	722.9	757.5	772.5	787.1	732.0	0.5 %
10 . Bhutan	800.0	800.0	800.0	800.0	800.0	0.0 %
11 . India	532.9	636.6	636.2	529.9	599.5	0.5 %
12 . Maldives	631.6	777.8	777.8	777.8	777.8	2.6 %
13 . Nepal	586.3	740.5	772.3	790.8	806.8	3.4 %
14 . Pakistan	550.5	648.3	597.6	509.9	476.3	0.8 %
15 . Sri Lanka	590.1	908.3	919.1	906.3	906.3	2.6 %
CENTRAL ASIA						
16 . Kazakhstan	812.1	925.3	886.1	833.9	787.1	2.6 %
17 . Tajikistan	690.5	616.4	542.1	661.1	605.9	1.2 %
18 . Uzbekistan	572.7	2 000.0	2 001.3	2 001.5	4 417.9	19.0 %
OTHER ASIA						
19 . China	1 125.7	1 454.8	1 398.0	1 350.6	1 384.9	0.7 %
20 . DPR Korea	873.2	848.5	852.9	857.1	857.1	0.2 %
21 . Iran (Islamic Rep. of)	601.2	503.9	552.9	487.6	484.2	-2.5 %
22 . Mongolia	461.5	800.0	833.3	880.0	880.0	6.4 %
23 . Rep.of Korea	1 193.2	1 101.9	1 030.6	1 180.9	1 180.9	0.4 %
PACIFIC ISLANDS						
24 . Cook Islands						
25 . Fiji Islands	1 390.7	1 200.0	1 200.0	1 200.0	1 200.0	0.2 %
26 . Kiribati						
27 . Marshall Islands						
28 . Nauru						
29 . Niue						
30 . Palau						
31 . Papua New Guinea	500.0	500.0	500.0	500.0	500.0	0.0 %
32 . Samoa						
33 . Solomon Islands	1 250.0	1 296.3	1 296.3	1 310.3	1 310.3	0.8 %
34 . Tonga						
35 . Vanuatu						
AVERAGE	791.3	879.9	877.0	878.1	962.9	1.7 %
DEVELOPED COUNTRIES						
36 . Australia	1 131.7	1 340.5	965.0	1 248.4	737.7	-1.1 %
37 . Japan	1 503.3	1 764.7	1 830.5	1 660.9	1 752.8	2.8 %
38 . New Zealand	3 232.6	3 070.5	3 170.7	2 963.0	2 287.0	-1.4 %
AVERAGE	1 955.9	2 058.6	1 988.7	1 957.4	1 592.5	-0.2 %
ASIA & PACIFIC*	643.5	768.8	749.5	704.3	692.6	0.5 %
REST OF WORLD	886.8	858.8	883.6	876.0	895.6	-0.4 %
WORLD	764.6	812.1	815.3	789.6	790.6	0.0 %

Table 44. Pulses : area harvested

Unit: 1000 ha

Country	1992	1999	2000	2001	2002	Annual Growth Rate 1992 - 2002
DEVELOPING COUNTRIES						
SOUTHEAST ASIA						
1 . Cambodia	24.0	26.7	22.9	27.1	31.9	1.6 %
2 . Indonesia	564.5	300.0	309.0	332.0 F	562.0 F	-3.3 %
3 . Lao PDR	15.8	15.5	15.1	16.4	16.4 F	0.5 %
4 . Malaysia						
5 . Myanmar	1 052.9	2 160.8	2 343.1	2 833.1	2 833.1 F	9.9 %
6 . Philippines	63.9	76.2	77.2	77.0 F	77.0 F	1.8 %
7 . Thailand	401.2	359.0	335.0	350.3	325.0	-1.6 %
8 . Viet Nam	301.1	336.4	344.4	340.0	330.7	1.0 %
SOUTH ASIA						
9 . Bangladesh	718.9	509.2	495.8	466.3	472.7	-5.1 %
10 . Bhutan	2.0 F	2.0 F	2.0 F	2.0 F	2.0 F	0.0 %
11 . India	22 542.0	23 497.6	21 137.9	20 107.8	22 973.3	-0.4 %
12 . Maldives	.1 F	.1 F	.1 F	.1 F	.1 F	2.0 %
13 . Nepal	267.8	285.0	285.6	285.5	285.6	-0.6 %
14 . Pakistan	1 707.0	1 679.8	1 565.0	1 492.6	1 514.3	-1.3 %
15 . Sri Lanka	69.6	28.5	25.9	24.3	24.3 F	-9.6 %
CENTRAL ASIA						
16 . Kazakhstan	140.0 *	17.4 *	20.2 *	29.5	41.0	-16.8 %
17 . Tajikistan	12.3	13.2	9.6	8.5	8.5 F	-1.9 %
18 . Uzbekistan	11.0	8.0	7.5 *	6.5 *	6.7	-3.0 %
OTHER ASIA						
19 . China	2 019.5 F	3 233.7 *	3 359.5 *	3 792.1 *	3 156.9 F	3.0 %
20 . DPR Korea	355.0 F	330.0 F	340.0 F	350.0 F	350.0 F	-0.1 %
21 . Iran (Islamic Rep. of)	1 120.8	934.7	1 015.9	1 144.8	1 138.0 F	-0.1 %
22 . Mongolia	2.6	1.5 F	1.2 F	1.3 F	1.3 F	-7.0 %
23 . Rep.of Korea	31.2	27.5	27.8	27.1	27.1 F	-1.1 %
PACIFIC ISLANDS						
24 . Cook Islands						
25 . Fiji Islands	.47	1.00 F	1.00 F	1.00 F	1.00 F	11.1 %
26 . Kiribati						
27 . Marshall Islands						
28 . Nauru						
29 . Niue						
30 . Palau						
31 . Papua New Guinea	4.30 F	4.80 F	5.00 F	5.40 F	5.40 F	2.2 %
32 . Samoa						
33 . Solomon Islands	2.00 F	2.70 F	2.70 F	2.90 F	2.90 F	3.5 %
34 . Tonga						
35 . Vanuatu						
SUB-TOTAL	31 429.9	33 851.3	31 749.4	31 723.5	34 187.0	0.3 %
DEVELOPED COUNTRIES						
36 . Australia	1 775.9	2 228.8	2 230.0	2 008.2	1 842.2	0.7 %
37 . Japan	70.2	58.5	57.0	57.7	57.7	-2.7 %
38 . New Zealand	25.1	17.3	20.5	13.5	11.5	-5.4 %
SUB-TOTAL	1 871.2	2 304.6	2 307.5	2 079.4	1 911.4	0.5 %
ASIA & PACIFIC*	33 301.1	36 156.0	34 056.9	33 802.9	36 098.4	0.3 %
REST OF WORLD	33 012.3	33 565.6	32 836.4	33 352.1	33 679.5	0.3 %
WORLD	66 313.4	69 721.6	66 893.3	67 154.9	69 777.9	0.3 %