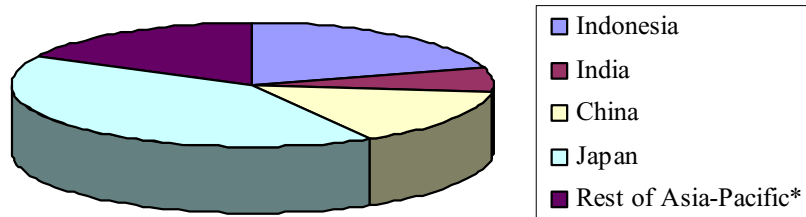


Sources of wood pulp production (2001) in Asia-Pacific region as percentage of metric tons



FORESTRY

Countries in Asia-Pacific region with the largest value (US\$1000) of exports of forestry products in 2001

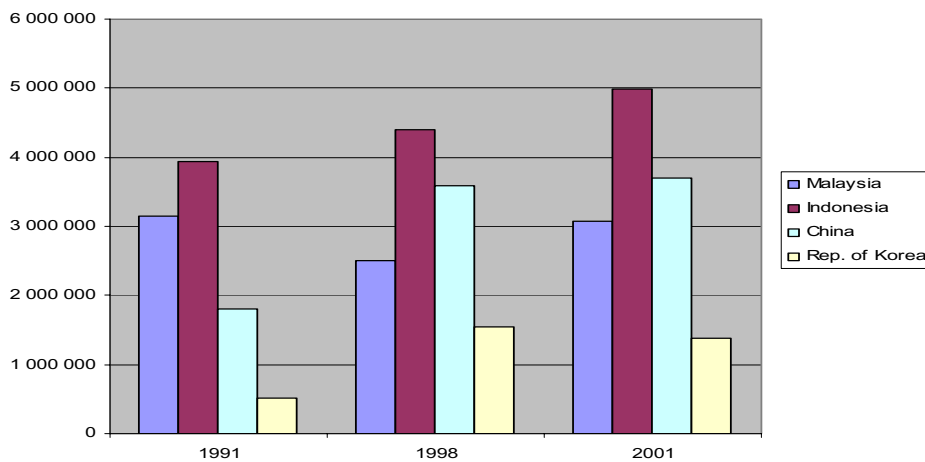


Table 139. Roundwood : production

Unit: 1000 CUM

Country	1991	1998	1999	2000	2001	Annual Growth Rate 1991 - 2001
DEVELOPING COUNTRIES						
SOUTHEAST ASIA						
1 . Cambodia	11 916.5 F	11 560.5 F	11 236.6	10 298.4	10 045.3	-1.49 %
2 . Indonesia	162 766.1	135 607.5	130 213.4	122 477.6	119 208.6	-3.0 %
3 . Lao PDR	6 316.1	6 385.6 F	6 708.8 F	6 439.0	6 455.0	0.5 %
4 . Malaysia	45 311.7	26 425.6	26 618.9	18 440.7	16 346.5	-9.7 %
5 . Myanmar	21 514.0	34 260.0	37 571.0	38 083.0	39 365.0	8.0 %
6 . Philippines	18 859.1	41 978.0	42 981.0	44 029.0	44 384.0	12.7 %
7 . Thailand	24 495.0	23 420.8	23 445.6	26 814.5	27 497.3	0.8 %
8 . Viet Nam	31 554.4	31 033.0	30 220.3	30 868.6	30 798.2 F	-0.3 %
SOUTH ASIA						
9 . Bangladesh	28 581.8	28 468.0	28 465.9	28 458.9	28 421.7	-0.1 %
10 . Bhutan	3 930.5	4 110.7 F	4 281.5	4 354.8	4 417.7 F	1.2 %
11 . India	306 235.0	296 298.0	296 681.0	296 234.0	296 234.0	-0.6 %
12 . Maldives						
13 . Nepal	12 966.4	13 853.5	13 938.5	14 022.7	14 004.2	0.9 %
14 . Pakistan	23 791.0	31 844.0	33 055.0	33 560.0	33 232.0	4.4 %
15 . Sri Lanka	9 862.7	6 635.5	6 591.2	6 582.6	6 533.9	-5.4 %
CENTRAL ASIA						
16 . Kazakhstan						
17 . Tajikistan						
18 . Uzbekistan		33.2	25.0	25.0 F	25.0 F	-8.2 %
OTHER ASIA						
19 . China	282 440.8	298 489.4	291 412.6	287 471.8	284 910.0	-0.1 %
20 . DPR Korea	5 082.9	6 856.4 F	6 929.3 F	7 002.9 F	7 061.0 F	3.9 %
21 . Iran (Islamic Rep. of)	1 495.0	1 286.0	1 149.0	1 114.0	1 323.9	-2.5 %
22 . Mongolia	894.0 F	631.0 F	631.0 F	631.0 F	631.0 F	-3.8 %
23 . Rep. of Korea	3 948.5	3 866.3	4 138.1	4 041.2	3 986.8	0.6 %
PACIFIC ISLANDS						
24 . Cook Islands	.0	5.0 F	5.0 F	5.0 F	5.0 F	0.0 %
25 . Fiji Islands	306.8	516.0	465.0	486.0	510.0	3.4 %
26 . Kiribati						
27 . Marshall Islands						
28 . Nauru						
29 . Niue						
30 . Palau						
31 . Papua New Guinea	8 188.0	8 597.0	8 597.0	8 597.0	8 597.0	0.3 %
32 . Samoa	131.0 F	131.0 F	131.0 F	131.0 F	131.0 F	0.0 %
33 . Solomon Islands	468.0	872.0 F	872.0 F	872.0 F	692.0	6.2 %
34 . Tonga	4.6 F	3.9	2.1	2.1 F	2.1 F	-8.5 %
35 . Vanuatu	63.2 F	57.8	132.0	131.0	119.0	7.7 %
SUB-TOTAL	1 011 123.0	1 013 226.0	1 006 498.0	991 173.8	984 937.4	-0.3 %
DEVELOPED COUNTRIES						
36 . Australia	20 390.5	26 820.9	26 561.4	30 374.8	30 915.3	4.2 %
37 . Japan	28 106.0	19 580.0	19 045.0	18 120.6	16 236.5	-5.1 %
38 . New Zealand	14 318.0	15 302.0	17 686.0	19 279.0	20 523.0	2.7 %
SUB-TOTAL	62 814.5	61 702.9	63 292.4	67 774.4	67 674.9	0.5 %
ASIA & PACIFIC*	1 073 938.0	1 074 929.0	1 069 790.0	1 058 948.0	1 052 612.0	-0.2 %
REST OF WORLD	2 198 497.0	2 148 630.0	2 257 300.0	2 341 313.0	2 292 616.0	0.8 %
WORLD	3 272 434.0	3 223 558.0	3 327 090.0	3 400 261.0	3 345 228.0	0.5 %

Table 140. Fuelwood and charcoal : production

Unit: 1000 CUM

Country	1991	1998	1999	2000	2001	Annual Growth Rate 1991 - 2001
DEVELOPING COUNTRIES						
SOUTHEAST ASIA						
1 . Cambodia	11 176.5 F	10 520.5 F	10 315.6 F	10 119.4 F	9 924.3 F	-1.2 %
2 . Indonesia	120 775.6 F	91 892.0 F	90 417.0 F	88 981.1 F	85 712.1 F	-3.3 %
3 . Lao PDR	5 679.1 F	5 814.6 F	5 842.8 F	5 872.0 F	5 885.0 F	0.4 %
4 . Malaysia	3 930.7 F	3 413.6 F	3 381.9 F	3 345.7 F	3 285.5 F	-1.8 %
5 . Myanmar	17 501.0 F	32 150.0	34 223.0	34 471.0	35 403.0	9.4 %
6 . Philippines	15 063.1 F	39 156.0 F	40 011.0 F	40 950.0	41 699.0	14.7 %
7 . Thailand	21 629.0 F	20 548.8 F	20 547.6 F	20 552.5 F	20 396.3 F	-0.6 %
8 . Viet Nam	26 708.4 F	26 707.0 F	26 695.3 F	26 685.6 F	26 615.2 F	-0.1 %
SOUTH ASIA						
9 . Bangladesh	27 875.8 F	27 851.0 F	27 842.9 F	27 835.9 F	27 798.7 F	0.0 %
10 . Bhutan	3 869.7 F	4 065.7 F	4 142.5 F	4 220.8 F	4 283.7 F	1.1 %
11 . India	281 734.0 F	277 380.0 F	277 380.0 F	277 380.0 F	277 380.0 F	-0.4 %
12 . Maldives						
13 . Nepal	12 346.4 F	12 593.5 F	12 678.5 F	12 762.7 F	12 744.2 F	0.3 %
14 . Pakistan	21 370.0 F	29 515.0	30 670.0	30 880.0	30 553.0	4.7 %
15 . Sri Lanka	9 226.0	6 004.5 F	5 955.2 F	5 906.6 F	5 839.9 F	-5.9 %
CENTRAL ASIA						
16 . Kazakhstan		.0 F	.0 F	.0 F	.0 F	-6.6 %
17 . Tajikistan						
18 . Uzbekistan		24.3	19.0	19.0 F	19.0 F	-7.1 %
OTHER ASIA						
19 . China	192 341.8 F	191 052.5 F	191 051.6 F	191 050.8 F	191 049.0 F	-0.4 %
20 . DPR Korea	4 482.9 F	5 356.4 F	5 429.3 F	5 502.9 F	5 561.0 F	2.2 %
21 . Iran (Islamic Rep. of)	363.0	227.0	189.0	54.0	263.9 F	-10.2 %
22 . Mongolia	263.0 F	186.0 F	186.0 F	186.0 F	186.0 F	-3.8 %
23 . Rep. of Korea	2 662.5 F	2 438.3 F	2 444.1	2 449.2 F	2 453.8 F	-0.8 %
PACIFIC ISLANDS						
24 . Cook Islands						
25 . Fiji Islands	37.0 F	37.0 F	37.0 F	37.0 F	37.0 F	0.0 %
26 . Kiribati						
27 . Marshall Islands						
28 . Nauru						
29 . Niue						
30 . Palau						
31 . Papua New Guinea	5 533.0 F	5 533.0 F	5 533.0 F	5 533.0 F	5 533.0 F	0.0 %
32 . Samoa	70.0 F	70.0 F	70.0 F	70.0 F	70.0 F	0.0 %
33 . Solomon Islands	138.0 F	138.0 F	138.0 F	138.0 F	138.0 F	0.0 %
34 . Tonga						
35 . Vanuatu	24.0 F	24.0 F	91.0	91.0	91.0	15.7 %
SUB-TOTAL	784 800.4	792 698.6	795 291.1	795 094.1	792 921.9	0.2 %
DEVELOPED COUNTRIES						
36 . Australia	3 786.5 F	5 636.9 F	5 974.4 F	6 332.8 F	6 707.3 F	5.9 %
37 . Japan	168.0 F	264.0	308.0	133.6 F	128.5 F	2.6 %
38 . New Zealand	50.0 F	.0	.0 F	.0 F	.0 F	
SUB-TOTAL	4 004.5	5 900.9	6 282.4	6 466.4	6 835.8	5.7 %
ASIA & PACIFIC*	788 804.9	798 599.5	801 573.5	801 560.6	799 757.7	0.2 %
REST OF WORLD	926 247.4	927 187.9	969 729.1	989 181.2	989 748.9	0.7 %
WORLD	1 715 052.0	1 725 787.0	1 771 303.0	1 790 742.0	1 789 506.0	0.5 %

Table 141. Industrial Roundwood : production

Unit: 1000 CUM

Country	1991	1998	1999	2000	2001	Annual Growth Rate 1991 - 2001
DEVELOPING COUNTRIES						
SOUTHEAST ASIA						
1 . Cambodia	740.0 F	1 040.0 F	921.0	179.0	121.0	-11.7 %
2 . Indonesia	41 990.5	43 715.5	39 796.5	33 496.5	33 496.5	-2.1 %
3 . Lao PDR	637.0	571.0 F	866.0 F	567.0	570.0	1.5 %
4 . Malaysia	41 381.0	23 012.0	23 237.0	15 095.0	13 061.0	-10.9 %
5 . Myanmar	4 013.0	2 110.0	3 348.0	3 612.0	3 962.0	-0.7 %
6 . Philippines	3 796.0	2 822.0	2 970.0	3 079.0	2 685.0	-1.8 %
7 . Thailand	2 866.0	2 872.0	2 898.0	6 262.0	7 101.0	7.6 %
8 . Viet Nam	4 846.0	4 326.0	3 525.0	4 183.0	4 183.0 F	-1.5 %
SOUTH ASIA						
9 . Bangladesh	706.0	617.0	623.0	623.0	623.0	-1.1 %
10 . Bhutan	60.8	45.0 F	139.0	134.0	134.0 F	7.3 %
11 . India	24 501.0	18 918.0	19 301.0	18 854.0	18 854.0	-3.5 %
12 . Maldives						
13 . Nepal	620.0	1 260.0	1 260.0	1 260.0	1 260.0	9.5 %
14 . Pakistan	2 421.0	2 329.0	2 385.0	2 680.0	2 679.0	1.5 %
15 . Sri Lanka	636.7	631.0	636.0	676.0	694.0	0.3 %
CENTRAL ASIA						
16 . Kazakhstan						
17 . Tajikistan						
18 . Uzbekistan		8.9 *	6.0 *	6.0 F	6.0 F	-11.2 %
OTHER ASIA						
19 . China	90 099.0	107 437.0	100 361.0	96 421.0	93 861.0	0.6 %
20 . DPR Korea	600.0	1 500.0 F	1 500.0 F	1 500.0 F	1 500.0 F	13.1 %
21 . Iran (Islamic Rep. of)	1 132.0	1 059.0	960.0	1 060.0	1 060.0	-1.1 %
22 . Mongolia	631.0 F	445.0 F	445.0 F	445.0 F	445.0 F	-3.8 %
23 . Rep. of Korea	1 286.0	1 428.0	1 694.0	1 592.0	1 533.0	3.2 %
PACIFIC ISLANDS						
24 . Cook Islands	.0	5.0 F	5.0 F	5.0 F	5.0 F	0.0 %
25 . Fiji Islands	269.8	479.0	428.0	449.0	473.0	3.8 %
26 . Kiribati						
27 . Marshall Islands						
28 . Nauru						
29 . Niue						
30 . Palau						
31 . Papua New Guinea	2 655.0	3 064.0	3 064.0	3 064.0	3 064.0	0.9 %
32 . Samoa	61.0 F	61.0 F	61.0 F	61.0 F	61.0 F	0.0 %
33 . Solomon Islands	330.0	734.0 F	734.0 F	734.0 F	554.0	8.0 %
34 . Tonga	4.6 F	3.9	2.1	2.1 F	2.1 F	-8.5 %
35 . Vanuatu	39.2 F	33.8	41.0	40.0	28.0	-1.6 %
SUB-TOTAL	226 322.6	220 527.1	211 206.6	196 079.6	192 015.6	-1.7 %
DEVELOPED COUNTRIES						
36 . Australia	16 604.0	21 184.0	20 587.0	24 042.0	24 208.0	3.8 %
37 . Japan	27 938.0	19 316.0	18 737.0	17 987.0	16 108.0	-5.2 %
38 . New Zealand	14 268.0	15 302.0	17 686.0	19 279.0	20 523.0	2.8 %
SUB-TOTAL	58 810.0	55 802.0	57 010.0	61 308.0	60 839.0	0.1 %
ASIA & PACIFIC*	285 132.6	276 329.1	268 216.6	257 387.6	252 854.6	-1.3 %
REST OF WORLD	1 272 250.0	1 221 442.0	1 287 570.0	1 352 132.0	1 302 867.0	0.9 %
WORLD	1 557 382.0	1 497 771.0	1 555 787.0	1 609 519.0	1 555 722.0	0.5 %

Table 142. Sawlogs and veneer logs : production

Unit: 1000 CUM

Country	1991	1998	1999	2000	2001	Annual Growth Rate 1991 - 2001
DEVELOPING COUNTRIES						
SOUTHEAST ASIA						
1 . Cambodia	110.0 F	410.0 F	291.0	143.0	100.0	5.3 %
2 . Indonesia	35 733.0 F	34 315.0	33 300.0	27 000.0	27 000.0	-2.3 %
3 . Lao PDR	531.0	442.0 F	734.0 F	435.0	438.0	1.4 %
4 . Malaysia	40 060.0	21 484.0	21 687.0	15 095.0	13 061.0	-10.8 %
5 . Myanmar	2 783.0	2 110.0	2 085.0	2 337.0	2 662.0	0.3 %
6 . Philippines	1 561.0	546.0	568.0	384.0	260.0	-12.1 %
7 . Thailand	232.0	50.0	50.0	158.0	210.0	-0.2 %
8 . Viet Nam	2 993.0	2 217.0 F	2 123.0 F	2 571.0 F	2 571.0 F	-1.3 %
SOUTH ASIA						
9 . Bangladesh	304.0	174.0 F	174.0 F	174.0 F	174.0 F	-5.5 %
10 . Bhutan	22.8	18.0 F	67.0 F	64.0 F	64.0 F	8.7 %
11 . India	18 350.0 F	18 350.0 F	18 350.0 F	18 350.0 F	18 350.0 F	0.0 %
12 . Maldives						
13 . Nepal	620.0	1 260.0	1 260.0	1 260.0	1 260.0	9.5 %
14 . Pakistan	2 030.0	1 729.0	1 765.0	2 045.0	1 892.0	0.0 %
15 . Sri Lanka	28.0	59.0 F	59.0 F	99.0	117.0	11.8 %
CENTRAL ASIA						
16 . Kazakhstan						
17 . Tajikistan						
18 . Uzbekistan						
OTHER ASIA						
19 . China	45 303.0 F	59 559.0 F	55 583.0 F	53 623.0	51 923.0 F	1.5 %
20 . DPR Korea	600.0 F	1 000.0 F	1 000.0 F	1 000.0 F	1 000.0 F	7.0 %
21 . Iran (Islamic Rep. of)	320.0	341.0	310.0	319.0	319.0 F	-1.1 %
22 . Mongolia	631.0 F	445.0 F	445.0 F	445.0 F	445.0 F	-3.8 %
23 . Rep. of Korea	358.0 F	490.0	621.0	420.0 F	575.0 F	1.6 %
PACIFIC ISLANDS						
24 . Cook Islands	.0	5.0 F	5.0 F	5.0 F	5.0 F	0.0 %
25 . Fiji Islands	266.0	179.0	178.0	199.0	200.0	-4.3 %
26 . Kiribati						
27 . Marshall Islands						
28 . Nauru						
29 . Niue						
30 . Palau						
31 . Papua New Guinea	2 480.0 F	3 064.0 F	3 064.0 F	3 064.0 F	3 064.0 F	1.7 %
32 . Samoa	58.0 F	58.0 F	58.0 F	58.0 F	58.0 F	0.0 %
33 . Solomon Islands	330.0	734.0 F	734.0 F	734.0 F	554.0	8.0 %
34 . Tonga	4.6 F	3.9	2.1	2.1 F	2.1 F	-8.5 %
35 . Vanuatu	39.2 F	33.8	41.0	40.0	28.0	-1.6 %
SUB-TOTAL	155 747.6	149 076.7	144 554.1	130 024.1	126 332.1	-2.0 %
DEVELOPED COUNTRIES						
36 . Australia	7 892.0	10 073.0	10 043.0	11 005.0	10 727.0	3.0 %
37 . Japan	17 644.0	13 556.0	13 402.0	12 936.0	11 948.0	-4.1 %
38 . New Zealand	8 676.0	6 266.0	7 265.0	7 960.0	7 809.0	-3.7 %
SUB-TOTAL	34 212.0	29 895.0	30 710.0	31 901.0	30 484.0	-2.0 %
ASIA & PACIFIC*	189 959.6	178 971.7	175 264.1	161 925.1	156 816.1	-2.0 %
REST OF WORLD	731 594.5	730 359.7	771 294.2	814 157.6	772 980.4	1.0 %
WORLD	921 554.1	909 331.4	946 558.3	976 082.7	929 796.5	0.5 %

Table 143. Sawnwood and sleepers : production

Unit: 1000 CUM

Country	1991	1998	1999	2000	2001	Annual Growth Rate 1991 - 2001
DEVELOPING COUNTRIES						
SOUTHEAST ASIA						
1 . Cambodia	122.0	40.0	26.0	20.0	5.0	-25.7 %
2 . Indonesia	8 637.5	7 125.0	6 625.0	6 500.0	6 400.0	-2.8 %
3 . Lao PDR	300.0	250.0 F	350.0 F	208.0	227.0	-0.1 %
4 . Malaysia	8 992.5	5 091.0	5 237.0	5 590.0	4 700.0	-7.3 %
5 . Myanmar	282.0	299.0	298.0	545.0	671.0	5.7 %
6 . Philippines	729.0	222.0	288.0	151.0	199.0	-12.4 %
7 . Thailand	939.0	103.0	178.0	220.0	233.0	-17.3 %
8 . Viet Nam	885.0	2 705.0	2 937.0	2 950.0	2 950.0	17.3 %
SOUTH ASIA						
9 . Bangladesh	79.0 F	70.0 F	70.0 F	70.0 F	70.0 F	-1.5 %
10 . Bhutan	35.0	18.0 F	22.0 F	31.0 F	31.0 F	1.4 %
11 . India	17 460.0	8 400.0	8 400.0	7 900.0	7 900.0	-9.3 %
12 . Maldives						
13 . Nepal	620.0	630.0	630.0	630.0	630.0	0.2 %
14 . Pakistan	1 520.0	1 051.0	1 075.0	1 087.0	1 180.0	-3.4 %
15 . Sri Lanka	5.4	5.2	5.2	29.0	61.0	19.1 %
CENTRAL ASIA						
16 . Kazakhstan		182.0 *	337.0 *	460.0 *	229.5	10.6 %
17 . Tajikistan						
18 . Uzbekistan						
OTHER ASIA						
19 . China	20 942.0 F	18 716.0 F	16 700.0 F	7 345.0 F	8 549.3 F	-9.2 %
20 . DPR Korea	280.0 F	280.0 F	280.0 F	280.0 F	280.0 F	0.0 %
21 . Iran (Islamic Rep. of)	173.0	129.0	96.0	106.0	106.0 F	-6.3 %
22 . Mongolia	270.0	300.0 F	300.0 F	300.0 F	300.0 F	12.2 %
23 . Rep. of Korea	4 041.0	2 240.0	4 300.0	4 544.0	4 420.0	1.4 %
PACIFIC ISLANDS						
24 . Cook Islands						
25 . Fiji Islands	141.0	131.0	64.0	72.0	79.0	-4.4 %
26 . Kiribati						
27 . Marshall Islands						
28 . Nauru						
29 . Niue						
30 . Palau						
31 . Papua New Guinea	117.0 F	218.0 F	218.0 F	218.0 F	218.0 F	5.3 %
32 . Samoa	21.0	21.0 F	21.0 F	21.0 F	21.0 F	0.0 %
33 . Solomon Islands	16.0 F	12.0 F	12.0 F	12.0 F	12.0 F	-3.1 %
34 . Tonga	1.5 F	2.0	2.0 F	2.0 F	2.0 F	3.9 %
35 . Vanuatu	7.0	15.0	18.0	18.0	28.0	14.7 %
SUB-TOTAL	66 615.9	48 255.2	48 489.2	39 309.0	39 501.8	-5.7 %
DEVELOPED COUNTRIES						
36 . Australia	2 858.0	3 711.0	3 673.0	3 983.0	3 525.0	2.4 %
37 . Japan	28 264.0 F	18 625.0	17 952.0	17 094.0	15 485.0	-6.0 %
38 . New Zealand	2 263.0	3 178.0	3 653.0	3 910.0	3 807.0	5.0 %
SUB-TOTAL	33 385.0	25 514.0	25 278.0	24 987.0	22 817.0	-3.8 %
ASIA & PACIFIC*	100 000.9	73 769.2	73 767.2	64 296.0	62 318.8	-5.0 %
REST OF WORLD	357 612.3	301 538.2	310 130.5	323 838.7	314 561.1	-1.1 %
WORLD	457 613.2	375 307.4	383 897.7	388 134.7	376 879.9	-1.9 %

Table 144. Wood-based panels : production

Unit: 1000 CUM

Country	1991	1998	1999	2000	2001	Annual Growth Rate 1991 - 2001
DEVELOPING COUNTRIES						
SOUTHEAST ASIA						
1 . Cambodia	2.3	197.0	83.0	44.0	37.0	47.1 %
2 . Indonesia	9 970.5	8 209.0	8 190.0	8 896.0	8 118.0	-2.6 %
3 . Lao PDR	10.0	100.0 F	50.0 F	6.0	12.0	7.6 %
4 . Malaysia	2 505.0	5 914.0	5 448.0	5 788.0	5 334.0	5.6 %
5 . Myanmar	15.2 F	8.0	10.0	56.0	54.0	8.6 %
6 . Philippines	423.0	346.0	363.0	510.0	573.0	1.7 %
7 . Thailand	521.4	285.0	1 219.0	594.0	692.0	0.5 %
8 . Viet Nam	39.0	39.0	40.0	40.0	40.0 F	0.3 %
SOUTH ASIA						
9 . Bangladesh	9.3	9.3 F	9.3 F	9.3 F	9.3 F	0.0 %
10 . Bhutan	13.0	13.0	61.0	31.7	31.7 F	12.2 %
11 . India	378.1	231.0	285.0	357.0	357.0 F	-2.3 %
12 . Maldives						
13 . Nepal						
14 . Pakistan	87.3	109.0	117.0	137.0	354.0	9.7 %
15 . Sri Lanka	9.6 F	14.5 F	14.5 F	12.5	12.5 F	4.1 %
CENTRAL ASIA						
16 . Kazakhstan			41.0	32.6	32.6 F	-10.8 %
17 . Tajikistan						
18 . Uzbekistan						
OTHER ASIA						
19 . China	3 505.6	10 443.0	14 718.0	19 239.0	19 478.0	17.3 %
20 . DPR Korea						
21 . Iran (Islamic Rep. of)	317.0	540.4	417.0	414.0	414.0 F	4.3 %
22 . Mongolia	3.0	1.6 F	1.6 F	1.6 F	1.6 F	-3.2 %
23 . Rep. of Korea	1 582.0	2 432.0	2 990.0	3 204.0	3 194.0	8.1 %
PACIFIC ISLANDS						
24 . Cook Islands						
25 . Fiji Islands	15.6	11.0	11.0	12.0	20.0	-2.3 %
26 . Kiribati						
27 . Marshall Islands						
28 . Nauru						
29 . Niue						
30 . Palau						
31 . Papua New Guinea	46.0 F	25.0	15.0 F	12.0	12.0	-9.6 %
32 . Samoa						
33 . Solomon Islands						
34 . Tonga						
35 . Vanuatu						
SUB-TOTAL	19 452.9	28 927.8	34 083.4	39 396.7	38 776.7	6.3 %
DEVELOPED COUNTRIES						
36 . Australia	865.0	1 558.0	1 576.0	1 796.0	1 778.0	8.4 %
37 . Japan	8 503.0	5 805.0	5 480.0	5 593.0	5 088.0	-5.1 %
38 . New Zealand	743.0	1 185.0	1 478.0	1 654.0	1 693.0	8.6 %
SUB-TOTAL	10 111.0	8 548.0	8 534.0	9 043.0	8 559.0	-1.6 %
ASIA & PACIFIC*	29 563.9	37 475.8	42 617.4	48 439.7	47 335.7	4.3 %
REST OF WORLD	90 620.7	119 098.9	128 173.6	134 530.8	130 410.3	4.6 %
WORLD	120 184.6	156 574.7	170 791.0	182 970.5	177 746.0	4.5 %

Table 145. Wood pulp : production

Unit: 1000 MT

Country	1991	1998	1999	2000	2001	Annual Growth Rate 1991 - 2001
DEVELOPING COUNTRIES						
SOUTHEAST ASIA						
1 . Cambodia						
2 . Indonesia	751.0 F	1 816.0	1 646.0	3 626.0	5 482.0	16.0 %
3 . Lao PDR						
4 . Malaysia	.0	112.0	119.0	123.0	123.0 F	3.8 %
5 . Myanmar						
6 . Philippines	152.0	122.0 F	173.0	175.0	175.0 F	2.6 %
7 . Thailand	.0	544.0	756.0	764.0	919.0	40.4 %
8 . Viet Nam	45.5	59.0 F	220.0	240.0	240.0 F	18.2 %
SOUTH ASIA						
9 . Bangladesh	96.0	19.0	19.0 F	19.0 F	19.0 F	-18.8 %
10 . Bhutan						
11 . India	986.0	1 498.0	1 558.0	1 590.0	1 590.0 F	5.5 %
12 . Maldives						
13 . Nepal						
14 . Pakistan	.0	24.0	25.0	25.0 F	25.0	1.2 %
15 . Sri Lanka	6.2	2.4 F	2.4 F	1.2	2.6	-7.6 %
CENTRAL ASIA						
16 . Kazakhstan						
17 . Tajikistan						
18 . Uzbekistan						
OTHER ASIA						
19 . China	2 102.0	2 240.0	3 590.0	3 700.0	4 075.0	5.6 %
20 . DPR Korea	56.0 F	56.0 F	56.0 F	56.0 F	56.0 F	0.0 %
21 . Iran (Islamic Rep. of)	80.0	.0	.0 F	.0 F	.0 F	
22 . Mongolia						
23 . Rep. of Korea	327.0	418.0	587.0	594.0	554.0	5.1 %
PACIFIC ISLANDS						
24 . Cook Islands						
25 . Fiji Islands						
26 . Kiribati						
27 . Marshall Islands						
28 . Nauru						
29 . Niue						
30 . Palau						
31 . Papua New Guinea						
32 . Samoa						
33 . Solomon Islands						
34 . Tonga						
35 . Vanuatu						
SUB-TOTAL	4 601.7	6 910.4	8 751.4	10 913.2	13 260.6	9.4 %
DEVELOPED COUNTRIES						
36 . Australia	1 037.0	936.0	882.0	894.0	1 074.0	-0.8 %
37 . Japan	11 722.0	10 988.0	10 971.0	11 373.0	10 792.0	-0.1 %
38 . New Zealand	1 350.0	1 418.0	1 467.0	1 606.0	1 501.0	1.6 %
SUB-TOTAL	14 109.0	13 342.0	13 320.0	13 873.0	13 367.0	0.0 %
ASIA & PACIFIC*	18 710.7	20 252.4	22 071.4	24 786.2	26 627.6	3.3 %
REST OF WORLD	136 490.9	139 682.6	141 551.5	146 714.7	139 857.2	0.6 %
WORLD	155 201.6	159 935.0	163 622.9	171 500.9	166 484.8	1.0 %

Table 146. Paper and paperboard : production

Unit: 1000 MT

Country	1991	1998	1999	2000	2001	Annual Growth Rate 1991 - 2001
DEVELOPING COUNTRIES						
SOUTHEAST ASIA						
1 . Cambodia	.0	.0 F	.0 F	.0 F	.0 F	
2 . Indonesia	1 755.0 *	5 487.0 *	6 978.0	6 977.0	6 995.0	15.5 %
3 . Lao PDR						
4 . Malaysia	293.0	761.0	859.0	791.0	851.0	7.2 %
5 . Myanmar	11.0	41.0	37.4	39.2	41.6	17.2 %
6 . Philippines	473.0	987.0	1 010.0	1 107.0	1 056.0	9.5 %
7 . Thailand	958.0	2 367.0	2 434.0	2 312.0	2 445.0	9.7 %
8 . Viet Nam	108.4	190.0	356.0	384.0	384.0 F	15.0 %
SOUTH ASIA						
9 . Bangladesh	104.0	46.0	46.0 F	46.0 F	46.0 F	-11.7 %
10 . Bhutan						
11 . India	2 362.0	3 320.0	3 845.0	3 673.0	3 973.0	5.1 %
12 . Maldives						
13 . Nepal	13.0	13.0 F	13.0 F	13.0 F	13.0 F	0.0 %
14 . Pakistan	206.0	527.0	574.0	592.0	1 165.0	14.2 %
15 . Sri Lanka	23.0	24.5 F	24.5 F	23.5 F	24.5 F	-1.1 %
CENTRAL ASIA						
16 . Kazakhstan		.0	.3	19.5 F	5.9 F	
17 . Tajikistan						
18 . Uzbekistan						
OTHER ASIA						
19 . China	18 640.0	32 303.0 *	34 137.0	35 439.0	37 929.0	7.3 %
20 . DPR Korea	80.0 F	80.0 F	80.0 F	80.0 F	80.0 F	0.0 %
21 . Iran (Islamic Rep. of)	235.0	20.0	25.0	46.0	46.0 F	-20.7 %
22 . Mongolia						
23 . Rep. of Korea	4 922.0	7 750.0	8 875.0	9 308.0	9 332.0	6.7 %
PACIFIC ISLANDS						
24 . Cook Islands						
25 . Fiji Islands						
26 . Kiribati						
27 . Marshall Islands						
28 . Nauru						
29 . Niue						
30 . Palau						
31 . Papua New Guinea						
32 . Samoa						
33 . Solomon Islands						
34 . Tonga						
35 . Vanuatu						
SUB-TOTAL	30 183.4	53 916.5	59 294.2	60 850.2	64 387.0	7.8 %
DEVELOPED COUNTRIES						
36 . Australia	2 018.0	2 541.0	2 564.0	2 836.0	2 652.0	3.6 %
37 . Japan	29 053.0	29 886.0	30 631.0	31 828.0	30 717.0	1.1 %
38 . New Zealand	815.0	844.0	817.0	877.0	839.0	0.6 %
SUB-TOTAL	31 886.0	33 271.0	34 012.0	35 541.0	34 208.0	1.2 %
ASIA & PACIFIC*	62 069.4	87 187.5	93 306.2	96 391.2	98 595.0	5.0 %
REST OF WORLD	181 266.9	214 548.9	222 381.1	227 417.3	221 353.4	2.5 %
WORLD	243 336.3	301 736.4	315 687.2	323 808.4	319 948.4	3.2 %

Table 147. Forestry products : imports in value

Unit: 1000 US\$

Country	1991	1998	1999	2000	2001	Annual Growth Rate 1991 - 2001
DEVELOPING COUNTRIES						
SOUTHEAST ASIA						
1 . Cambodia	99	2 925	7 301	6 031	14 192	46.1 %
2 . Indonesia	467 560	842 345	1 011 106	1 375 595	1 029 672	7.8 %
3 . Lao PDR	950	1 902	1 704	99	1 748	2.5 %
4 . Malaysia	631 826	759 054	955 210	972 365	1 046 761	5.9 %
5 . Myanmar	5 681	11 843	18 874	19 634	29 255	22.5 %
6 . Philippines	203 955	498 885	617 858	631 211	568 912	10.1 %
7 . Thailand	1 209 019	707 146	982 962	1 221 899	1 091 881	-4.1 %
8 . Viet Nam	9 722	136 647	132 913	132 913	217 756	29.5 %
SOUTH ASIA						
9 . Bangladesh	16 257	131 819	92 529	92 529	110 223	19.6 %
10 . Bhutan	18	2 159	2 159 F	2 086 F	425	63.8 %
11 . India	597 171	831 168	825 358	999 868	942 581	9.5 %
12 . Maldives	3 568	4 220 F	4 220 F	4 220 F	4 220 F	-4.1 %
13 . Nepal	3 860	1 444	2 572	2 572	3 952	3.6 %
14 . Pakistan	158 596	172 154	162 973	162 875	137 294	-1.2 %
15 . Sri Lanka	71 448	81 534	83 210	81 534	157 097	5.8 %
CENTRAL ASIA						
16 . Kazakhstan		26 182	48 398	87 996	87 996	91.3 %
17 . Tajikistan		3 283	3 983	3 983	3 983	83.5 %
18 . Uzbekistan		24 958	37 231	37 231	37 231	79.4 %
OTHER ASIA						
19 . China	6 390 851	11 126 590	12 343 270	14 699 160	14 570 890	8.8 %
20 . DPR Korea	4 526	8 781	8 781	8 781	32 144	1.3 %
21 . Iran (Islamic Rep. of)	459 831	198 868	368 685	479 652	422 401	3.5 %
22 . Mongolia	1 495	2 873	2 944	2 968	2 968	16.5 %
23 . Rep. of Korea	3 080 248	2 082 533	2 950 053	3 708 419	3 138 136	-0.8 %
PACIFIC ISLANDS						
24 . Cook Islands	5	1 463	1 463	994	1 893	27.7 %
25 . Fiji Islands	16 026	8 189	12 671	12 671	12 671	0.2 %
26 . Kiribati	1	769	769	769	769	41.1 %
27 . Marshall Islands		1 923 F	1 923 F	1 923 F	1 923 F	1.9 %
28 . Nauru		205	205	205	205	-6.8 %
29 . Niue		142	142	142	142	-2.0 %
30 . Palau		1 123	1 123	1 123	1 123	-2.1 %
31 . Papua New Guinea	5 443	4 103	12 439	9 924	8 875	8.3 %
32 . Samoa	1 499	1 790	2 542	2 189	3 512	0.9 %
33 . Solomon Islands	666	309	420	264	264	-7.9 %
34 . Tonga	2 069	1 650	2 065	1 739	1 739	-2.4 %
35 . Vanuatu	185	570	588	1 132	2 176	21.7 %
SUB-TOTAL	13 342 580	17 681 550	20 700 640	24 766 690	23 687 010	5.8 %
DEVELOPED COUNTRIES						
36 . Australia	1 217 229	1 407 988	1 575 485	1 768 829	1 308 964	1.8 %
37 . Japan	12 631 370	10 979 660	12 351 190	13 391 160	11 260 300	-2.3 %
38 . New Zealand	187 275	297 919	269 521	264 916	252 200	1.6 %
SUB-TOTAL	14 035 880	12 685 570	14 196 200	15 424 910	12 821 460	-1.8 %
ASIA & PACIFIC*	27 378 450	30 367 120	34 896 840	40 191 600	36 508 470	2.3 %
REST OF WORLD	79 924 500	104 234 100	106 273 600	113 177 600	105 646 000	3.7 %
WORLD	107 303 000	134 601 300	141 170 500	153 369 200	142 154 500	3.3 %

Table 148. Forestry products : exports in value

Unit: 1000 US\$

Country	1991	1998	1999	2000	2001	Annual Growth Rate 1991 - 2001
DEVELOPING COUNTRIES						
SOUTHEAST ASIA						
1 . Cambodia	15 114	105 530	41 764	28 185	14 177	-7.9 %
2 . Indonesia	3 930 703	4 395 065	4 916 019	5 517 412	4 993 992	2.0 %
3 . Lao PDR	35 799	23 226	24 115	13 542	62 697	-7.9 %
4 . Malaysia	3 142 102	2 499 521	2 956 315	2 792 810	3 081 708	-3.2 %
5 . Myanmar	405 498	203 088	225 892	246 482	291 508	-3.3 %
6 . Philippines	95 030	65 726	49 730	93 867	93 250	-2.2 %
7 . Thailand	143 805	494 227	735 632	788 867	730 379	18.8 %
8 . Viet Nam	116 289	34 719	47 277	47 277	55 331	-7.5 %
SOUTH ASIA						
9 . Bangladesh	8 871	14 405	14 405 F	14 405 F	5	-9.0 %
10 . Bhutan	10 481	156	156	121 F	162	-13.1 %
11 . India	39 237	37 607	68 717	53 700	96 219	9.5 %
12 . Maldives		14 F	14 F	14 F	14 F	-17.7 %
13 . Nepal	79	1 410	1 199	1 199 F	1 528	38.2 %
14 . Pakistan	16	0 F	0 F	0 F	0 F	
15 . Sri Lanka	62	2 862	2 775	2 862 F	9 446	22.4 %
CENTRAL ASIA						
16 . Kazakhstan		598	29 881	42 225	42 225	67.5 %
17 . Tajikistan		19	80	80	80	39.6 %
18 . Uzbekistan		154	130	130	130 F	38.1 %
OTHER ASIA						
19 . China	1 803 226	3 583 221	3 010 153	3 639 936	3 697 712	6.8 %
20 . DPR Korea	4 614	15 192	15 192	15 192	6 119	8.4 %
21 . Iran (Islamic Rep. of)	4	487	0	0 F	0 F	31.0 %
22 . Mongolia	349	24 741	6 289	617	617	-1.7 %
23 . Rep. of Korea	514 659	1 544 453	1 514 287	1 626 515	1 378 991	12.6 %
PACIFIC ISLANDS						
24 . Cook Islands	21	726	726	726	130	10.3 %
25 . Fiji Islands	47 817	31 411	19 652	25 298	18 900	-4.4 %
26 . Kiribati						
27 . Marshall Islands						
28 . Nauru		23 F	23 F	23 F	23 F	24.9 %
29 . Niue	30					
30 . Palau						
31 . Papua New Guinea	165 081	123 650	168 807	239 826	199 239	-5.3 %
32 . Samoa	15	231	1 121	995 F	995 F	50.0 %
33 . Solomon Islands	36 047	104 578	51 070	51 247	47 752	-0.8 %
34 . Tonga	6	20	12	13 F	13 F	-4.8 %
35 . Vanuatu	294	3 767	3 972	2 726	2 379	20.7 %
SUB-TOTAL	10 515 250	13 310 830	13 905 400	15 246 290	14 825 720	2.4 %
DEVELOPED COUNTRIES						
36 . Australia	469 403	679 339	719 044	806 807	784 502	5.3 %
37 . Japan	1 744 244	1 451 663	1 755 888	1 933 527	1 593 121	0.5 %
38 . New Zealand	928 788	1 129 829	1 291 965	1 482 735	1 366 690	2.6 %
SUB-TOTAL	3 142 435	3 260 831	3 766 897	4 223 069	3 744 313	2.0 %
ASIA & PACIFIC*	13 657 680	16 571 660	17 672 300	19 469 360	18 570 030	2.3 %
REST OF WORLD	84 781 070	114 059 600	115 770 100	125 543 900	113 034 500	3.7 %
WORLD	98 438 750	130 631 300	133 442 400	145 013 200	131 604 600	3.5 %