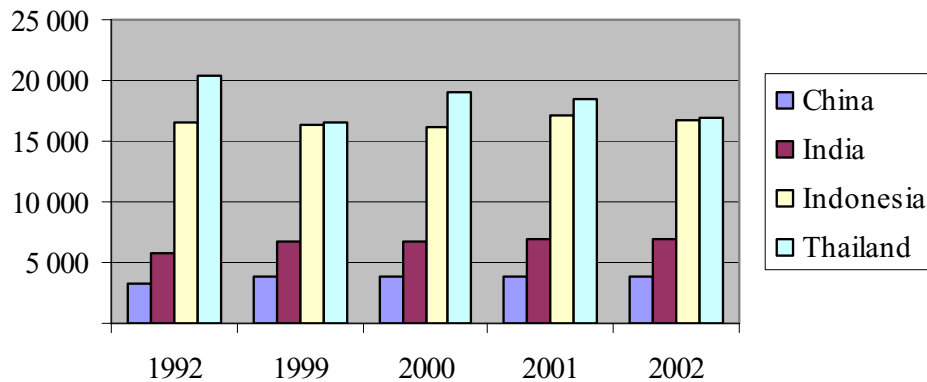


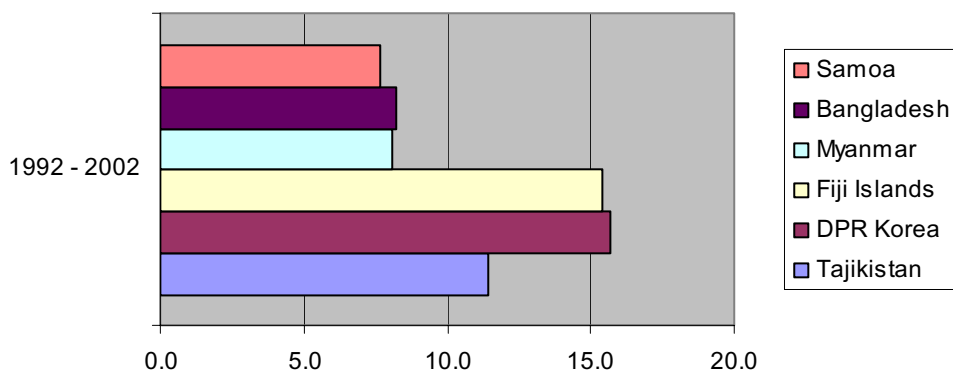
**Countries in Asia-Pacific region with largest production (1000 MT) of cassava**



## STAPLE FOOD CROPS

### B. Root Crops

**Countries in Asia-Pacific region with highest annual growth rates for production of roots and tubers**



**Table 27. Cassava : production**

Unit: 1000 MT

Country	1992	1999	2000	2001	2002	Annual Growth Rate 1992 - 2002
<b>DEVELOPING COUNTRIES</b>						
SOUTHEAST ASIA						
1 . Cambodia	150.0	228.5	147.8	142.3	186.8	9.2 %
2 . Indonesia	16 515.9	16 438.1	16 089.1	17 054.6	16 723.3	0.1 %
3 . Lao PDR	67.0 *	71.0 *	71.0 *	71.0 F	70.0 F	0.5 %
4 . Malaysia	430.0 F	380.0 F	380.0 F	380.0 F	370.0 F	-1.8 %
5 . Myanmar	40.7	88.1	77.2	96.8	96.8 F	6.4 %
6 . Philippines	1 797.8	1 890.3	1 765.7	1 652.0	1 652.0 F	-1.1 %
7 . Thailand	20 356.0	16 506.6	19 064.0	18 396.0	16 870.0	-1.3 %
8 . Viet Nam	2 567.9	1 800.5	1 986.3	2 806.2	4 157.7	1.7 %
SOUTH ASIA						
9 . Bangladesh						
10 . Bhutan						
11 . India	5 832.5	6 700.0 F	6 800.0 F	6 900.0 F	6 900.0 F	2.4 %
12 . Maldives	.0 F	.0	.0	.1	.1 F	12.9 %
13 . Nepal						
14 . Pakistan						
15 . Sri Lanka	302.2	251.5	249.1	233.6	234.0 F	-3.1 %
CENTRAL ASIA						
16 . Kazakhstan						
17 . Tajikistan						
18 . Uzbekistan						
OTHER ASIA						
19 . China	3 357.3 F	3 750.7 F	3 800.9 F	3 851.3 F	3 851.3 F	1.5 %
20 . DPR Korea						
21 . Iran (Islamic Rep. of)						
22 . Mongolia						
23 . Rep.of Korea						
PACIFIC ISLANDS						
24 . Cook Islands	3.99 F	3.00 F	3.00 F	3.00 F	3.00 F	-2.6 %
25 . Fiji Islands	8.06	26.90	31.94	32.58	33.00 F	13.7 %
26 . Kiribati						
27 . Marshall Islands						
28 . Nauru						
29 . Niue	.04 F	.04 F	.04 F	.04 F	.04 F	0.0 %
30 . Palau						
31 . Papua New Guinea	113.00 *	120.00 *	120.00 *	125.00 F	125.00 F	1.1 %
32 . Samoa	.25 F	.30 F	.30 F	.30 F	.30 F	2.4 %
33 . Solomon Islands	1.50 F	2.10 F	2.30 F	2.30 F	2.30 F	4.5 %
34 . Tonga	28.86	16.00 F	9.07	9.07 F	9.07 F	-15.6 %
35 . Vanuatu						
SUB-TOTAL	51 573.0	48 273.8	50 597.8	51 756.2	51 284.7	0.0 %
<b>DEVELOPED COUNTRIES</b>						
36 . Australia						
37 . Japan						
38 . New Zealand						
SUB-TOTAL						
ASIA & PACIFIC*	51 573.0	48 273.8	50 597.8	51 756.2	51 284.7	0.0 %
REST OF WORLD	110 588.2	123 387.1	127 969.4	131 532.7	133 567.9	2.0 %
WORLD	162 161.3	171 660.9	178 567.2	183 288.9	184 852.5	1.4 %

**Table 28. Cassava : yield**

Unit: kg/ha

Country	1992	1999	2000	2001	2002	Annual Growth Rate 1992 - 2002
<b>DEVELOPING COUNTRIES</b>						
SOUTHEAST ASIA						
1 . Cambodia	9 375.0	16 318.8	9 607.5	10 468.1	10 263.7	6.2 %
2 . Indonesia	12 222.0	12 176.3	12 530.5	12 940.7	12 963.8	0.8 %
3 . Lao PDR	13 400.0	13 653.9	13 653.9	13 653.9	13 461.5	0.0 %
4 . Malaysia	10 487.8	10 000.0	10 000.0	10 000.0	9 736.8	-0.7 %
5 . Myanmar	9 234.7	11 394.0	10 072.8	10 685.1	10 685.1	1.8 %
6 . Philippines	8 799.6	8 453.2	8 399.8	7 607.0	7 607.0	-1.2 %
7 . Thailand	14 033.2	15 492.8	16 857.7	17 959.3	16 378.6	2.5 %
8 . Viet Nam	9 048.3	7 988.0	8 359.9	10 633.6	12 602.9	2.2 %
SOUTH ASIA						
9 . Bangladesh						
10 . Bhutan						
11 . India	23 246.3	25 000.0	25 185.2	25 555.6	25 555.6	0.9 %
12 . Maldives	3 000.0	3 900.0	2 071.4	4 500.0	4 500.0	3.9 %
13 . Nepal						
14 . Pakistan						
15 . Sri Lanka	8 845.3	8 546.0	8 433.0	8 556.0	8 509.1	-0.8 %
CENTRAL ASIA						
16 . Kazakhstan						
17 . Tajikistan						
18 . Uzbekistan						
OTHER ASIA						
19 . China	14 562.4	15 957.1	15 965.1	16 040.5	16 040.5	1.0 %
20 . DPR Korea						
21 . Iran (Islamic Rep. of)						
22 . Mongolia						
23 . Rep.of Korea						
PACIFIC ISLANDS						
24 . Cook Islands	33 250.0	17 647.1	17 647.1	17 647.1	17 647.1	-4.3 %
25 . Fiji Islands	5 078.1	13 450.0	13 309.6	13 575.8	13 750.0	11.4 %
26 . Kiribati						
27 . Marshall Islands						
28 . Nauru						
29 . Niue	5 142.9	5 142.9	5 142.9	5 142.9	5 142.9	0.0 %
30 . Palau						
31 . Papua New Guinea	10 660.4	10 909.1	10 909.1	10 869.6	10 869.6	0.2 %
32 . Samoa	12 500.0	12 500.0	12 500.0	12 500.0	12 500.0	0.0 %
33 . Solomon Islands	16 666.7	16 153.9	16 428.6	16 428.6	16 428.6	-0.4 %
34 . Tonga	16 463.8	13 168.7	12 957.1	12 957.1	12 957.1	-2.1 %
35 . Vanuatu						
AVERAGE	12 421.9	12 518.5	12 106.9	12 511.6	12 505.3	0.5 %
<b>DEVELOPED COUNTRIES</b>						
36 . Australia						
37 . Japan						
38 . New Zealand						
AVERAGE						
ASIA & PACIFIC*	13 270.8	13 886.0	14 535.4	15 038.8	14 694.4	1.5 %
REST OF WORLD	8 672.4	9 423.1	9 587.6	9 588.3	9 694.7	1.1 %
WORLD	9 746.5	10 359.4	10 611.0	10 681.5	10 705.2	1.1 %

**Table 29. Cassava : area harvested**

Unit: 1000 ha

Country	1992	1999	2000	2001	2002	Annual Growth Rate 1992 - 2002
<b>DEVELOPING COUNTRIES</b>						
SOUTHEAST ASIA						
1 . Cambodia	16.0	14.0	15.4	13.6	18.2	2.8 %
2 . Indonesia	1 351.3	1 350.0	1 284.0	1 317.9	1 290.0 F	-0.7 %
3 . Lao PDR	5.0 F	5.2 F	5.2 F	5.2 F	5.2 F	0.5 %
4 . Malaysia	41.0 F	38.0 F	38.0 F	38.0 F	38.0 F	-1.1 %
5 . Myanmar	4.4	7.7	7.7	9.1	9.1 F	4.5 %
6 . Philippines	204.3	223.6	210.2	217.2	217.2 F	0.1 %
7 . Thailand	1 450.6	1 065.4	1 130.9	1 024.3	1 030.0 F	-3.7 %
8 . Viet Nam	283.8	225.4	237.6	263.9	329.9	-0.5 %
SOUTH ASIA						
9 . Bangladesh						
10 . Bhutan						
11 . India	250.9	268.0 F	270.0 F	270.0 F	270.0 F	1.5 %
12 . Maldives	.0 F	.0	.0	.0 F	.0 F	8.6 %
13 . Nepal						
14 . Pakistan						
15 . Sri Lanka	34.2	29.4	29.5	27.3	27.5 F	-2.3 %
CENTRAL ASIA						
16 . Kazakhstan						
17 . Tajikistan						
18 . Uzbekistan						
OTHER ASIA						
19 . China	230.5 F	235.1 F	238.1 F	240.1 F	240.1 F	0.5 %
20 . DPR Korea						
21 . Iran (Islamic Rep. of)						
22 . Mongolia						
23 . Rep.of Korea						
PACIFIC ISLANDS						
24 . Cook Islands	.12	.17 F	.17 F	.17 F	.17 F	1.8 %
25 . Fiji Islands	1.59	2.00 F	2.40 F	2.40 F	2.40 F	2.1 %
26 . Kiribati						
27 . Marshall Islands						
28 . Nauru						
29 . Niue	.01 F	.01 F	.01 F	.01 F	.01 F	0.0 %
30 . Palau						
31 . Papua New Guinea	10.60 *	11.00 *	11.00 *	11.50 F	11.50 F	0.9 %
32 . Samoa	.02 F	.02 F	.02 F	.02 F	.02 F	2.4 %
33 . Solomon Islands	.09 F	.13 F	.14 F	.14 F	.14 F	4.9 %
34 . Tonga	1.75 *	1.22 *	.70 F	.70 F	.70 F	-13.9 %
35 . Vanuatu						
SUB-TOTAL	3 886.2	3 476.4	3 481.0	3 441.5	3 490.1	-1.4 %
<b>DEVELOPED COUNTRIES</b>						
36 . Australia						
37 . Japan						
38 . New Zealand						
SUB-TOTAL						
ASIA & PACIFIC*	3 886.2	3 476.4	3 481.0	3 441.5	3 490.1	-1.4 %
REST OF WORLD	12 751.7	13 094.1	13 347.5	13 718.0	13 777.4	0.8 %
WORLD	16 637.9	16 570.5	16 828.5	17 159.5	17 267.5	0.3 %

**Table 30. Sweet potatoes : production**

Unit: 1000 MT

Country	1992	1999	2000	2001	2002	Annual Growth Rate 1992 - 2002
<b>DEVELOPING COUNTRIES</b>						
SOUTHEAST ASIA						
1 . Cambodia	60.0	32.5	28.2	26.3	25.5	-7.0 %
2 . Indonesia	2 171.0	1 665.5	1 828.0	1 749.0	1 746.3	-2.2 %
3 . Lao PDR	105.1	80.6	117.5	100.8	102.0 F	-1.6 %
4 . Malaysia	40.7 F	41.0 F	41.0 F	41.0 F	41.0 F	-0.1 %
5 . Myanmar	26.9 F	30.6	38.1	57.4	57.4 F	8.2 %
6 . Philippines	676.6	557.4	554.0	545.4	549.3	-2.9 %
7 . Thailand	98.0 F	100.1	90.9	97.4	97.4 F	0.0 %
8 . Viet Nam	2 593.0	1 744.6	1 611.3	1 655.1	1 725.1	-3.6 %
SOUTH ASIA						
9 . Bangladesh	470.2	383.0	378.0	357.0	346.0	-2.7 %
10 . Bhutan						
11 . India	1 130.7	1 152.4	1 007.4	1 200.0 F	1 200.0 F	-0.4 %
12 . Maldives	.0 *	.0	.0	.2	.2 F	20.6 %
13 . Nepal						
14 . Pakistan	5.6	9.3	9.1	9.2	9.1	5.2 %
15 . Sri Lanka	60.2	51.6	51.8	48.5	48.5 F	-2.4 %
CENTRAL ASIA						
16 . Kazakhstan						
17 . Tajikistan						
18 . Uzbekistan						
OTHER ASIA						
19 . China	104 637.4 *	126 143.7	118 175.9	113 785.1	114 289.1 *	0.7 %
20 . DPR Korea	288.0	490.0 *	290.0 *	320.0 F	340.0 F	8.4 %
21 . Iran (Islamic Rep. of)						
22 . Mongolia						
23 . Rep.of Korea	314.8	428.1	344.9	273.1	250.0 F	0.4 %
PACIFIC ISLANDS						
24 . Cook Islands	1.69 F	1.40 F	1.40 F	1.40 F	1.40 F	-2.6 %
25 . Fiji Islands	1.64	5.10	6.07	6.19 F	6.19 F	9.2 %
26 . Kiribati						
27 . Marshall Islands						
28 . Nauru						
29 . Niue	.25 F	.25 F	.25 F	.25 F	.25 F	0.1 %
30 . Palau						
31 . Papua New Guinea	475.00 *	480.00 *	480.00 *	490.00 F	490.00 F	0.5 %
32 . Samoa						
33 . Solomon Islands	60.00 F	75.00 F	79.00 F	84.00 F	84.00 F	3.4 %
34 . Tonga	3.84	3.08	8.00	5.50 F	5.50 F	1.0 %
35 . Vanuatu						
SUB-TOTAL	113 220.7	133 475.3	125 140.9	120 852.7	121 414.3	0.6 %
<b>DEVELOPED COUNTRIES</b>						
36 . Australia	5.9	6.0 F	6.0 F	6.0 F	6.0 F	-2.3 %
37 . Japan	1 295.0	1 008.0	1 073.4	1 063.0	1 030.0	-1.6 %
38 . New Zealand	19.4	17.0	17.5	16.0	16.0	-4.4 %
SUB-TOTAL	1 320.3	1 031.0	1 096.9	1 085.0	1 052.0	-1.7 %
ASIA & PACIFIC*	114 541.0	134 506.3	126 237.8	121 937.7	122 466.3	0.6 %
REST OF WORLD	9 105.4	12 163.6	12 730.1	13 662.1	13 664.1	4.5 %
WORLD	123 646.4	146 669.9	138 967.9	135 599.8	136 130.4	0.9 %

**Table 31. Sweet potatoes : yield**

Unit: kg/ha

Country	1992	1999	2000	2001	2002	Annual Growth Rate 1992 - 2002
<b>DEVELOPING COUNTRIES</b>						
SOUTHEAST ASIA						
1 . Cambodia	6 000.0	3 488.1	3 789.9	3 721.1	3 711.9	-4.1 %
2 . Indonesia	9 448.1	9 669.8	9 422.7	9 663.0	10 272.4	0.4 %
3 . Lao PDR	7 272.3	6 176.3	6 056.7	6 174.1	6 250.0	-2.5 %
4 . Malaysia	11 000.0	11 081.1	11 081.1	11 081.1	11 081.1	0.1 %
5 . Myanmar	5 380.0	5 649.2	5 741.6	6 701.9	6 701.9	2.5 %
6 . Philippines	4 806.5	4 211.5	4 338.8	4 379.3	4 394.6	-1.2 %
7 . Thailand	10 103.1	13 077.6	12 090.4	12 071.7	12 071.7	2.2 %
8 . Viet Nam	6 404.1	6 456.7	6 336.2	6 763.8	7 199.9	1.6 %
SOUTH ASIA						
9 . Bangladesh	9 647.7	9 278.6	9 247.9	9 090.7	9 091.9	-0.6 %
10 . Bhutan						
11 . India	8 283.5	8 574.4	8 836.8	8 888.9	8 888.9	0.7 %
12 . Maldives	221.4	1 655.2	816.3	2 250.0	2 250.0	31.3 %
13 . Nepal						
14 . Pakistan	10 436.8	11 233.9	10 977.1	10 416.8	10 038.6	0.5 %
15 . Sri Lanka	6 056.8	6 157.5	6 271.2	6 183.4	6 183.4	-0.8 %
CENTRAL ASIA						
16 . Kazakhstan						
17 . Tajikistan						
18 . Uzbekistan						
OTHER ASIA						
19 . China	16 710.0	21 215.0	20 289.9	20 661.0	19 018.9	1.6 %
20 . DPR Korea	14 400.0	13 424.7	12 608.7	11 428.6	11 333.3	-1.8 %
21 . Iran (Islamic Rep. of)						
22 . Mongolia						
23 . Rep.of Korea	20 075.2	21 288.2	21 356.2	21 473.4	20 833.3	1.1 %
PACIFIC ISLANDS						
24 . Cook Islands	30 727.3	28 000.0	28 000.0	28 000.0	28 000.0	0.2 %
25 . Fiji Islands	9 133.3	10 700.2	8 243.2	8 250.7	8 250.7	2.2 %
26 . Kiribati						
27 . Marshall Islands						
28 . Nauru						
29 . Niue	17 500.0	17 857.1	17 857.1	17 857.1	17 857.1	0.1 %
30 . Palau						
31 . Papua New Guinea	4 750.0	4 705.9	4 705.9	4 757.3	4 757.3	0.2 %
32 . Samoa						
33 . Solomon Islands	14 634.2	14 423.1	14 363.6	14 000.0	14 000.0	-0.5 %
34 . Tonga	12 371.0	12 369.5	12 345.7	12 222.2	12 222.2	0.7 %
35 . Vanuatu						
AVERAGE	10 698.2	10 940.6	10 671.7	10 728.9	10 655.0	0.4 %
<b>DEVELOPED COUNTRIES</b>						
36 . Australia	12 754.8	17 142.9	17 142.9	17 142.9	17 142.9	3.0 %
37 . Japan	23 502.7	22 651.7	24 732.7	25 130.0	24 523.8	1.1 %
38 . New Zealand	17 636.4	17 000.0	14 450.9	13 333.3	13 333.3	-5.3 %
AVERAGE	17 964.6	18 931.5	18 775.5	18 535.4	18 333.3	-0.4 %
ASIA & PACIFIC*	15 327.1	19 338.8	18 558.6	18 820.1	17 582.9	1.6 %
REST OF WORLD	5 287.9	5 451.3	5 121.5	5 103.7	4 879.5	-0.4 %
WORLD	13 447.1	15 965.6	14 962.5	14 810.0	13 940.1	0.6 %

**Table 32. Sweet potatoes : area harvested**

Unit: 1000 ha

Country	1992	1999	2000	2001	2002	Annual Growth Rate 1992 - 2002
<b>DEVELOPING COUNTRIES</b>						
SOUTHEAST ASIA						
1 . Cambodia	10.0	9.3	7.4	7.1	6.9	-3.1 %
2 . Indonesia	229.8	172.2	194.0	181.0	170.0 F	-2.6 %
3 . Lao PDR	14.5	13.1	19.4	16.3	16.3 F	0.9 %
4 . Malaysia	3.7 F	3.7 F	3.7 F	3.7 F	3.7 F	-0.2 %
5 . Myanmar	5.0 F	5.4	6.6	8.6	8.6 F	5.6 %
6 . Philippines	140.8	132.3	127.7	124.5	125.0 F	-1.7 %
7 . Thailand	9.7 F	7.7	7.5	8.1	8.1 F	-2.1 %
8 . Viet Nam	404.9	270.2	254.3	244.7	239.6	-5.1 %
SOUTH ASIA						
9 . Bangladesh	48.7	41.3	40.9	39.3	38.1	-2.1 %
10 . Bhutan						
11 . India	136.5	134.4	114.0	135.0 F	135.0 F	-1.1 %
12 . Maldives	.1 F	.0	.0	.1 F	.1 F	-8.2 %
13 . Nepal						
14 . Pakistan	.5	.8	.8	.9	.9	4.6 %
15 . Sri Lanka	9.9	8.4	8.3	7.9	7.9 F	-1.7 %
CENTRAL ASIA						
16 . Kazakhstan						
17 . Tajikistan						
18 . Uzbekistan						
OTHER ASIA						
19 . China	6 262.0 *	5 946.0	5 824.4	5 507.3	6 009.3 F	-0.8 %
20 . DPR Korea	20.0 F	36.5 F	23.0 F	28.0 F	30.0 F	10.3 %
21 . Iran (Islamic Rep. of)						
22 . Mongolia						
23 . Rep.of Korea	15.7	20.1	16.1	12.7	12.0 F	-0.8 %
PACIFIC ISLANDS						
24 . Cook Islands	.06	.05 F	.05 F	.05 F	.05 F	-2.8 %
25 . Fiji Islands	.18	.48	.74	.75 F	.75 F	6.9 %
26 . Kiribati						
27 . Marshall Islands						
28 . Nauru						
29 . Niue	.01 F	.01 F	.01 F	.01 F	.01 F	0.0 %
30 . Palau						
31 . Papua New Guinea	100.00 *	102.00 *	102.00 *	103.00 F	103.00 F	0.3 %
32 . Samoa						
33 . Solomon Islands	4.10 F	5.20 F	5.50 F	6.00 F	6.00 F	4.0 %
34 . Tonga	.31	.25	.65	.45 F	.45 F	0.3 %
35 . Vanuatu						
SUB-TOTAL	7 416.4	6 909.4	6 757.2	6 435.3	6 921.5	-1.0 %
<b>DEVELOPED COUNTRIES</b>						
36 . Australia	.5	.4 F	.4 F	.4 F	.4 F	-5.2 %
37 . Japan	55.1	44.5	43.4	42.3	42.0 F	-2.7 %
38 . New Zealand	1.1 F	1.0	1.2	1.2	1.2	1.0 %
SUB-TOTAL	56.7	45.9	45.0	43.9	43.6	-2.6 %
ASIA & PACIFIC*	7 473.1	6 955.3	6 802.1	6 479.1	6 965.1	-1.0 %
REST OF WORLD	1 721.9	2 231.3	2 485.6	2 676.9	2 800.3	4.9 %
WORLD	9 195.0	9 186.6	9 287.8	9 156.0	9 765.4	0.3 %

**Table 33. Potatoes : production**

Unit: 1000 MT

Country	1992	1999	2000	2001	2002	Annual Growth Rate 1992 - 2002
<b>DEVELOPING COUNTRIES</b>						
SOUTHEAST ASIA						
1 . Cambodia						
2 . Indonesia	702.6	924.1	977.3	954.3	850.0 F	1.5 %
3 . Lao PDR	35.0 *	33.0 *	33.0 *	34.0 F	35.0 F	0.2 %
4 . Malaysia						
5 . Myanmar	156.3	244.6	254.7	318.6	318.6 F	8.7 %
6 . Philippines	64.7	63.6	63.5	66.0	68.0 F	-1.6 %
7 . Thailand	30.0 F	100.1	90.9	84.1	84.1 F	12.9 %
8 . Viet Nam	259.3	330.0 F	316.0	340.0 F	377.5	3.0 %
SOUTH ASIA						
9 . Bangladesh	1 379.3	2 762.0	2 933.0	3 216.0	3 216.0 F	10.6 %
10 . Bhutan	34.1 F	34.1 F	34.1 F	34.1 F	22.0	-2.0 %
11 . India	16 387.9	23 610.7	24 713.2	22 142.7	24 000.0	4.7 %
12 . Maldives						
13 . Nepal	732.9	1 091.2	1 182.5	1 313.7	1 472.8	7.2 %
14 . Pakistan	859.8	1 810.4	1 868.4	1 666.1	1 721.6	8.3 %
15 . Sri Lanka	78.6	27.2	48.4	57.7	57.7 F	-6.9 %
CENTRAL ASIA						
16 . Kazakhstan	2 569.7	1 694.7	1 692.6	2 185.0	2 257.0	-1.5 %
17 . Tajikistan	167.4	239.6	303.2	318.0	400.0	11.4 %
18 . Uzbekistan	365.3	657.8	731.1	735.5	730.0 F	6.7 %
OTHER ASIA						
19 . China	37 826.2	56 141.1	66 325.2	64 596.1	65 052.1 *	5.5 %
20 . DPR Korea	867.0	1 473.0 *	1 870.0	2 268.0	1 884.0	17.5 %
21 . Iran (Islamic Rep. of)	2 708.3	3 433.1	3 658.0	3 485.8	3 500.0 F	2.1 %
22 . Mongolia	78.5	63.8	58.9	58.0	65.6	0.0 %
23 . Rep.of Korea	726.1	678.3	704.6	605.0	750.0 F	1.1 %
PACIFIC ISLANDS						
24 . Cook Islands						
25 . Fiji Islands	.09	.08 F	.08 F	.08 F	.08 F	2.8 %
26 . Kiribati						
27 . Marshall Islands						
28 . Nauru						
29 . Niue						
30 . Palau						
31 . Papua New Guinea	.34 F	.50 F	.54 F	.54 F	.54 F	5.1 %
32 . Samoa						
33 . Solomon Islands						
34 . Tonga						
35 . Vanuatu						
SUB-TOTAL	66 029.3	95 412.9	107 859.3	104 479.4	106 862.5	5.2 %
<b>DEVELOPED COUNTRIES</b>						
36 . Australia	1 150.1	1 326.8	1 199.6	1 250.0 F	1 260.0 F	1.2 %
37 . Japan	3 494.0	2 963.0	2 898.0	2 959.0	2 980.0 F	-1.9 %
38 . New Zealand	317.2	500.0	500.0	500.0	500.0	3.5 %
SUB-TOTAL	4 961.3	4 789.8	4 597.6	4 709.0	4 740.0	-0.6 %
ASIA & PACIFIC*	70 990.6	100 202.7	112 457.0	109 188.4	111 602.5	4.9 %
REST OF WORLD	205 790.3	200 694.9	216 904.2	202 654.8	195 838.0	-0.4 %
WORLD	276 780.9	300 897.6	329 361.2	311 843.2	307 440.4	1.2 %

**Table 34. Potatoes : yield**

Unit: kg/ha

Country	1992	1999	2000	2001	2002	Annual Growth Rate 1992 - 2002
<b>DEVELOPING COUNTRIES</b>						
SOUTHEAST ASIA						
1 . Cambodia						
2 . Indonesia	14 381.9	14 719.9	13 375.9	13 514.7	13 076.9	-1.7 %
3 . Lao PDR	7 000.0	6 600.0	6 226.4	6 181.8	6 363.6	-0.9 %
4 . Malaysia						
5 . Myanmar	10 148.2	10 438.2	9 902.0	10 866.2	10 866.2	1.0 %
6 . Philippines	13 017.7	12 129.7	12 279.9	12 390.4	12 363.6	-1.5 %
7 . Thailand	8 571.4	15 403.4	12 992.0	12 010.0	12 010.0	5.3 %
8 . Viet Nam	10 089.5	11 785.7	11 275.1	11 333.3	11 758.5	2.1 %
SOUTH ASIA						
9 . Bangladesh	10 793.1	11 281.0	12 059.1	12 916.3	12 916.3	1.8 %
10 . Bhutan	13 640.0	13 640.0	13 640.0	13 640.0	7 096.8	-2.9 %
11 . India	15 904.4	17 880.1	18 442.7	18 280.1	17 021.3	1.5 %
12 . Maldives						
13 . Nepal	8 591.6	9 259.9	9 643.6	10 182.4	10 901.8	2.2 %
14 . Pakistan	11 370.9	16 541.3	16 908.6	16 414.8	16 365.0	3.8 %
15 . Sri Lanka	11 010.8	12 520.7	13 292.2	13 571.8	13 571.8	2.3 %
CENTRAL ASIA						
16 . Kazakhstan	10 592.3	10 842.6	10 638.6	13 323.2	13 889.2	3.1 %
17 . Tajikistan	12 876.9	11 712.4	11 903.7	13 233.0	17 391.3	0.3 %
18 . Uzbekistan	8 509.2	13 562.9	14 005.8	14 478.4	14 313.7	5.1 %
OTHER ASIA						
19 . China	12 624.7	12 699.6	14 036.0	13 684.1	14 778.8	0.5 %
20 . DPR Korea	12 041.7	7 877.0	9 946.8	12 083.1	9 515.2	-1.4 %
21 . Iran (Islamic Rep. of)	16 287.9	20 929.5	21 662.9	19 968.9	20 000.0	0.7 %
22 . Mongolia	9 023.0	7 282.4	7 472.7	6 639.9	7 183.1	-1.0 %
23 . Rep.of Korea	20 987.7	24 525.6	23 954.6	24 502.9	30 000.0	2.2 %
PACIFIC ISLANDS						
24 . Cook Islands						
25 . Fiji Islands	8 454.5	8 000.0	8 000.0	8 000.0	8 000.0	2.1 %
26 . Kiribati						
27 . Marshall Islands						
28 . Nauru						
29 . Niue						
30 . Palau						
31 . Papua New Guinea	4 533.3	4 166.7	4 153.9	4 153.9	4 153.9	-1.3 %
32 . Samoa						
33 . Solomon Islands						
34 . Tonga						
35 . Vanuatu						
AVERAGE	11 384.1	12 445.4	12 536.9	12 789.5	12 888.0	1.1 %
<b>DEVELOPED COUNTRIES</b>						
36 . Australia	28 922.0	32 126.5	28 452.7	29 761.9	30 000.0	0.3 %
37 . Japan	31 364.5	30 327.5	30 634.3	31 817.2	30 408.2	-0.1 %
38 . New Zealand	39 650.0	41 666.7	42 315.5	50 000.0	50 000.0	1.1 %
AVERAGE	33 312.2	34 706.9	33 800.8	37 193.0	36 802.7	0.6 %
ASIA & PACIFIC*	13 737.3	14 087.7	15 050.9	14 864.7	15 400.8	0.6 %
REST OF WORLD	15 667.6	15 982.3	17 190.4	16 459.4	16 578.5	0.4 %
WORLD	15 122.6	15 297.2	16 394.7	15 863.5	16 130.7	0.3 %

**Table 35. Potatoes : area harvested**

Unit: 1000 ha

Country	1992	1999	2000	2001	2002	Annual Growth Rate 1992 - 2002
<b>DEVELOPING COUNTRIES</b>						
SOUTHEAST ASIA						
1 . Cambodia						
2 . Indonesia	48.9	62.8	73.1	70.6	65.0 F	3.2 %
3 . Lao PDR	5.0 F	5.0 F	5.3 F	5.5 F	5.5 F	1.2 %
4 . Malaysia						
5 . Myanmar	15.4	23.4	25.7	29.3	29.3 F	7.7 %
6 . Philippines	5.0	5.2	5.2	5.3	5.5 F	0.0 %
7 . Thailand	3.5 F	6.5 F	7.0 F	7.0 F	7.0 F	7.2 %
8 . Viet Nam	25.7	28.0 F	28.0	30.0 F	32.1	0.9 %
SOUTH ASIA						
9 . Bangladesh	127.8	244.8	243.2	249.0	249.0 F	8.6 %
10 . Bhutan	2.5 F	2.5 F	2.5 F	2.5 F	3.1	1.0 %
11 . India	1 030.4	1 320.5	1 340.0	1 211.3	1 410.0	3.1 %
12 . Maldives						
13 . Nepal	85.3	117.8	122.6	129.0	135.1	4.9 %
14 . Pakistan	75.6	109.4	110.5	101.5	105.2	4.4 %
15 . Sri Lanka	7.1	2.2	3.6	4.3	4.3 F	-9.0 %
CENTRAL ASIA						
16 . Kazakhstan	242.6	156.3	159.1	164.0	162.5	-4.5 %
17 . Tajikistan	13.0	20.5	25.5	24.0	23.0 F	11.1 %
18 . Uzbekistan	42.9	48.5	52.2	50.8	51.0 F	1.5 %
OTHER ASIA						
19 . China	2 996.2	4 420.7	4 725.4	4 720.5	4 401.7 F	5.0 %
20 . DPR Korea	72.0 F	187.0	188.0	187.7	198.0	19.1 %
21 . Iran (Islamic Rep. of)	166.3	164.0	168.9	174.6	175.0 F	1.4 %
22 . Mongolia	8.7	8.8	7.9	8.7	9.1	1.0 %
23 . Rep.of Korea	34.6	27.7	29.4	24.7	25.0 F	-1.1 %
PACIFIC ISLANDS						
24 . Cook Islands						
25 . Fiji Islands	.01	.01 F	.01 F	.01 F	.01 F	0.6 %
26 . Kiribati						
27 . Marshall Islands						
28 . Nauru						
29 . Niue						
30 . Palau						
31 . Papua New Guinea	.08 F	.12 F	.13 F	.13 F	.13 F	6.5 %
32 . Samoa						
33 . Solomon Islands						
34 . Tonga						
35 . Vanuatu						
SUB-TOTAL	5 008.6	6 961.8	7 323.2	7 200.5	7 096.5	4.4 %
<b>DEVELOPED COUNTRIES</b>						
36 . Australia	39.8	41.3	42.2	42.0 F	42.0 F	0.9 %
37 . Japan	111.4	97.7	94.6	93.0	98.0 F	-1.7 %
38 . New Zealand	8.0 F	12.0	11.8	10.0	10.0	2.4 %
SUB-TOTAL	159.2	151.0	148.6	145.0	150.0	-0.8 %
ASIA & PACIFIC*	5 167.7	7 112.8	7 471.8	7 345.5	7 246.5	4.3 %
REST OF WORLD	13 134.8	12 557.3	12 617.8	12 312.4	11 812.8	-0.7 %
WORLD	18 302.5	19 670.1	20 089.5	19 657.9	19 059.3	0.9 %

**Table 36. Taro : production**

Unit: 1000 MT

Country	1992	1999	2000	2001	2002	Annual Growth Rate 1992 - 2002
<b>DEVELOPING COUNTRIES</b>						
SOUTHEAST ASIA						
1 . Cambodia						
2 . Indonesia						
3 . Lao PDR						
4 . Malaysia						
5 . Myanmar						
6 . Philippines	96.6	97.3	95.9	96.9	96.9 F	1.8 %
7 . Thailand	56.0 F	56.0 F	56.0 F	61.6 F	61.6 F	1.0 %
8 . Viet Nam						
SOUTH ASIA						
9 . Bangladesh						
10 . Bhutan						
11 . India						
12 . Maldives	.8 F	.3	.2	.3	.3 F	-12.9 %
13 . Nepal						
14 . Pakistan						
15 . Sri Lanka						
CENTRAL ASIA						
16 . Kazakhstan						
17 . Tajikistan						
18 . Uzbekistan						
OTHER ASIA						
19 . China	1 276.2 F	1 493.1 F	1 540.7 F	1 547.6 F	1 547.6 F	2.1 %
20 . DPR Korea						
21 . Iran (Islamic Rep. of)						
22 . Mongolia						
23 . Rep.of Korea	.0	.0	.0	.0	.0	0.0 %
PACIFIC ISLANDS						
24 . Cook Islands						
25 . Fiji Islands	5.88	25.91	30.26	37.88	37.88 F	21.4 %
26 . Kiribati	1.40 F	1.60	1.60 F	1.70 F	1.70 F	1.9 %
27 . Marshall Islands						
28 . Nauru						
29 . Niue	3.00 F	3.20 F	3.20 F	3.20 F	3.20 F	0.3 %
30 . Palau						
31 . Papua New Guinea	205.00 F	170.00 F	172.00 F	174.00 F	174.00 F	-2.0 %
32 . Samoa	10.00 F	20.00 F	15.00	15.00	17.00	10.3 %
33 . Solomon Islands	28.80 F	32.00 F	34.00 F	36.00 F	36.00 F	3.1 %
34 . Tonga	12.58	3.24	3.72	3.70 F	3.70 F	-14.3 %
35 . Vanuatu						
SUB-TOTAL	1 696.2	1 902.6	1 952.6	1 977.9	1 979.9	1.8 %
<b>DEVELOPED COUNTRIES</b>						
36 . Australia						
37 . Japan	304.6	247.7	230.5	218.1	210.0 F	-2.9 %
38 . New Zealand						
SUB-TOTAL	304.6	247.7	230.5	218.1	210.0	-2.9 %
ASIA & PACIFIC*	2 000.8	2 150.3	2 183.1	2 196.0	2 189.9	1.2 %
REST OF WORLD	3 252.6	6 704.9	6 701.6	6 820.6	7 030.7	9.8 %
WORLD	5 253.5	8 855.1	8 884.8	9 016.6	9 220.5	7.1 %

**Table 37. Taro : yield**

Unit: kg/ha

Country	1992	1999	2000	2001	2002	Annual Growth Rate 1992 - 2002
<b>DEVELOPING COUNTRIES</b>						
SOUTHEAST ASIA						
1 . Cambodia						
2 . Indonesia						
3 . Lao PDR						
4 . Malaysia						
5 . Myanmar						
6 . Philippines	3 448.3	5 308.6	5 329.9	5 367.5	5 367.5	6.3 %
7 . Thailand	10 980.4	11 200.0	11 200.0	11 200.0	11 200.0	0.3 %
8 . Viet Nam						
SOUTH ASIA						
9 . Bangladesh						
10 . Bhutan						
11 . India						
12 . Maldives	10 000.0	5 075.5	2 353.7	5 800.0	5 800.0	-10.2 %
13 . Nepal						
14 . Pakistan						
15 . Sri Lanka						
CENTRAL ASIA						
16 . Kazakhstan						
17 . Tajikistan						
18 . Uzbekistan						
OTHER ASIA						
19 . China	15 153.9	17 431.8	17 799.1	17 812.6	17 812.6	1.6 %
20 . DPR Korea						
21 . Iran (Islamic Rep. of)						
22 . Mongolia						
23 . Rep.of Korea						
PACIFIC ISLANDS						
24 . Cook Islands						
25 . Fiji Islands	3 167.7	19 063.3	9 480.3	12 219.4	12 219.4	15.7 %
26 . Kiribati	4 000.0	4 210.5	4 210.5	4 250.0	4 250.0	0.6 %
27 . Marshall Islands						
28 . Nauru						
29 . Niue	6 976.7	7 441.9	7 441.9	7 441.9	7 441.9	0.3 %
30 . Palau						
31 . Papua New Guinea	6 406.3	5 483.9	5 375.0	5 437.5	5 437.5	-2.4 %
32 . Samoa	4 000.0	4 702.6	5 000.0	5 000.0	4 857.1	3.2 %
33 . Solomon Islands	22 153.9	20 000.0	20 000.0	20 000.0	20 000.0	-1.2 %
34 . Tonga	7 281.4	6 864.4	7 440.0	9 250.0	9 250.0	-0.4 %
35 . Vanuatu						
AVERAGE	7 797.4	8 898.5	7 969.2	8 648.2	8 636.3	0.5 %
<b>DEVELOPED COUNTRIES</b>						
36 . Australia						
37 . Japan	12 184.0	11 795.2	12 260.6	12 829.4	12 352.9	0.2 %
38 . New Zealand						
AVERAGE	12 184.0	11 795.2	12 260.6	12 829.4	12 352.9	0.2 %
ASIA & PACIFIC*	10 959.9	12 683.8	12 868.8	13 023.4	12 948.8	1.6 %
REST OF WORLD	4 131.2	5 236.7	5 227.8	5 237.7	5 012.1	2.7 %
WORLD	5 416.5	6 107.4	6 120.8	6 130.2	5 866.0	1.3 %

**Table 38. Taro : area harvested**

Unit: 1000 ha

Country	1992	1999	2000	2001	2002	Annual Growth Rate 1992 - 2002
<b>DEVELOPING COUNTRIES</b>						
SOUTHEAST ASIA						
1 . Cambodia						
2 . Indonesia						
3 . Lao PDR						
4 . Malaysia						
5 . Myanmar						
6 . Philippines	28.0 F	18.3	18.0	18.0	18.0 F	-4.3 %
7 . Thailand	5.1 F	5.0 F	5.0 F	5.5 F	5.5 F	0.8 %
8 . Viet Nam						
SOUTH ASIA						
9 . Bangladesh						
10 . Bhutan						
11 . India						
12 . Maldives	.1 F	.1	.1	.1 F	.1 F	-3.1 %
13 . Nepal						
14 . Pakistan						
15 . Sri Lanka						
CENTRAL ASIA						
16 . Kazakhstan						
17 . Tajikistan						
18 . Uzbekistan						
OTHER ASIA						
19 . China	84.2 F	85.7 F	86.6 F	86.9 F	86.9 F	0.5 %
20 . DPR Korea						
21 . Iran (Islamic Rep. of)						
22 . Mongolia						
23 . Rep.of Korea	.0	.0	.0	.0	.0	0.0 %
PACIFIC ISLANDS						
24 . Cook Islands						
25 . Fiji Islands	1.86	1.36	3.19	3.10	3.10 F	4.9 %
26 . Kiribati	.35 F	.38	.38 F	.40 F	.40 F	1.4 %
27 . Marshall Islands						
28 . Nauru						
29 . Niue	.43 F	.43 F	.43 F	.43 F	.43 F	0.0 %
30 . Palau						
31 . Papua New Guinea	32.00 F	31.00 F	32.00 F	32.00 F	32.00 F	0.5 %
32 . Samoa	2.50 F	4.25	3.00	3.00	3.50	6.8 %
33 . Solomon Islands	1.30 F	1.60 F	1.70 F	1.80 F	1.80 F	4.4 %
34 . Tonga	1.73	.47	.50 F	.40 F	.40 F	-14.0 %
35 . Vanuatu						
SUB-TOTAL	157.6	148.5	150.8	151.6	152.1	-0.1 %
<b>DEVELOPED COUNTRIES</b>						
36 . Australia						
37 . Japan	25.0	21.0	18.8	17.0 F	17.0 F	-3.1 %
38 . New Zealand						
SUB-TOTAL	25.0	21.0	18.8	17.0	17.0	-3.1 %
ASIA & PACIFIC*	182.6	169.5	169.6	168.6	169.1	-0.4 %
REST OF WORLD	787.3	1 280.4	1 281.9	1 302.2	1 402.7	6.9 %
WORLD	969.9	1 449.9	1 451.6	1 470.8	1 571.9	5.8 %

**Table 39. Roots and tubers : production**

Unit: 1000 MT

Country	1992	1999	2000	2001	2002	Annual Growth Rate 1992 - 2002
<b>DEVELOPING COUNTRIES</b>						
SOUTHEAST ASIA						
1 . Cambodia	226.0	279.5	194.9	188.5	232.3	4.5 %
2 . Indonesia	19 709.5	19 377.7	19 244.5	20 107.9	19 669.6	-0.1 %
3 . Lao PDR	207.1	184.6	221.5	205.8	207.0 F	-0.7 %
4 . Malaysia	520.7 F	469.0 F	466.0 F	465.0 F	455.0 F	-1.6 %
5 . Myanmar	223.9	363.3	370.1	472.8	472.8 F	8.1 %
6 . Philippines	2 801.5	2 823.6	2 697.8	2 569.6	2 575.5	-1.1 %
7 . Thailand	20 590.0	16 817.9	19 357.9	18 696.0	17 170.0	-1.2 %
8 . Viet Nam	5 420.2	3 875.1	3 913.6	4 801.3	6 260.3	-0.3 %
SOUTH ASIA						
9 . Bangladesh	1 849.5	3 145.0	3 311.0	3 573.0	3 562.0	8.3 %
10 . Bhutan	55.1 F	55.9 F	55.9 F	55.9 F	43.8	-1.0 %
11 . India	23 351.1	31 463.1	32 520.6	30 242.7	32 100.0	3.9 %
12 . Maldives	7.4	7.4	7.8	8.3	8.3 F	0.7 %
13 . Nepal	873.9	1 191.2	1 282.5	1 418.7	1 576.8	6.1 %
14 . Pakistan	1 212.9	2 239.7	2 307.5	2 115.3	2 170.7	6.9 %
15 . Sri Lanka	440.9	330.3	349.3	339.8	340.2 F	-3.5 %
CENTRAL ASIA						
16 . Kazakhstan	2 569.7	1 694.7	1 692.6	2 185.0	2 257.0	-1.5 %
17 . Tajikistan	167.4	239.6	303.2	318.0	400.0	11.4 %
18 . Uzbekistan	365.3	657.8	731.1	735.5	730.0 F	6.7 %
OTHER ASIA						
19 . China	147 121.2	187 542.5	189 856.8	183 794.6	184 754.6	2.2 %
20 . DPR Korea	1 155.0	1 963.0 *	2 160.0	2 588.0	2 224.0	15.7 %
21 . Iran (Islamic Rep. of)	2 708.3	3 433.1	3 658.0	3 485.8	3 500.0 F	2.1 %
22 . Mongolia	78.5	63.8	58.9	58.0	65.6	0.0 %
23 . Rep.of Korea	1 040.9	1 106.4	1 049.5	878.1	1 000.0	0.9 %
PACIFIC ISLANDS						
24 . Cook Islands	10.18	6.40 F	6.40 F	6.40 F	6.40 F	-3.2 %
25 . Fiji Islands	19.45	63.45	77.02	85.50	85.91 F	15.4 %
26 . Kiribati	7.60 F	8.80	8.60 F	8.90 F	8.90 F	1.9 %
27 . Marshall Islands						
28 . Nauru						
29 . Niue	3.40 F	3.61 F	3.61 F	3.61 F	3.61 F	0.3 %
30 . Palau						
31 . Papua New Guinea	1 270.34	1 260.50	1 279.54	1 301.54 F	1 301.54 F	0.3 %
32 . Samoa	14.05 F	25.60 F	20.60	20.60	22.70	7.7 %
33 . Solomon Islands	112.60 F	133.60 F	144.80 F	153.80 F	153.80 F	3.6 %
34 . Tonga	55.50	27.30	26.33	23.17 F	23.17 F	-11.4 %
35 . Vanuatu	38.00 F	44.00 F	45.00 F	45.00 F	45.00 F	2.3 %
SUB-TOTAL	234 227.0	280 897.4	287 422.8	280 952.2	283 426.5	2.0 %
<b>DEVELOPED COUNTRIES</b>						
36 . Australia	1 156.1	1 332.8	1 205.6	1 256.0 F	1 266.0 F	1.2 %
37 . Japan	5 334.4	4 486.7	4 478.6	4 516.1	4 496.0	-1.7 %
38 . New Zealand	336.6	517.0	517.5	516.0	516.0	3.2 %
SUB-TOTAL	6 827.1	6 336.5	6 201.7	6 288.1	6 278.0	-0.8 %
ASIA & PACIFIC*	241 054.4	287 234.2	293 624.8	287 240.6	289 704.8	1.9 %
REST OF WORLD	361 876.8	386 326.2	408 175.8	398 576.7	395 024.3	1.0 %
WORLD	602 931.1	673 560.4	701 800.6	685 817.3	684 729.1	1.4 %

**Table 40. Roots and tubers : yield**

Unit: kg/ha

Country	1992	1999	2000	2001	2002	Annual Growth Rate 1992 - 2002
<b>DEVELOPING COUNTRIES</b>						
SOUTHEAST ASIA						
1 . Cambodia	8 370.4	11 214.8	7 968.2	8 436.5	8 675.8	3.7 %
2 . Indonesia	11 635.1	11 736.7	11 900.8	12 294.6	12 363.0	0.7 %
3 . Lao PDR	8 469.7	7 939.8	7 408.0	7 615.1	7 661.0	-1.5 %
4 . Malaysia	9 696.5	9 305.6	9 338.7	9 356.1	9 154.9	-0.6 %
5 . Myanmar	9 025.0	9 931.6	9 244.5	10 071.7	10 071.7	1.4 %
6 . Philippines	6 855.6	6 727.2	6 704.5	6 343.0	6 347.7	-0.7 %
7 . Thailand	13 977.7	15 442.0	16 760.1	17 812.8	16 270.8	2.5 %
8 . Viet Nam	7 587.1	7 400.9	7 527.2	8 914.4	10 406.0	2.5 %
SOUTH ASIA						
9 . Bangladesh	10 476.9	10 992.1	11 654.6	12 395.1	12 409.3	1.7 %
10 . Bhutan	10 596.2	10 750.0	10 750.0	10 750.0	7 551.7	-1.5 %
11 . India	16 470.0	18 261.7	18 863.5	18 711.1	17 686.0	1.4 %
12 . Maldives	4 516.9	4 620.6	4 448.1	4 595.6	4 595.6	-0.5 %
13 . Nepal	7 712.8	8 641.9	8 992.4	9 456.9	9 910.9	2.4 %
14 . Pakistan	12 453.4	16 556.8	16 864.1	16 450.8	16 406.5	2.8 %
15 . Sri Lanka	8 606.4	8 261.1	8 429.1	8 624.4	8 591.4	-0.6 %
CENTRAL ASIA						
16 . Kazakhstan	10 592.3	10 842.6	10 638.6	13 323.2	13 889.2	3.1 %
17 . Tajikistan	12 876.9	11 712.4	11 903.7	13 233.0	17 391.3	0.3 %
18 . Uzbekistan	8 509.2	13 562.9	14 005.8	14 478.4	14 313.7	5.1 %
OTHER ASIA						
19 . China	15 364.6	17 546.4	17 457.5	17 411.8	17 204.1	0.8 %
20 . DPR Korea	12 554.4	8 783.0	10 237.0	11 998.2	9 754.4	-1.6 %
21 . Iran (Islamic Rep. of)	16 287.9	20 929.5	21 662.9	19 968.9	20 000.0	0.7 %
22 . Mongolia	9 023.0	7 282.4	7 472.7	6 639.9	7 183.1	-1.0 %
23 . Rep.of Korea	20 703.1	23 162.7	23 033.6	23 472.9	27 027.0	1.9 %
PACIFIC ISLANDS						
24 . Cook Islands	29 507.3	20 000.0	20 000.0	20 000.0	20 000.0	-2.5 %
25 . Fiji Islands	3 160.7	12 073.8	9 705.7	10 773.1	10 825.7	15.5 %
26 . Kiribati	7 835.1	8 148.2	8 113.2	8 090.9	8 090.9	0.4 %
27 . Marshall Islands						
28 . Nauru						
29 . Niue	5 873.9	6 206.5	6 206.5	6 206.5	6 206.5	0.3 %
30 . Palau						
31 . Papua New Guinea	7 369.6	7 218.5	7 223.7	7 245.7	7 245.7	-0.2 %
32 . Samoa	4 296.6	4 869.7	5 144.9	5 144.9	5 017.7	2.0 %
33 . Solomon Islands	18 016.0	16 847.4	16 955.5	16 645.0	16 645.0	-0.8 %
34 . Tonga	11 964.4	12 106.4	11 968.2	11 821.4	11 821.4	-0.7 %
35 . Vanuatu	8 444.4	8 800.0	8 181.8	8 181.8	8 181.8	-0.2 %
AVERAGE	10 900.9	11 496.1	11 461.4	11 764.5	11 840.6	0.9 %
<b>DEVELOPED COUNTRIES</b>						
36 . Australia	28 735.1	32 000.6	28 359.6	29 657.6	29 893.7	0.4 %
37 . Japan	25 892.6	25 362.9	26 138.7	27 205.4	26 338.6	0.4 %
38 . New Zealand	36 989.0	39 769.2	39 725.2	46 071.4	46 071.4	0.9 %
AVERAGE	30 538.9	32 377.6	31 407.8	34 311.5	34 101.3	0.6 %
ASIA & PACIFIC*	14 239.4	16 011.7	16 173.9	16 260.2	16 002.0	1.1 %
REST OF WORLD	11 340.1	11 367.6	11 791.6	11 345.7	11 272.5	-0.1 %
WORLD	12 345.0	12 972.1	13 299.2	12 990.1	12 883.6	0.4 %

**Table 41. Roots and tubers : area harvested**

Unit: 1000 ha

Country	1992	1999	2000	2001	2002	Annual Growth Rate 1992 - 2002
<b>DEVELOPING COUNTRIES</b>						
SOUTHEAST ASIA						
1 . Cambodia	27.0	24.9	24.5	22.3	26.8	0.8 %
2 . Indonesia	1 694.0	1 651.0	1 617.1	1 635.5	1 591.0 F	-0.8 %
3 . Lao PDR	24.5	23.3	29.9	27.0	27.0 F	0.9 %
4 . Malaysia	53.7 F	50.4 F	49.9 F	49.7 F	49.7 F	-1.1 %
5 . Myanmar	24.8	36.6	40.0	46.9	46.9 F	6.6 %
6 . Philippines	408.6	419.7	402.4	405.1	405.7 F	-0.4 %
7 . Thailand	1 473.1	1 089.1	1 155.0	1 049.6	1 055.3 F	-3.6 %
8 . Viet Nam	714.4	523.6	519.9	538.6	601.6	-2.7 %
SOUTH ASIA						
9 . Bangladesh	176.5	286.1	284.1	288.3	287.0	6.4 %
10 . Bhutan	5.2 F	5.2 F	5.2 F	5.2 F	5.8	0.5 %
11 . India	1 417.8	1 722.9	1 724.0	1 616.3	1 815.0	2.5 %
12 . Maldives	1.6 F	1.6	1.7	1.8 F	1.8 F	1.2 %
13 . Nepal	113.3	137.8	142.6	150.0	159.1	3.5 %
14 . Pakistan	97.4	135.3	136.8	128.6	132.3	3.9 %
15 . Sri Lanka	51.2	40.0	41.4	39.4	39.6 F	-2.9 %
CENTRAL ASIA						
16 . Kazakhstan	242.6	156.3	159.1	164.0	162.5	-4.5 %
17 . Tajikistan	13.0	20.5	25.5	24.0	23.0 F	11.1 %
18 . Uzbekistan	42.9	48.5	52.2	50.8	51.0 F	1.5 %
OTHER ASIA						
19 . China	9 575.3	10 688.4	10 875.4	10 555.8	10 739.0 F	1.4 %
20 . DPR Korea	92.0 F	223.5	211.0	215.7	228.0	17.6 %
21 . Iran (Islamic Rep. of)	166.3	164.0	168.9	174.6	175.0 F	1.4 %
22 . Mongolia	8.7	8.8	7.9	8.7	9.1	1.0 %
23 . Rep. of Korea	50.3	47.8	45.6	37.4	37.0	-1.0 %
PACIFIC ISLANDS						
24 . Cook Islands	.35	.32 F	.32 F	.32 F	.32 F	-0.7 %
25 . Fiji Islands	6.16	5.26	7.94	7.94	7.94 F	-0.1 %
26 . Kiribati	.97 F	1.08	1.06 F	1.10 F	1.10 F	1.5 %
27 . Marshall Islands						
28 . Nauru						
29 . Niue	.58 F	.58 F	.58 F	.58 F	.58 F	0.0 %
30 . Palau						
31 . Papua New Guinea	172.38	174.62	177.13	179.63 F	179.63 F	0.5 %
32 . Samoa	3.27 F	5.26	4.00	4.00	4.52	5.5 %
33 . Solomon Islands	6.25 F	7.93 F	8.54 F	9.24 F	9.24 F	4.5 %
34 . Tonga	4.64	2.26	2.20	1.96 F	1.96 F	-10.8 %
35 . Vanuatu	4.50 F	5.00 F	5.50 F	5.50 F	5.50 F	2.5 %
SUB-TOTAL	16 673.3	17 707.5	17 927.3	17 445.7	17 880.1	0.8 %
<b>DEVELOPED COUNTRIES</b>						
36 . Australia	40.2	41.6	42.5	42.4 F	42.4 F	0.8 %
37 . Japan	206.0	176.9	171.3	166.0	170.7 F	-2.0 %
38 . New Zealand	9.1 F	13.0	13.0	11.2	11.2	2.2 %
SUB-TOTAL	255.4	231.5	226.9	219.6	224.3	-1.4 %
ASIA & PACIFIC*	16 928.7	17 939.1	18 154.2	17 665.2	18 104.4	0.8 %
REST OF WORLD	31 911.4	33 984.9	34 615.9	35 130.4	35 043.1	1.1 %
WORLD	48 840.0	51 923.9	52 770.1	52 795.6	53 147.5	1.0 %