



**METADATA FOR
NATIONAL AGRICULTURAL STATISTICS**

SRI LANKA

TABLE OF CONTENTS

	Page
List of Acronyms	iii
CHAPTER 1. NATIONAL SYSTEM OF AGRICULTURAL STATISTICS	
1.1 Legal Framework and Statistical Advisory Bodies	1
1.2 Structure and Organization of Major Agricultural Statistical Agencies	2
1.3 Outputs and Dissemination of Agricultural Statistics.....	6
1.4 Dialogue with Data Users and Cooperation with International Organizations..	9
1.5 Strategic Framework.....	9
CHAPTER 2. MAJOR DOMAINS AND SELECTED INDICATORS OF AGRICULTURAL STATISTICS	
2.1 List of Major Domains and Selected Statistics and Indicators	10
2.2 Metadata for Each of the Major Domains.....	10
2.2.1 Production	
2.2.1.1 Concepts, Definitions and Classifications	10
2.2.1.2 Coverage, Availability, Data Sources and Responsible Agencies ..	12
2.2.1.3 Data Processing, Estimation and Revision Methodology	12
2.2.1.4 Other Reference Information	13
2.2.2 Prices	
2.2.2.1 Concepts, Definitions and Classifications	13
2.2.2.2 Coverage, Availability and Responsible Agencies	13
2.2.2.3 Data Processing, Estimation and Revision Methodology	14
2.2.2.4 Other Reference Information	14
2.2.3 Trade	
2.2.3.1 Concepts, Definitions and Classifications	15
2.2.3.2 Coverage, Availability and Responsible Agencies	15
2.2.4 Food Consumption/Food Availability	
2.2.4.1 Concepts, Definitions and Classifications	15
2.2.4.2 Coverage, Availability and Responsible Agencies	17
2.2.4.3 Data Processing, Estimation and Revision Methodology	17
2.2.4.4 Other Reference Information	17
CHAPTER 3. MAJOR DATA SOURCES FOR AGRICULTURAL STATISTICS	
3.1 List of Major Agricultural Censuses, Surveys and Registers	18
3.2 Metadata for Each of the Major Censuses.....	18
3.2.1 Census of Agriculture	
3.2.1.1 Overview	18
3.2.1.2 Census Design	22
3.2.1.3 Conduct, Operations, Data Quality Control	22
3.2.1.4 Statistical Report	22
3.2.2 Census of Population and Housing 2001	
3.2.2.1 Overview	23

3.2.2.2 Census Design	23
3.2.2.3 Conduct, Operations, Data Quality Control	25
3.2.2.4 Statistical Report	25
3.3 Metadata for Each of the Major Surveys	
3.3.1 Bi- Annual Crop Cutting Survey on Paddy	
3.3.1.1 Overview	25
3.3.1.2 Survey Design	26
3.3.1.3 Conduct, Operations, Data Quality Control	27
3.3.1.4 Statistical Report	27
3.3.2 Rapid Appraisal Surveys- Sample Survey on Potatoes and Big Onion	
3.3.2.1 Overview	27
3.3.3 Subsidiary Food Crops and Other Highland Crop Statistics	
3.3.3.1 Conduct, Operations, Data Quality Control	28
3.3.4 Cost of Production of Major Plantation Crops (COP)	
3.3.4.1 Conduct, Operations, Data Quality Control	28
3.4 Metadata for Each of the Major Administrative Register	
3.4.1 Cost of Cultivation of Seasonal Crops	
3.4.1.1 Responsible Agency	29
3.4.1.2 Description of the Contained Information	29
3.4.2 Trade Statistics	
3.4.2.1 Responsible Agency	29
3.4.2.2 Description of the Contained Information	30
3.4.3 Extent and Production of Major Plantation Crops	
3.4.3.1 Responsible Agency	30
3.4.3.2 Description of the Contained Information	31

List of Acronyms

COP	Cost of Production
DCS	Department of Census and Statistics
DS	Divisional Secretariat
FAO	Food and Agriculture Organization
FBS	Food Balance Sheet
GNN	Grama Niladari
HQ	Headquarter
RDES	Regional Data Exchange System
SPSS	Statistical Package for Social Sciences

CHAPTER 1. NATIONAL SYSTEM OF AGRICULTURAL STATISTICS

1.1 Legal Framework and Statistical Advisory Bodies

The legal authority under which the Department of Census and Statistics (DCS) of Sri Lanka operates is governed by two laws namely: the Census Ordinance 1956 (amended in 2000) and the Statistics Ordinance. These two ordinances explain the duties and responsibilities of the Head of the Department and the staff while collecting data through the means of censuses and surveys and these prevent any form of abusing rights or powers. The law dictates what the statistical agency is expected to do with the information when respondents submit to censuses and surveys. Respondents are asked to comply with the statistical agency's demands for information as long as they can be justified in the name of the objectives set by the law. In exchange for intrusion upon privacy rights, the statistical agency is required to safeguard respondents' information. If the agency breaks this commitment, its officers are subject to certain sanctions. If respondents do not comply, they too are subject to certain sanctions.

Census Ordinance

The first legal sanction in Sri Lanka provided under the Census Ordinance was framed in 1868 on the lines of the English law for the conduct of the first Census in 1871. This ordinance was amended in 1880 and also in 1900. These amendments made provisions for undertaking the Census with legal rights by accessing defined census units by the census officer and request for the information needed. These have also spelled out the obligations of respondents by giving answers to the best of their knowledge and belief. If the Census officers violate Census regulations or abuse of powers or respondents obstructing an officer in carrying out his duties, they are liable to be punished. The Census Ordinance has undergone with amendments in 1945, 1955, 1980 and 2000. The Census Ordinance covered not only the Census of Population and Housing but also Agriculture, Industry, Commerce etc. The amendments made in 1980 include the provision of legal sanctions for the confidentiality of the information collected at the Census. Thus, the Census Ordinance casts an obligation on the part of the respondents to answer all questions asked at a Census and at the same time it safeguards the respondents by causing any information collected at a Census to be inadmissible as evidence in a Court of law. Extract of the Census and Statistical law is annexed.

Statistics Ordinance

The Statistics Ordinance, which was enacted in 1935, provided for the establishment of an official Bureau of Statistics and for the supply of information thereto. This ordinance was amended in 1955. The Statistics Ordinance provided legal sanction for the Director of Census and Statistics to collect statistical information relating to the socio-economic conditions of the country. There was provision in this ordinance like in the Census Ordinance to safeguard the confidentiality of the information

provided by the respondent. The ordinance also prevented the disclosure of identity of any information in respect of an individual person for any purpose other than disseminating aggregate information for decision-making.

However, these ordinances did not spell out any mechanism for ensuring coordination between different agencies of the government that are engaged in data gathering.

In the absence of permanent advisory committee, some measures have been taken from time to time with a view to develop the statistical system and to maintain better coordination among agencies involved in data collection and also to have harmonized concepts in the collection and dissemination of statistical data. In this context, DCS has established a number of “Statistical Committees” to meet and discuss issues related to their respective fields. These Committees met regularly and discussed the problems that are faced by the branch offices coming under their purview. The committee system has helped to coordinate the work of these branch offices more effectively and to prevent any duplication. For instance, the Agricultural Committee is chaired by the Head of Agriculture and Environment Division of DCS and consists of statistical personnel representing the Ministry of Agriculture, Department of Agriculture, Ministry of Fisheries, Department of Export Agriculture, Department of Animal Production and Health, and the Department of Forestry. The committee reports are sent to the Head of the Department of Census and Statistics and the Chair Persons of the Committees brief the Director General.

1.2 Structure and Organization of the Major Statistical Agencies

The statistical system functioning in Sri Lanka is known to be a centralized one. The Department of Census and Statistics (DCS) as the National Statistical Office in Sri Lanka is mainly responsible for the collection, compilation and dissemination of statistical data requirements of the government. Apart from its responsibility of collecting and supplying data on the various sectors of the socio-economic conditions of the country, it recruits, trains and places professional staff in all government agencies requiring statistical services. In addition to that, it provides statistical consultancy services to the agencies requiring assistance on statistical matters through its technical divisions. As such, the DCS service as a focal point and performs the services of a central statistical agency.

The DCS is the main government statistical agency that is entrusted with the responsibilities of data collection pertaining to economic and social life of the inhabitants and dissemination, as well as coordination of, personnel recruitment and training for, and provision of technical services to, the entire statistical system. DCS is headed by a Director General with equivalent rank of Additional Secretary who at present reports directly to the Ministry of Finance and Planning. DCS is operating its functions through the 18 technical and service divisions housed in different locations in the city of Colombo. These divisions are headed by either Directors or Deputy Directors.

DCS operates its principal office and technical divisions in Colombo with an island wide network of field offices and field officers attached to district secretariats and Divisional Secretariats and also branch offices in key Ministries and Departments. The activities undertaken by the DCS are entrusted to 18 technical and service divisions as follows:

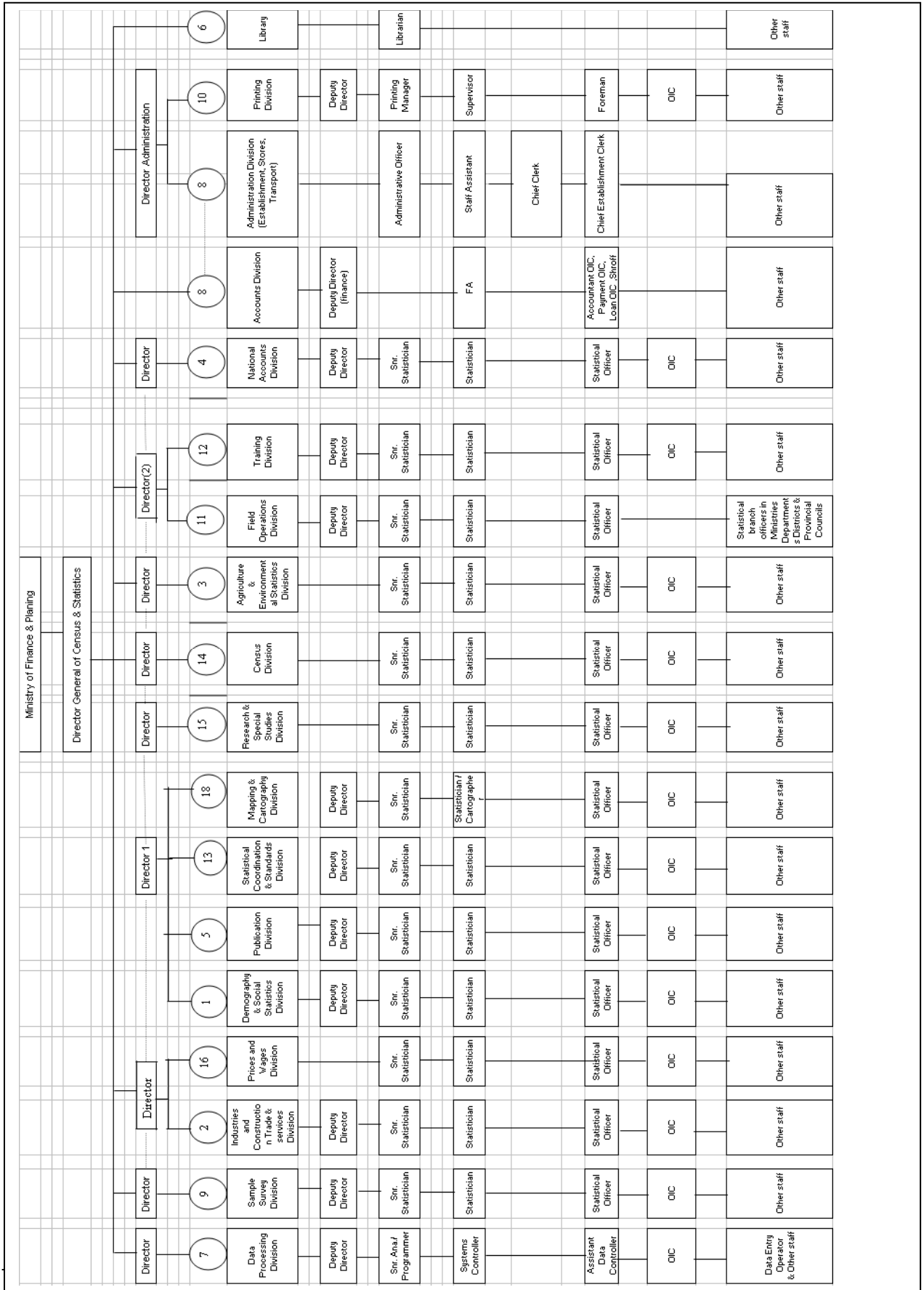
- Division 1 - Demography & Social Statistics Division
- Division 2 – Industries Division
- Division 3 - Agriculture & Environmental Statistics Division
- Division 4 - National Accounts Division
- Division 5 - Publication Division
- Division 6 - Library
- Division 7 - Data Processing Division
- Division 8 - Administration
- Division 9 - Sample Survey Division
- Division 10 - Printing Division
- Division 11 - Field Operation Division
- Division 12 - Training Division
- Division 13 - Statistical Coordination & Standards Division
- Division 14 - Census Division
- Division 15 - Research & Special Studies Division
- Division 16 - Prices and Wages Division
- Division 17 – Trade and Services Division
- Division 18 - Mapping & Cartography Division

The collection and compilation of data are performed through the staff attached to 25 District Statistical Offices, located in the District Secretariats. Each office is under the charge of a Deputy Director/Senior Statistician/ Statistician, who is assisted by a team of Statistical Officers attached to the Divisional Secretary's office. These officers are engaged in training and monitoring of data collection performed by primary reporters as well as they do collect data themselves for certain surveys that are entrusted to them by the technical divisions.

The DCS maintains 40 branch offices at present in various Ministries, Departments and other government agencies, which are placed in charge of either a Deputy Director, Senior Statistician, Statistician or Statistical Officer. The statistical personnel in these branch offices are under the immediate administrative control of

their respective Heads of Ministries, Departments, even though they belong to the cadre of the DCS. However, they obtain advice and guidance from the technical divisions of the DCS. DCS does not have a direct input in the development of the work plans of line ministries, but contributes to technical improvements to data collection activities in these ministries through the professional staff based in these branch offices. In theory, DCS HQ units have technical oversight of the statistical units in the line Ministries.

Please refer to the following page for the Organizational Chart of DCS.



1.3 Outputs and Dissemination of Agricultural Statistics

The division 3 i.e. Agriculture and Environment Statistics Division functioning under the umbrella of DCS is responsible for collection, compilation and dissemination of all types of agricultural information; comply with the vested power and legal authority under the Census ordinance and Statistical ordinance. The statistical programs undertaken by this division under the theme of Food and Agricultural Statistics are as follows:

1. Conducting annual/bi -annual sample surveys under current statistical program
2. Conducting adhoc surveys depending on national requirements.
3. Collection of statistics through administrative records.
4. Conducting the Census of Agriculture.

The agricultural statistical activities include the collection and compilation of statistics relating to:

1. Census of Agriculture and Livestock
2. Paddy (rice) statistics
 - a. Paddy extent
 - b. Estimation of average yield per acre of paddy
 - c. Paddy production
3. Highland Crop Statistics
4. Reconnaissance Surveys (Big onion, Potato)
5. Livestock data
6. Cost of Production of Major Plantation Crops (COP)
7. Food Balance Sheet (FBS)
8. Volume Index of Agricultural Production
9. Farmgate Prices

Contact Information of the Focal Point

Agriculture and Environment Statistics Division
Department of Census and Statistics Division
No. 30 Asoka Gardens, Colombo 4
Sri Lanka
Telephone: 941-1-2502953

E-mail: agriculture@statistics.gov.lk

Website: <http://www.statistics.gov.lk>

List of Publications Related to Agricultural Statistics

Title of Publication	Domains/ Contents	Medium	Format	Periodicity/ Frequency	Release Calendar
Census of Agriculture- 2002 (Small Holding Sector) Release No .1, 2, 3	Production	English	Hard Copies Website	Decennial	2003
Census of Agriculture- 2002 (Estate Sector Report)		English			2003
Census of Agriculture- 2002 (Small Holding Sector)- District-wise Reports		English			2005
Census of Agriculture- 2002- Coconut Extent - Provincial Reports		English			2004
Outlook on Agriculture - Colombo District 2002		English			2007
Census of Agriculture -2002 Small Holding Sector All Island Tables		English			
Paddy Statistics - Seasonal Reports		Production			English and Sinhala
1. Highland Crops Statistics 2. Livestock Statistics Cost of Production of Tea, Rubber and Coconut	Production	English	Hard copies Website	Annual	M: 15 th Oct. Y: 15 th Jan 30 th Nov. 15 th March

Title of Publication	Domains/ Contents	Medium	Format	Periodicity/ Frequency	Release Calendar
Sri Lanka Food Balance Sheet	Food Availability	English	Booklet	Annual	15 th July
1. Bulletin of Selected Retail and Producer Prices 2. Weekly Retail Prices of Colombo City	Price	English	Website Bulletin	Annual	July Following week
External Trade Statistics	Trade	English	Hard copies	Annual	1 st quarter of the following year
1. Census Of Population 2. Quarterly Labor Force Survey	Agriculture Labor Force	English English	Hard copies CD, Website Booklet	Decennial Quarterly	3 months after the relevant quarter

M: Main Season S: Second Season

Additional Notes on Information Dissemination

Pricing Policy of Publications

As DCS is equipped with a printing press, almost all the publications are printed in this press. Prices of the publications are determined based on material cost and overhead charges plus whatever the ratio decided by government from time to time. Printed documents and CDs can be purchased from the Sales Counter of the Department of Census and Statistics.

Dissemination Procedures

There is no specified legal obligation other than the announcement of the cost of living index which is to be gazzeted on the first of each month while other announcements are made in accordance with the agreed calendar decided by the DCS. Reports are made available in hard copies, in electronic form and data are uploaded to the Departmental website as well as Regional Data Exchange System (RDES) website.

1.4 Dialogue with Data Users and Cooperation with International Organizations

When questionnaires are developed for each Survey/Census, the drafts of questionnaires and expected output are circulated among relevant Departments/Institutions for their comments and user- producer meetings are held prior to Census/Survey undertakings. Questionnaires are revised based on perceived new data requirements and practical problems faced in the field. Comments from main data users are also accommodated before finalizing the questionnaires. In this context, prior to undertaking the Census of Agriculture 2002, a user- producer workshop had been convened in Colombo in 2001 to review the content of Census questionnaires. The invitees also included representatives of International Organizations.

1.5 Strategic Framework

The mission of the DCS is to collect, compile and disseminate relevant, reliable and up-to- date statistical information required to plan a better future for the country and the people of Sri Lanka; to monitor the progress of development and other socio - economic activities; and to measure the impact of various governmental policies on the economy of the country and the living standards of the people.

The Annual work plan is prepared by the division well ahead and presented to the Ministry of Finance and Planning and physical progress is being reported quarterly. This work plan also copes with requirements based on National Accounts Division and other relevant key users in the field of agriculture. For instance, for Paddy (Rice) as staple food crop of the nation, survey to estimate the paddy production based on crop cuttings has been given high priority in the current survey program as many users like Ministry of Agriculture and Central Bank are frequently demanding for this information.

DCS has just completed its corporate plan for the next three years by spelling out the proposed activities.

DCS maintains an inventory of data collection activities and the summary of output integrated with DCS Performance Report is published annually to comply with the law.

The Head of Agriculture Division prepares budget according to the work program and forwards to the Head of the Department. The final total budget for DCS is prepared by a team of officers based on these estimates and is submitted to the Central Treasury/Ministry of Finance and Planning to be incorporated in the annual budget.

Chapter 2. MAJOR DOMAINS AND SELECTED INDICATORS OF AGRICULTURAL STATISTICS

2.1 List of Major Domains and Selected Statistics and Indicators

Domain	Statistics/Indicators
PRODUCTION <ul style="list-style-type: none"> • Crops • Livestock 	Area Average Yield Cost of Production Livestock Numbers by Species Livestock Production Number of Slaughtered
PRICES	Farmgate (producer) prices Market prices Import and Export Prices Monthly Consumer Price Index
TRADE	Export Import
FOOD CONSUMPTION	Food Balance Sheet

2.2 Metadata for Each of the Major Domains

2.2.1 Production

2.2.1.1 Concepts, Definitions and Classifications

CROPS

Crop Production and Area of Paddy

Seasons- In Sri Lanka, there are two major cultivation seasons associated with two monsoons and they are known as **Maha season** and **Yala Season**.

Maha Season- is the main season associated with North- east monsoons effective during September- April in the following year. When a particular crop is planted and harvested during this period, it is known to be a Maha Crop.

Yala season- is the secondary season which is associated with South- west monsoons effective during the period between May to September. When a particular crop is planted and harvested during this period, it is known to be a Yala Crop.

Mode of Irrigation

There are three types of irrigation related with paddy cultivation. They are (1). Major Irrigation schemes (2). Minor Irrigation schemes (3). Rainfed schemes.

Major Irrigation scheme- is defined to be an irrigated scheme of which water is fed to more than 200 acres, otherwise it is defined as a **Minor Irrigation scheme**.

Rainfed- is the cultivated extent which is purely dependent on rainwater in the absence of permanent water tank or reservoir.

Volume of Production- is reported in Metric Tons.

Average Yield per Acre or Hectare- is an indicator of productivity per area unit (2.471 acres = 1 hectare, while 1 hectare is equal to 10,000 square meters) estimated through Crop Cutting Survey. Average yield per acre is reported in bushels while per hectare is reported in kgs. Average yield is expressed in terms of

Paddy (grain with the husk form but not in Rice form)

Area Harvested- refers to the gross area of which the harvest is gathered excluding the area damaged due to different causes.

Gross Area- refers to the extent of which is reported by enumerators or respondents based on cultivated extent estimated by seed rates but not cadastrally surveyed.

Net Area- refers to the extent evolved by deducting the extent set apart for bunds and ridges.

Production for a year- is considered to be the sum of the production of Maha season and Yala season. For instance, the production of the year 2005 is to be the sum of 2004/05 Maha season and Yala season of 2005.

LIVESTOCK

Livestock numbers- refers to the reported number of animals of different species present on the day of 30th June each year and kept for all purposes.

Milking at present- refers to the female cows reported on the day of enumeration as being used for milk production.

Milking not at present- refers to female dry cows which have calves but not used for milk production on the day of enumeration.

Milk Production- relates to total production of whole fresh milk collected and measured in terms of liters.

Slaughtered Numbers- are only restricted to numbers reported in licensed slaughter houses of Local Government Authorities but the numbers illicitly slaughtered are not included as there is no way of estimating them.

2.2.1.2 Coverage, Availability, Data Sources and Responsible Agencies

Statistics/ Indicators	Coverage	Availability	Data Source	Responsible Agencies
Crops				
Production and Area Statistics				
Crop Production: Quantity	National/ Sub-National	2005/2006	Crop Cutting Survey	DCS
Yield Per Acre/Hectare	National/ Sub-National	2005/2006	Crop Cutting Survey	DCS
Sown/Harvested Area	National/ Sub-National	2005/2006	Census	DCS
Livestock				
Livestock Production: Quantity	National/ Sub-National	2006	Estimates	DCS
Livestock Production: Value	National	2006	Estimates	DCS

2.2.1.3 Data Processing, Estimation and Revision Methodology

CROPS

Average yield per acre/hectare of paddy is estimated at the headquarters in Colombo based on the crop cutting sample data received from the districts using a DBASE program and Statistical Package for Social Sciences (SPSS) software developed by the Agriculture and Environment Statistics Division of DCS through micro computers. Prior to final processing, manual coding, verification of data entries and checking outliers are performed.

Sown and harvested areas are estimated based on hundred percent enumeration of paddy growing parcels during the particular season. Area of each and every parcel of paddy is recorded according to irrigation schemes in a prescribed form known as P1 by Primary Reporters. These disaggregated data at different levels are finally aggregated to district and national levels manually.

Production estimate is a product of the average yield and the harvested area.

LIVESTOCK

Livestock Numbers

Livestock data collected annually by DCS under current agricultural statistics program is mainly focused on livestock numbers by species, livestock products viz.

milk production and egg production. Present system of collection of these data other than slaughter is based on subjective approach where the numbers are being reported by primary reporters according to their personal judgment and are somewhat guess-estimates. Livestock numbers for respective year refers to estimates on 30th June of each year.

Livestock Products

Production of milk is estimated annually by multiplying the number of milking animals reported on the day of enumeration by the estimated average yield of milk per cow. Estimating the number of eggs is on the basis of similar principle.

Slaughter Statistics

Number of slaughtering by species is collected from slaughter houses registered at Local Government Bodies though the Branch Offices located in the District Secretariat. However, slaughtering which takes place without authority is not covered in these statistics of which the volume is known to be substantial.

2.2.1.4 Other Reference Information

When crop cuttings are done in the field in addition to sample fields selected for crop cuttings, an additional set of sample fields are selected to collect ancillary information related to the paddy crop viz. usage inputs, system of tenure, variety of seed, etc. Along with the final estimates on production and average yield, the estimated extent related to the above characters is being disseminated.

2.2.2 Prices

2.2.2.1 Concepts, Definitions and Classifications

Farmgate (Producer) prices- relates to the prices received by farmers at the farm and reported in the currency of Rupees and Cents.

2.2.2.2 Coverage, Availability and Responsible Agencies

Statistics/ Indicators	Coverage	Availability	Responsible Agency
Producer Prices	National/ Sub-National	2006	DCS
Retail Market Prices	National/ Sub-National	Up-to-date	DCS
Consumer Price Index	Colombo City	Up-to-date	DCS

2.2.2.3 Data Processing, Estimation and Revision Methodology

Farmgate Prices

Farmgate prices of important commodities are collected monthly by the statistical staff of DCS attached to District Secretariats. In each Divisional Secretariat Division, three representative producing centers are selected to collect these prices. The Statistical Officer visits these producing centers and obtains producers' selling prices of the respective agricultural commodities at the farm-gate level.

Market Prices

Open market retail prices of food and miscellaneous items representing major towns in all districts are also collected on weekly, monthly and quarterly basis through the field staff of DCS and disseminated afterwards.

Monthly Consumer Price Index

The Colombo Consumer Price Index popularly known as CCPI is the country's official cost of living index which is used to adjust the cost of living component of salaries and wages of both government and private sector employees. This is published in the Government Gazette to abide by the law on the first day of each month notifying the index computed for the preceding month. This has been initiated by DCS in 1950s and the index is a measure to record the changes in the average level of retail prices paid by consumers for goods and services in Colombo city.

The weight used in the index is based on the average expenditure of a sample of 455 working class households which as ascertained in the Colombo Family Budget Survey 1949/50, and revalued at prices of 1952. Five major components appeared in the index and their respective weights are Food (62%), Fuel and light (4%), House rent (6%), Clothing (9%) and Miscellaneous (19%).

Prices for items in the basket are collected weekly from a number of outlets including cooperatives and other statutory bodies in markets located in Colombo city limits. The officials of DCS record the prices of respective food items by actually purchasing of them in order to ensure the prices to be more realistic. These items that are test purchased by officers are closely scrutinized and weighted at Price division of DCS prior to the computation of the index.

In view of the preparing of revised index, an index based on the income and expenditure survey 1995/96 conducted by DCS has been constructed on a trial basis.

2.2.2.4 Other Reference Information

Statistical Reports

Bulletin of Selected Retail Prices 2006- (Annual Publication)
 Weekly Retail Prices (Colombo City) 2006- (Annual Publication)

2.2.3 Trade

2.2.3.1 Concepts, Definitions and Classifications

Export and Import data classified and compiled in accordance with **HS** coding system.

2.2.3.2 Coverage, Availability and Responsible Agencies

Statistics/ Indicators	Coverage	Availability	Responsible Agency
Agricultural Export: Quantity	National	2006	Statistics Branch of the Customs Department
Agricultural Export: Value	National	2006	Statistics Branch of the Customs Department
Agricultural Import: Quantity	National	2006	Statistics Branch of the Customs Department
Agricultural Import: Value	National	2006	Statistics Branch of the Customs Department
Agricultural Import: Prices	National	2006	Statistics Branch of the Customs Department

2.2.4 Food Consumption/Food Availability

2.2.4.1 Concepts, Definitions and Classifications

Production- Production of the rice and all highland crops with the exception of vegetables and fruits are extracted from the estimates prepared by the Department of Census and Statistics (DCS). Paddy production is estimated seasonally by using a complete enumeration of paddy lands with the results of the crop cutting surveys conducted biannually. Production of the highland crops are based on the estimates worked out using the district level area statistics collected by Primary Reporters and the average yields provided by the Agriculture Department. The estimated consumption of vegetables and fruits are computed by using the per capita consumption data available from the Income and Expenditure Surveys.

Change in Stocks- This is the difference between the end of the year and the beginning of the year stocks. It should be noted that the stock position considered in the Food Balance Sheet are those from the Government Institutions only, while the change in stock in the wholesale and retail trade in the private sector are assumed to be negligible. Data on stocks of wheat flour, rice, sugar, other pulses (Dhal) and

tinned fish are received from the authorities. Data on stocks of sugar is received from Local Sugar Companies and relevant institutions where sugar is used for their products as a raw material. Stocks of milk powder are obtained from the Milk Industries of Lanka Co. Ltd. and that of desiccated coconut from Coconut Development Authority.

Gross Exports and Imports- These account for the foreign trade of food items listed in the sheet for the particular year. The imports of rice, wheat flour, and wheat are provided by relevant institutions. Imports of the wheat in the form of grain were also taken into consideration and it was converted into flour by using the extraction rate of 74%. All the other entries appearing under this column are extracted from the External Trade Statistics (Custom Returns).

Available Supply- This indicates the quantities of food supplies available before disposal to non- food and food uses. The available supply is computed by adding the net decrease in stock and the net imports to production figure of each food item.

Animal Feed- This shows the quantities of food used as animal feed during the year. The quantities of rice, wheat and maize which are used for animal feed, are supplied by the Food Commissioner's Department and Ceylon Grain Elevators Ltd.

Seed- The values appearing here are estimates worked out using the seed rates and the area under cultivation of each commodity for the year. The seed rates of paddy and all the highland crops, which are in annexure II are provided by the Department of Agriculture while statistics on cultivated area, are estimated by the Agriculture and Environment Statistics Division of DCS.

Manufacture- This shows the quantities of food used for the manufacture of non-food products like soap, paints etc. as well as the quantities used for food products where the appearance of the commodity will change. A change of nutrients will also take place during the transformation, e.g. jam, beer etc. Data for fish, milk and coconut products were received from the Ministry of Fisheries, Milk Industries Co. Ltd. and Coconut Development Authority respectively.

Waste- It accounts for the loss of food from the initial stage that is, from the farm up to the stage where it reaches the consumer. Waste in processing, distribution and storage is only taken into consideration here. Losses incurred inside the house mostly in the case of perishable foods and the quantities wasted after cooking which is commonly known as plate waste is not included.

Food (Gross)- This refers to the balance of the available supply after the quantities for animal feed, seed, manufacture and waste has been deducted.

Extraction Rates- The extraction rate mainly applies to cereals and is used to convert the grains to flour or transform to a more palatable form by milling. These rates are supplied by the Ministry of Agriculture.

Food (Net)- These figures represent the actual quantities of food directly available for human consumption.

Per Capita Availability- This represents the average per capita availability of food in kilograms per year and grams per day. Quantities of food actually consumed may be less than these amounts.

Per Capita Supply of Nutrients- The daily per capita availability of calories, protein grams and fat grams is derived using the nutrient conversion tables supplied by the Medical Research Institute which is given in annexure III.

2.2.4.2 Coverage, Availability and Responsible Agencies

Statistics/ Indicators	Coverage	Availability	Responsible Agency
Quantity of Food	National	2005	DCS
Calories	National	2005	DCS
Proteins	National	2005	DCS
Fats	National	2005	DCS

2.2.4.3 Data Processing, Estimation and Revision Methodology

The Agriculture and Environment Statistics Division of DCS is responsible for preparing the Annual Food Balance Sheet in accordance with the guidelines of FAO. Relevant statistics for the previous year are obtained at the beginning of the following year from different sources as mentioned above and compiled and disseminated.

2.2.4.4 Other Reference Information

Food Balance Sheet 2001-2005 (Annual Publication)

Chapter 3. MAJOR DATA SOURCES FOR AGRICULTURAL STATISTICS

3.1 List of Major Agricultural Censuses, Surveys and Registers

Censuses

1. Census of Agriculture
2. Census of Population and Housing

Surveys

1. Bi-Annual Crop Cutting Survey on Paddy
2. Rapid Appraisal Surveys- Sample Survey on Potatoes and Big Onion
3. Subsidiary Food Crops and Other Highland Crop Statistics
4. Cost of Production of Major Plantation Crops (COP)

Registers

1. Cost of Cultivation of Seasonal Crops
2. Trade Statistics
3. Extent and Production of Major Plantation Crops

3.2 Metadata for Each of the Major Censuses

3.2.1 Census of Agriculture 2002

3.2.1.1 Overview

Historical Background

Unlike the Census of Population, where there is almost a tradition of decennial censuses since 1871 there has been no regularity of the Census of Agriculture in Sri Lanka. A Census of Production, virtually agricultural production was taken in 1921 followed by partial censuses in 1924 and 1929. At these censuses, particulars of crop areas, livestock numbers and production were recorded at village level.

In more recent times, there were Censuses of Agriculture in 1946, 1952, 1962 and 1973. At the Census of 1946, a parcel- wise enumeration was undertaken in all blocks of land throughout the country from where it existed at that time or it could be any kind of cultivation had previously existed there. This was the first comprehensive Census of Agriculture taken in Sri Lanka in recent times.

A deviation from this pattern of parcel- wise enumeration was first attempted at the Census of 1952 but difficulties in completely enumerating the villages selected in the sample restricted the use of the census data on small holdings. The 1962 Census enumerated all holdings not less than 50 acres (20.2 Hectares) on a complete basis and a sample of 10 percent in the case of holdings less than 50 acres. In 1973, the larger holdings and all estates were completely enumerated for detailed information on the various characteristics and operations, while a sample of small holdings were scientifically selected and enumerated.

The Census of Agriculture 1982, the latest in the series, about 1.8 million holdings both large and small was covered on a complete enumeration basis. The Census of Agriculture due in 1992 was not conducted due to the disturbed conditions on the ground in certain parts of the country and the Census in 2002 was conducted after a lapse of 20 years.

Scope

The items that were included in the questionnaires had been thoroughly discussed with users in a user- producer seminar held in Colombo in the latter part of 2001. The pilot census was carried out in November/December 2001. The questionnaire was mostly the same as that was used in the 1982 Census of Agriculture with few modifications.

Following are the main subjects of information collected through the Census of Agriculture- 2002:

1. Agricultural Operators
2. Agricultural Holding
3. Extent under different crops and land utilization
4. Livestock
5. Agricultural machinery and equipment

Agricultural Operator

An agricultural operator is the person responsible for operating the agricultural land and /or livestock. He/She may carry out the agricultural operations by himself/herself or with the assistance of others or simply direct day-to-day operations. Here, the operator may be one of the following: a) cultivates the land and/or tends the livestock himself; b) he/she may do so with the assistance of hired labor or any other persons or; c) he/she may simply direct operations by taking decisions only.

It is important to note that the operator need not necessarily be the owner of the land or livestock and also that mere ownership does not entitle a person to be considered as an operator. This means that a person may attend to all the work needed to cultivate a land or tend livestock but will not be considered the operator, if there is someone else directing the day to day work on the holding. It also means that a person may supervise the work in a holding appearing for all purposes to be in

charge of the operations of the holding, but if there is someone else who is giving day to day directions, he/she does not become the operator.

With respect to livestock, any person who is actually responsible for the management of livestock in the same way that a land operator is responsible for his holding will be considered as the operator. The livestock may be owned, obtained on "Ande" or leased or any other form of arrangement. While most livestock operators will also be land operators, there would be cases of livestock operators who are not land operators and therefore they may have no land holding. The term agricultural operator includes both land operator as well as purely livestock or poultry operator.

While most of the operators have only one holding, there could be cases of an operator having more than one holding.

Agricultural Holding

An agricultural holding consists of all land and/or livestock used wholly or partly for agricultural production and is operated under one operational status and situated within one Divisional Secretariat. (D.S.) Division subject to the following conditions:

1. One holding may consist of one or more parcels.
2. Does not matter whether operator owns the land or not.
3. Does not matter whether the land is operated legally or not.
4. Holding may comprise only crops, only livestock or crops and livestock.
5. Does not matter whether the land is very marginal or big in size.
6. Holding may comprise only paddy, only highlands or paddy and highlands.

However, any land situated outside the D.S. division where the operator resides should be considered as a separate agricultural holding taking into account the above conditions.

Home Garden

A piece of land which has a dwelling house and having some form of cultivation and if the total area of that piece of land is twenty or less than twenty perches (0.05 hectares) is defined to be a Home Garden. It may also be a piece of land which has some form of cultivation and if the total area of which is more than twenty perches, it is also considered as home garden, if the following two conditions are satisfied:

1. It has a dwelling house
2. The produce of the cultivated land is largely for home consumption.

"Having some form of cultivation," means any cultivation for agriculture production. This will include even one coconut palm or couple of chilly plants and it is treated as Home Garden, if the above conditions are satisfied.

Coverage

The Census covered all agricultural holdings as defined in the Census in all 25 districts in the island other than a marginal urban area in the Colombo district which is predominantly used for commercial and residential purposes.

Agriculture in Sri Lanka is carried out in two distinct sectors such as (i) estate or the plantation sector and (ii) the peasant or the small holding sector. Two methods of data collection were designed which corresponded to these sectors for facilitating the operations of the Census.

1. Estate Sector: An agricultural holding of 20 acres (8.09 Hectares) or more in extent and under the same unit of management is considered as an estate. In the instances where different parcels of the holding may add up to 20 acres or more, then it is not considered as an estate. Estate should have at least one parcel of which the extent should be 20 or more in acres. Similarly, the holdings such as purely paddy lands or chena lands of 20 acres or more are not considered as estates.

In respect of the estate sector, the information was collected through mail questionnaires by sending the specific questionnaire to each and every operator/superintendent according to the inventory of estates prepared prior to Census proper.

2. Small Holding Sector: All other holdings which do not fall under the category of estates were defined as small holdings. Basically, these are the holdings below 20 acres in extent.

The trained Enumerators have visited every census unit in order of the list frame (F1) that was prepared at the Census of Population 2001 namely, housing unit, institution, collective living quarters, and non-housing unit in the country and screened out the agricultural operators through a schedule known as AC.1. They have been instructed to have personal interviews with operators and to collect the information.

In this operation the small holdings were further subdivided into two (2) categories as follows:

- Holdings reporting extent less than or equal to 40 perches (0.10 hectare) of land having agricultural produce mainly for home consumption. The information pertaining to this group were restricted into the listing sheet known as "AC.1" and they could be considered as either "Marginal holdings" or "Inactive holdings" on the agricultural development point of view.

- Holdings reporting extent more than 40 perches (0.10 hectare) of land or producing agricultural output mainly for sale irrespective of extent of land. The

detailed type of information i.e. explained in the section (d) was collected from these holdings through the schedule known as “AC. 2”.

3.2.1.2 Census Design

Census: Census of Agriculture 2002

Sampling Frame

The list frame prepared at the Census of Population and Housing 2001 was updated in the Census of Agriculture in order to screen agricultural operators/holdings.

Sampling Design/Statistical Unit/Selection Procedure

All holdings were enumerated.

3.2.1.3 Conduct, Operations, Data Quality Control

The DCS has designed a program to decentralize the data entry and tabulation program related to the processing of enumerators’ summaries to district offices of which almost all of them have microcomputers. The relevant software was prepared and the district staff has been given training. This procedure was completed by mid of 2003 and the relevant data were made available in hard copies and through electronic media including access to the Departmental Website.

The main problem faced by DCS was data processing of nearly 1.8 million main schedules. This form was designed with a view to use in the means of optical reader (scanner). DCS was in possession of a Fujitsu 4097D scanner with single user Form processing software. The scanner’s duty cycle is rated 5000 pages per day. Since this machine had limited capacity, measures have been taken to capture data through outsource scanning system and the job was completed within 6 months.

3.2.1.4 Statistical Report

Census of Agriculture- 2002 (Small Holding Sector) Release No .1,2,3

Census of Agriculture- 2002 (Estate Sector Report

Census of Agriculture- 2002 (Small Holding Sector)- District-wise Preliminary Reports

Census of Agriculture- 2002- Coconut Extent- Provincial Reports

Outlook on Agriculture- Colombo District 2002

Census of Agriculture- 2002 Small Holding Sector All Island Tables

Census of Agriculture- 2002 Small Holding Sector - District-wise detail Reports

3.2.2 Census of Population and Housing 2001

3.2.2.1 Overview

Historical Background

Sri Lanka has a long history of census taking. Prior to 1871, estimates of population had been made from time to time on the basis of counts provided by village Headmen. The first scientific census was conducted in 1871. Since then, censuses were conducted usually in every 10 years with certain exceptions. The 1941 census was conducted only in 1946 due to the world war. Although, there was the intention to hold a census in 1951, it was postponed to March 1953 owing to the shortage of paper at that time. The next census was taken in 1963 and thereafter, two censuses were held, one in 1971 and the other in 1981. Thus, the tradition of taking a census in the year ending in 1 which had been maintained until 1931 had been reverted in 1971. The census which was scheduled to be conducted in 1991 was not implemented due to the disturbances that prevailed in Northern and Eastern parts of the country. The last Census of Population and Housing was conducted on 17th July 2001

Scope and Coverage

In 2001 Census, only two types of questionnaires were used. One questionnaire was for population characteristics and housing conditions and the other was for infirmity.

Population and Housing Questionnaire - This questionnaire contained 24 items from individuals pertaining to demographic characteristics, migration patterns, literacy, type of occupation and fertility. In addition, 9 items on housing characteristics and 6 items on household information were also collected through this questionnaire.

Infirmity Questionnaire - This contained information pertaining to 6 types of disabilities (seeing, hearing/speaking, disabilities in legs and other physical disabilities), causes of such disabilities and age at which such disability occurred.

3.2.2.2 Census Design

The census was carried out in 4 stages:

1. Mapping Operation
2. Listing Operation
3. Conducting the Preliminary Census
4. Conducting the Final Census

Sampling Frame

Mapping Operation

Maps were drawn separately for urban and rural sectors demarcating the boundaries of administrative sub-divisions. Then, within such sub-divisions, census blocks which are the basic units of enumeration of the census were demarcated and boundaries were drawn in the map. The demarcation of census blocks was done in a way that each census block to include approximately 60 housing units in rural areas and about 80 housing units in urban area. This was done to facilitate the completion of the census enumeration of the census block assigned to the enumerator within about 4 to 6 hours on the day of the final census.

Sampling Design/Statistical Unit/Selection Procedure

Listing Operation

All census units were listed based on the maps during this operation. Pre-listing officers were assigned to small administrative division and they had listed all census units in their areas on a specially designed form. The listed units were serially numbered and this number, known as the “Census Unit Number”, was written on a census label and affixed at a prominent place of the unit. This list provided the basic frame for the censuses and subsequent surveys. This operation was carried out in about 4 to 6 months before the preliminary census.

Preliminary Census

During the preliminary census, information were collected and a census schedule was filled for each person living within housing units and collective living quarters. About 100,000 enumerators were appointed and trained to perform this task at the last census. This operation was conducted just prior to the Final census.

Final Census

Final Census was conducted on the day of the census between 6 p.m and 12 midnight after about a week from the preliminary census. On this day, the enumerators visited all units and verified the entries made in the census questionnaires filled up during the preliminary census and obtained a total count of the Population. Special arrangements were also made to enumerate people staying outdoors on the final census night. For this purpose, outdoor enumerators have been appointed in all public places, like bus stands, railway stations etc.

Geographical Scope

The final Census enumeration was carried out completely only in 18 districts out of 25 administrative districts in the island. The completed districts include all the 17

administrative in Western, Central southern, Central, Uva and Sabaragamuwa Provinces and Ampara district in the Eastern Province. Due to unsettled conditions on the ground in Northern and Eastern Provinces, certain areas were enumerated completely.

3.2.2.3 Conduct, Operations, Data Quality Control

Processing of Census Data

Data processing involved two major phases: manual editing and coding and the other is computer processing. Prior to 1946, the census data were tabulated manually. For the first time, 1946 census data were processed using conventional machines where the data codes were punched in cards and the tables were obtained using sorters and tabulating machines. This process of using conventional machines was continued to process the 1953 and 1963 census data. It was in respect of the 1971 census that an electronic computer was used for the first time to process census data. Data pertaining to summaries of Enumerators were processed through OCR (scanning) technology while detailed questionnaires were through data entries in 2001 Census.

3.2.2.4 Statistical Report

Printed publications continue to be the main media of dissemination of census results. In addition to the hard copies in the dissemination of Census results, electronic media like CDs and website have been used.

Census of Population and Housing 2001 -Preliminary Release

Census of Population and Housing 2001 - District Reports

Analysis of Disable Statistics Report

Census of Population and Housing 2001- Preliminary Evaluation of Age and Sex data

3.3 Metadata for Each of the Major Surveys

3.3.1 Bi-Annual Crop Cutting Survey on Paddy

3.3.1.1 Overview

Paddy (rice) statistics

The present system of collecting paddy statistics has three main aspects:

1. Paddy extent
2. Average yield
3. Production

Historical Background

Paddy Extent

The collection of statistics on the paddy extent namely, Asweddumized (land prepared for cultivation), sown, and harvested on a complete enumeration basis was initiated in 1951 with the assistance of FAO. This method of data collection has since been continued each season with the active cooperation of the “Agricultural Research and Production Assistants/Grama Niladari” (GNN) who are acting as primary reporters for this exercise. Although collection of agricultural statistics to DCS is one of the functions of these reporters, it is performed as an honorary work and these officers are under the administration of the Ministry of Agriculture/Home Affairs.

Average Yield of Paddy

An island-wide scheme of estimating the average yield of paddy in Sri Lanka at district level by means of a sample survey, which is popularly known as Crop Cutting Survey was initiated with the assistance of FAO in 1951 and is continued with modifications to suit the changing conditions.

Paddy Production

Estimate of paddy production is obtained each season as a product of the acreage harvested and the average yield computed on the basis of crop cutting survey.

Scope

At present, a sample of 3,000 villages for the main season (Maha) and 2,000 villages for the second season (Yala) are selected to carry out experiments.

Objective

To estimate the average yield and mode of irrigation and to estimate the paddy production by district.

3.3.1.2 Survey Design

Survey: Bi-annual Crop Cutting Survey on Paddy

Sampling Design/Statistical Unit/Selection Procedure

Statistics on paddy yield are compiled through the sample survey conducted in each season. The sampling design adopted for this survey is multi-stage stratified design where the stratification is based on mode of irrigation namely, major irrigation schemes, minor irrigation schemes, and rainfed. In the first stage, from each stratum, a random sample of villages is selected and number of samples are

decided based on sown extent. In the second stage, ten paddy growing parcels are selected at random of which first two parcels are defined for crop cuttings survey and next two parcels are defined to collect ancillary information like seed variety, system of tenure, method of preparation of land, use of inputs, etc. Based on these sample parcels, the extent under different characteristics is estimated. In the third stage, a tract (Liyadda) is selected at random within the selected paddy parcel to facilitate the location of standard plot size of 5 meter x 5 meters (16 ½ ft. x 16 ½ ft.). Then, the crop in the experimental plot is harvested, grain threshed, cleaned and measured using standard measure sets.

Geographical Scope

About 3,000 villages or 6,000 experiments for main season (Maha Season) and 2,000 villages 4,000 experiments for second season (Yala season) are conducted annually to estimate the average yield and mode of irrigation and to estimate the paddy production by district. The error statistics are calculated using microcomputers.

3.3.1.3 Conduct, Operations, Data Quality Control

The experiments in the sample fields are conducted by well-trained field officers attached to different concerned agricultural government departments while 20 percent of them are supervised by higher officers. Spot-checking is a means of quality control.

3.3.1.4 Statistical Report

Results are published just after concluding the crop-cutting survey for a particular season entitled “Paddy Statistics”

3.3.2 Rapid Appraisal Surveys- Sample Survey on Potatoes and Big Onion

3.3.2.1 Overview

Historical Background

It is noted that these estimates have some limitations, especially the data available at the end of the season. But the planners and policy makers do prefer to have the production forecasts well in time. With the recognition of these needs, the DCS has initiated a program to conduct few reconnaissance surveys by selecting two vital food crops, namely, Potatoes and Big-onion which are being imported from time to time because domestic production is insufficient to cater the local demand. On the other hand, imports of these items at the time of local harvest is taken place has become a burning issue among politicians and growers.

In order to cater to the needs of policy-makers by making available the expected production over the months, DCS has designed a survey program and started sample surveys on Potatoes and Big-onion since 1997 and included in the current statistical activities. Under this exercise, with the help of field staff of DCS, data collection procedure was formed in a systematic way and to produce the data prior to the harvest start. The response from the users for these data had been very impressive. However, it was noted that the similar procedure cannot be extended to all the crops because of limited financial and personnel resources.

Purpose

To address the needs of policy-makers by making available the expected production over the months.

3.3.3 Subsidiary Food Crops and Other Highland Crop Statistics

3.3.3.1 Conduct, Operations, Data Quality Control

Extent and production statistics of about 60 different crops are collected by the DCS with the help of primary reporters who report the data pertaining to their jurisdictions covering the production seasons. These data are compiled based on primary reporters' subjective judgments according to the guidelines and training imparted by the DCS from time to time. In the light of the Census of Highland Crops & Livestock, which a parcel-wise enumeration carried out in 1992/93 and keeping these as baseline information, the primary reporters have been asked to report the changes on the crop extent over the cultivation seasons until the 2002. By conducting the Census of Agriculture and Livestock 2002 has formed the basis for reporting updated information. Then, production is estimated on the basis of average yield estimates prepared in consultation with Agricultural Instructors. Use of baseline data of 2002 from Census of Agriculture that was scheduled in 2002, was one of the steps taken for the improvement of highland crop statistics during the recent past.

3.3.4 Cost of Production of Major Plantation Crops (COP)

3.3.4.1 Conduct, Operations, Data Quality Control

DCS has been engaged in the computation of COP pertaining to tea, rubber and coconut on annual basis. This system is in continuous operation with modifications to suit the changes over time. Data are collected through mailed questionnaires from the large- scale holdings (estates) with the active cooperation of respective authorities. Low response to the mail questionnaires is one the major problems that have been experienced in Sri Lanka in the estimating of COP.

3.4 Metadata for Each of the Major Administrative Registers

Although DCS is responsible for data collection as per power vested by ordinances, there are a few agencies that collect information in an ad-hoc basis on various aspects with a limited scope in order to evaluate or monitor the activities undertaken by them like monetary policies, extension programs, etc. These include the following:

1. Statistics Branch of the Customs Department
2. Tea Commissioners Division of the Tea Board
3. Rubber Control Department
4. Department of Agriculture

3.4.1 Cost of Cultivation of Seasonal Crops

3.4.1.1 Responsible Agency: Department of Agriculture

Background

The Department of Agriculture has conducted a study on Cost of Cultivation on Seasonal Crops covering 12 crops. They initiated this study two decades back and had been maintaining a long series of data. The crops covered in this study were paddy, chili, maize, greengram, blackgram, groundnut, kurakkan (millet), red onion, potato, pole beans, tomato and cabbage. Major Districts where the particular crop was grown was covered in this survey and all costs and returns were being computed for an acre of cultivation. The cost items were divided into three main components namely, labor, power and materials. In addition to the cost of cultivation, indicators such as profit and returns on man-day were also computed. A booklet entitled "Cost of Cultivation of Agricultural Crops" is being published for each season.

3.4.1.2 Description of Contained Information

Coverage

The crops covered in this study are paddy, chili, maize, greengram, blackgram, groundnut, kurakkan (millet), red onion, potato, pole beans, tomato and cabbage.

3.4.2 Trade Statistics

3.4.2.1 Responsible Agency: Statistics Branch of the Customs Department

Background

Import and export data are compiled in a systematic manner by the Statistics Branch of the Customs Department of which the statistical personnel have been provided by DCS. Inventory of all items prices, quantities, country of origin, destination, etc., and values are being recorded daily basis and the aggregates are available for users.

3.4.2.2 Description of Contained Information

Coverage

Import and Export Prices

In the trade statistics compiled by the Statistics branch of the Department of Customs, country of origin, quantity of the consignment and the value of the goods are recorded by months. As such, the prices of each and every product could be easily obtained.

3.4.3 Extent and Production of Major Plantation Crops

3.4.3.1 Responsible Agencies

Tea: Tea Commissioners Division of the Sri Lanka Tea Board

Rubber: Rubber Control Department

Background

Tea

Under the Tea Control Act, the factories are bound to report the production figures monthly to the Tea Commissioners Division of the Sri Lanka Tea Board. They are also required to register the tea acreage with them. Based on the updating of records, the annual acreage is determined. However, the large-scale enterprises can cover through the above means systematically. But it is not possible to trust small-scale owners in view of completeness and proper response through the above procedure for updating.

Tea Small Holding Census 2005

Due to the incompleteness in the estimating of extent under small-holding in the current statistics, in collaboration with the Tea Small Holding Authority and Ministry of Plantation Industries, an island-wide census on tea small-holdings was undertaken during the year 2005 and the extent by sub-national levels as well as more detailed information required by planners pertaining to different aspects were

collected. These data were disseminated to the users just after three months of concluding the Census.

Rubber

A similar procedure is being adopted to estimate the extent under rubber as the tea by the Rubber Control Department. While Rubber production is computed on the basis of monthly exports, local consumption and changing stocks.

3.4.3.2 Description of Contained Information

Coverage

The crops covered in this study are paddy, chili, maize, greengram, blackgram, groundnut, kurakkan (millet), red onion, potato, pole beans, tomato and cabbage.